



Terms and Conditions of Use of Digitised Theses from Trinity College Library Dublin

Copyright statement

All material supplied by Trinity College Library is protected by copyright (under the Copyright and Related Rights Act, 2000 as amended) and other relevant Intellectual Property Rights. By accessing and using a Digitised Thesis from Trinity College Library you acknowledge that all Intellectual Property Rights in any Works supplied are the sole and exclusive property of the copyright and/or other IPR holder. Specific copyright holders may not be explicitly identified. Use of materials from other sources within a thesis should not be construed as a claim over them.

A non-exclusive, non-transferable licence is hereby granted to those using or reproducing, in whole or in part, the material for valid purposes, providing the copyright owners are acknowledged using the normal conventions. Where specific permission to use material is required, this is identified and such permission must be sought from the copyright holder or agency cited.

Liability statement

By using a Digitised Thesis, I accept that Trinity College Dublin bears no legal responsibility for the accuracy, legality or comprehensiveness of materials contained within the thesis, and that Trinity College Dublin accepts no liability for indirect, consequential, or incidental, damages or losses arising from use of the thesis for whatever reason. Information located in a thesis may be subject to specific use constraints, details of which may not be explicitly described. It is the responsibility of potential and actual users to be aware of such constraints and to abide by them. By making use of material from a digitised thesis, you accept these copyright and disclaimer provisions. Where it is brought to the attention of Trinity College Library that there may be a breach of copyright or other restraint, it is the policy to withdraw or take down access to a thesis while the issue is being resolved.

Access Agreement

By using a Digitised Thesis from Trinity College Library you are bound by the following Terms & Conditions. Please read them carefully.

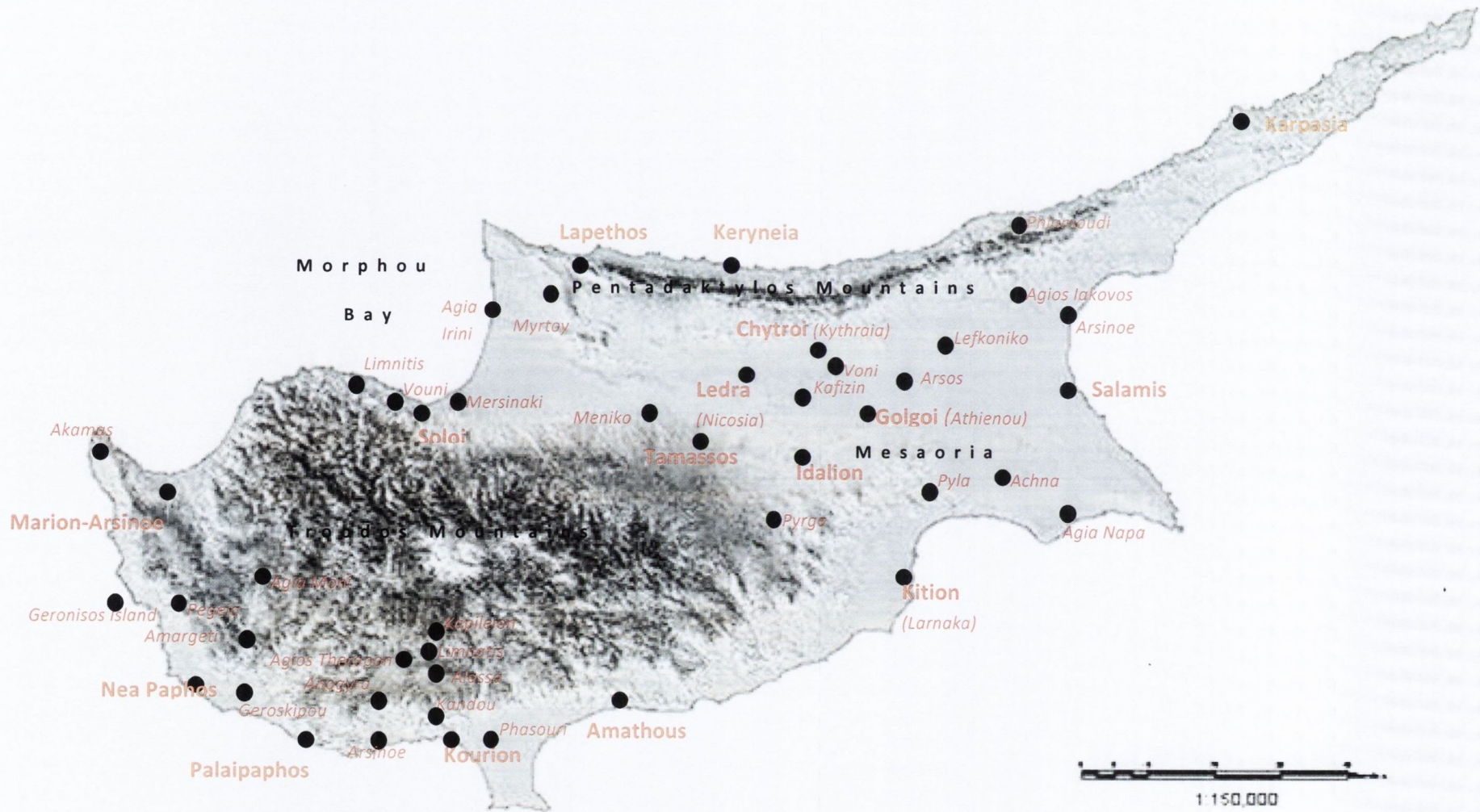
I have read and I understand the following statement: All material supplied via a Digitised Thesis from Trinity College Library is protected by copyright and other intellectual property rights, and duplication or sale of all or part of any of a thesis is not permitted, except that material may be duplicated by you for your research use or for educational purposes in electronic or print form providing the copyright owners are acknowledged using the normal conventions. You must obtain permission for any other use. Electronic or print copies may not be offered, whether for sale or otherwise to anyone. This copy has been supplied on the understanding that it is copyright material and that no quotation from the thesis may be published without proper acknowledgement.

**Cyprus, from *Basileis* to *Strategos*:
Social Power and the
Archaeology of Religion**

Volume 2

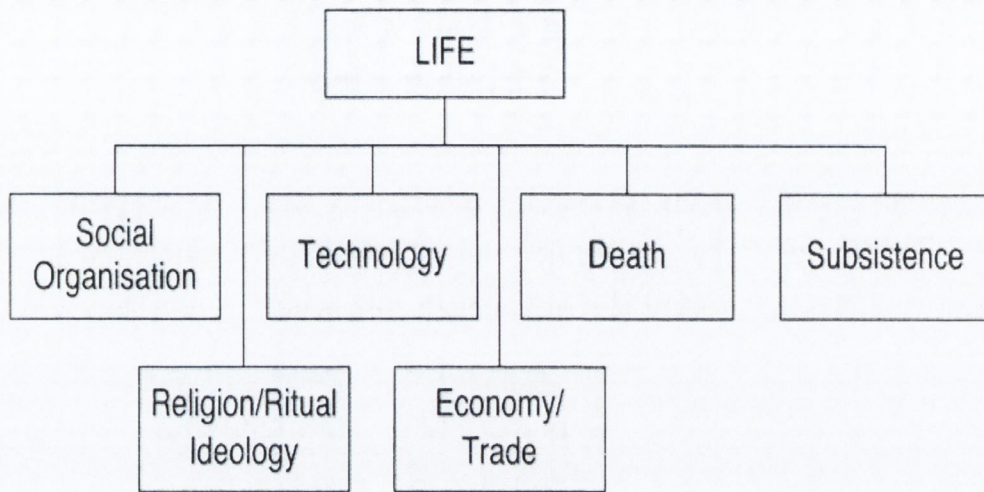
Giorgos Papantoniou

A Thesis Presented to the University of Dublin, Trinity
College for the Degree of Doctor of Philosophy
2008

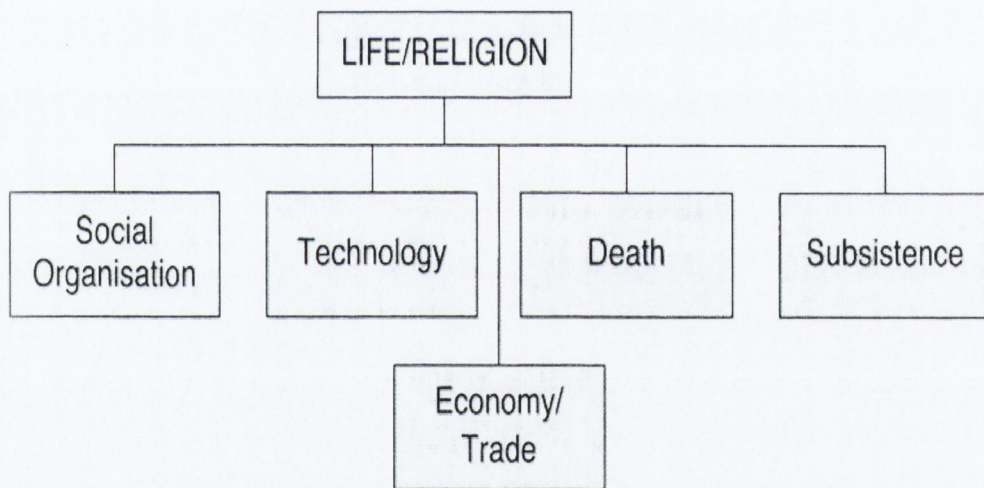


Map of Cyprus with the sites mentioned in the text

FIGURES



A 'usual' view of the archaeological place of religion
(categories chosen are not meant to be exhaustive).



A better view of the archaeology of religion?

Fig. 1: Two views on the place of religion (Insoll 2004a, 23, fig. 2).

CYPRUS IN THE CYPRO-ARCHAIC I PERIOD

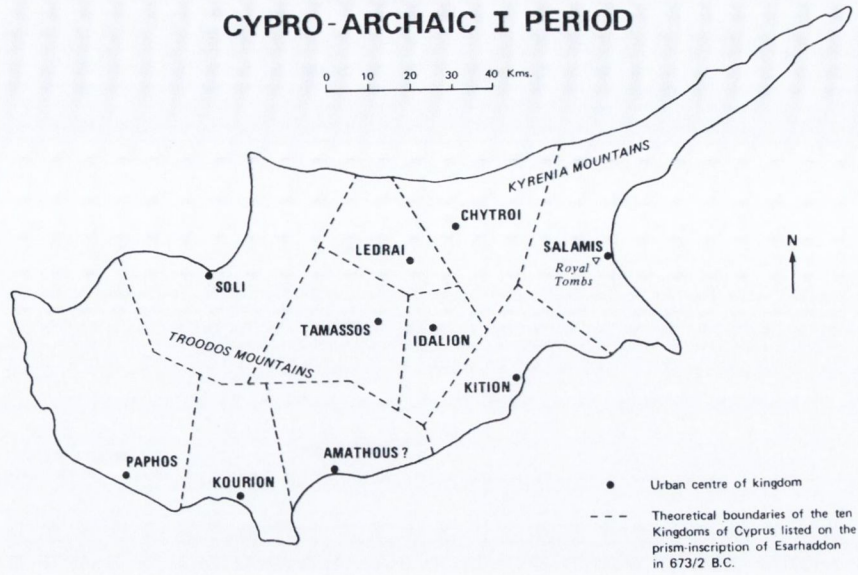


Fig. 3: 'Theoretical boundaries' of the city-kingdoms mentioned on the prism inscription of Esarhaddon of 673/2 BC (Rupp 1987, 166, map 4).

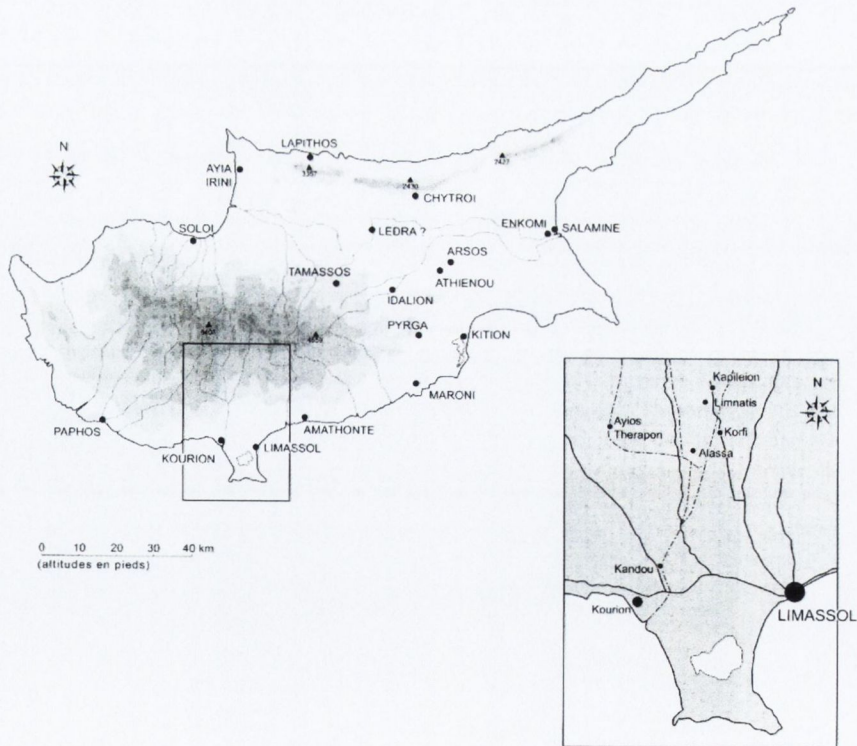


Fig. 4: Kouris Valley (Fourrier 2002, 146, fig. 2).

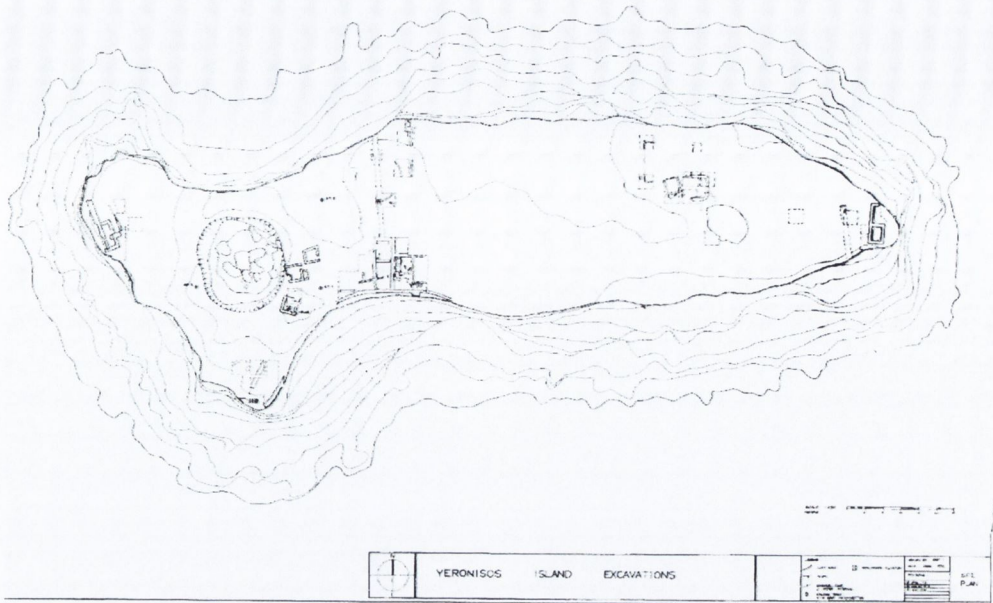


Fig. 5: State plan of Geronisos (Connelly and Plantzos 2006, 289, fig. 40).

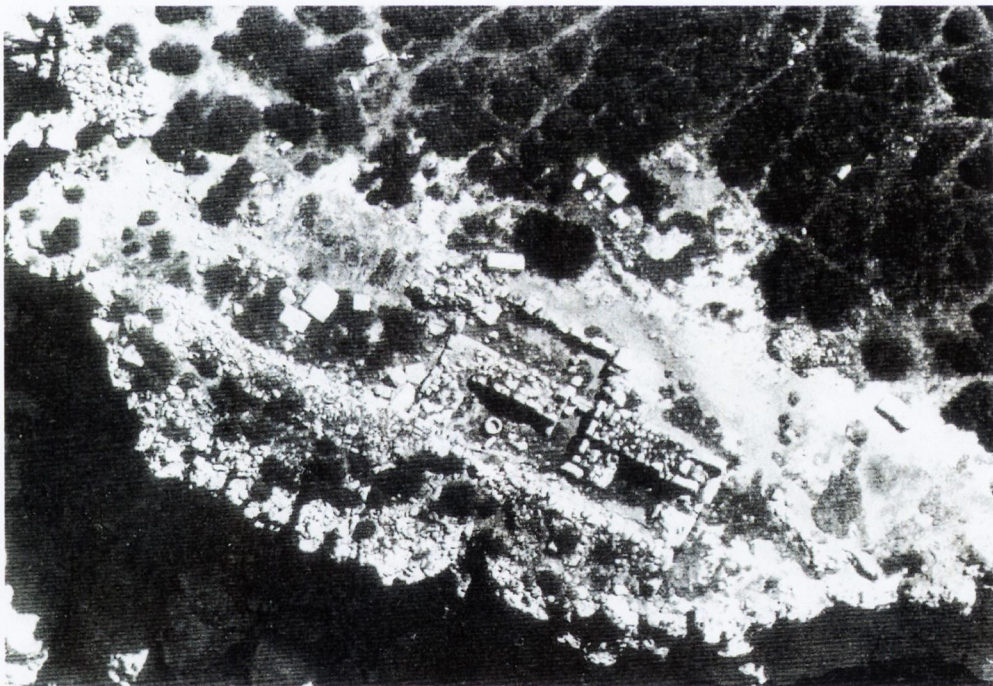


Fig. 6: Geronisos. Aerial view of the temple from the west (Connelly 2007a, 40, fig. 5).

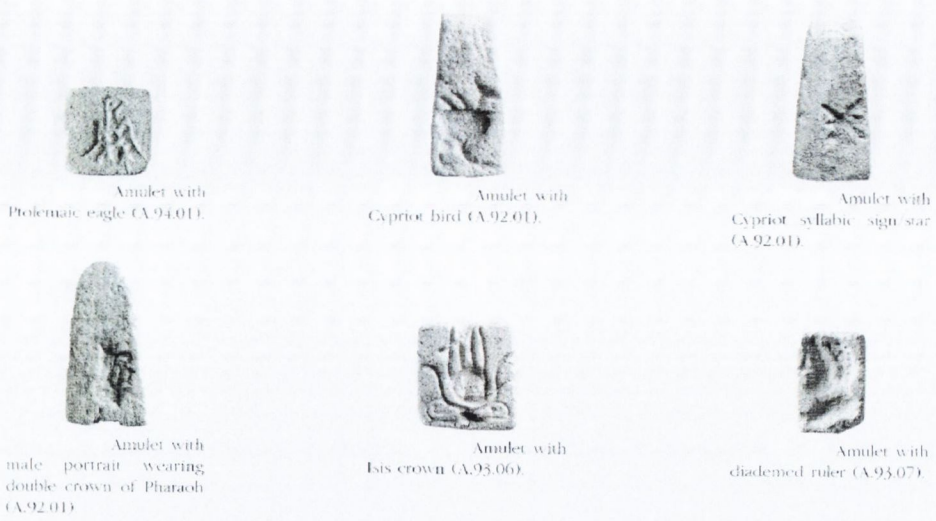


Fig. 7: Some of the Geronisos stamp-seals (after Connelly 2007a, 48).



Fig. 8: 'Temple-boy' – Metropolitan Museum of Art, New York (Beer 1994, pl. 176, no. 194).

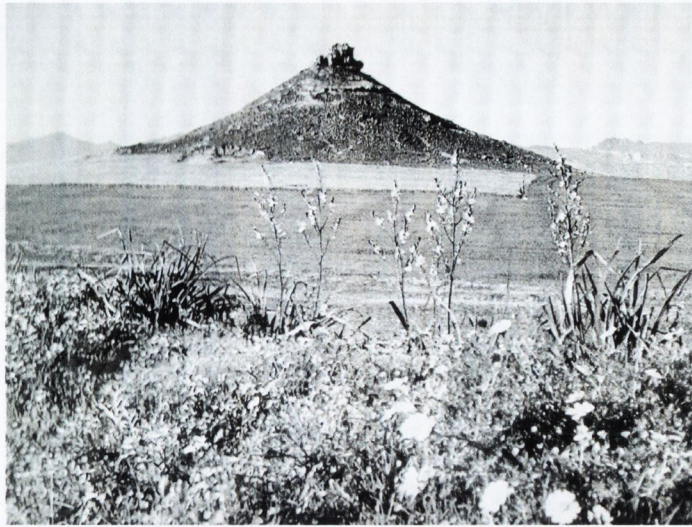


Fig. 9: The Hill of Kafizin from the field of Niphkia (Mitford 1980, frontispiece).

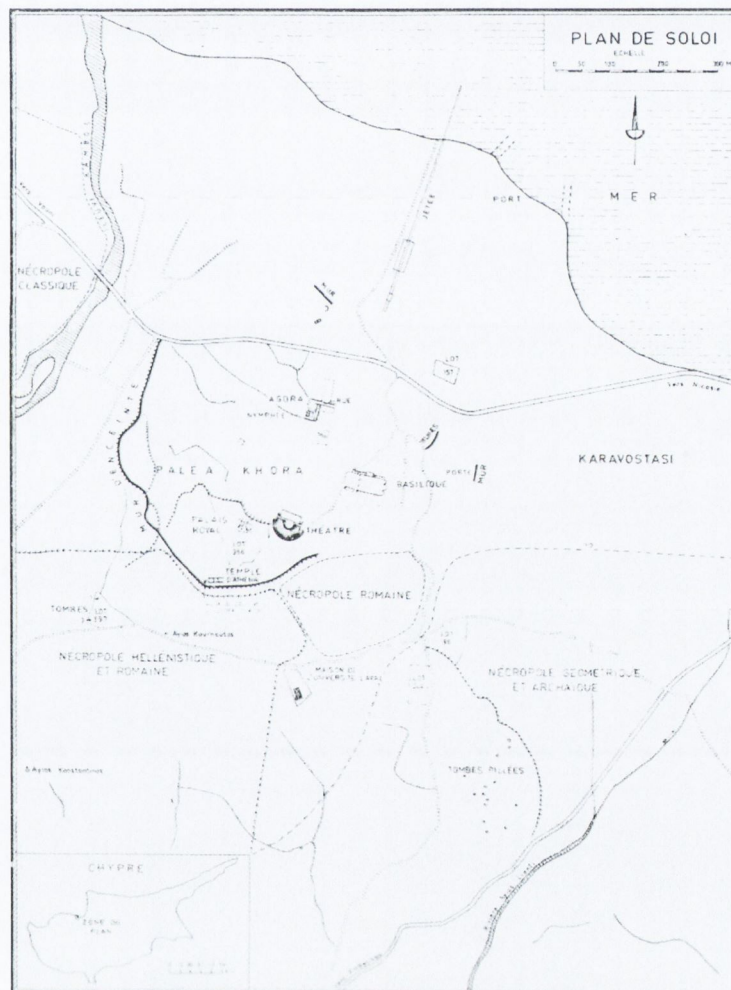


Fig. 10: General view of Soloi (Des Gagniers 1975, 217, fig. 1).

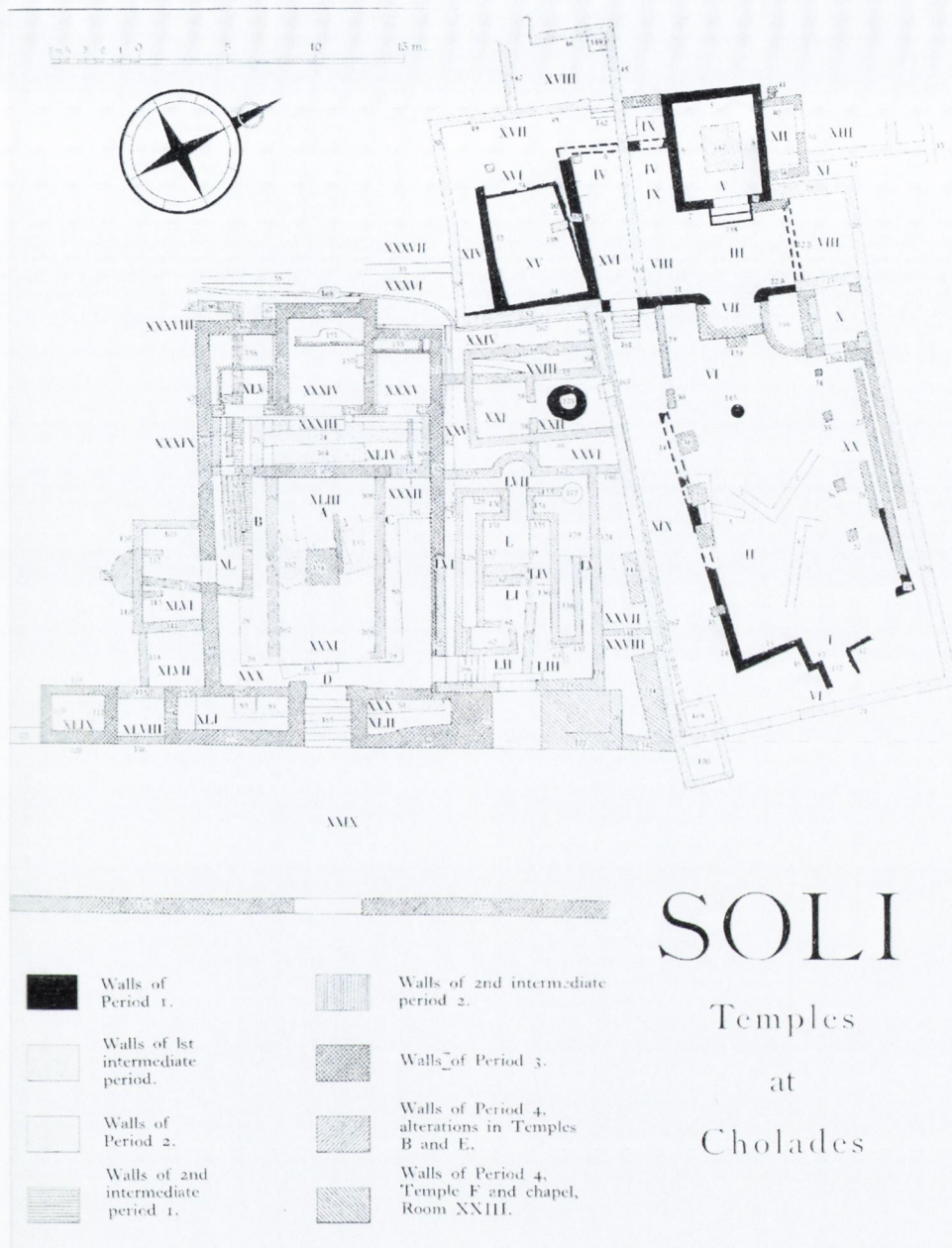


Fig. 11: Soloi-Cholades. Analytical plan of the temples (Westholm 1936, 87, fig. 50).

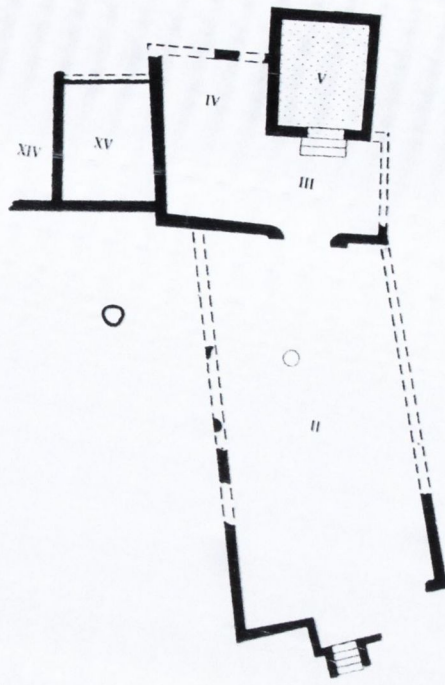


Fig. 12: Soloi-Cholades. Plan of temple A – period 1 (SCE 4(3): 2, fig. 1).

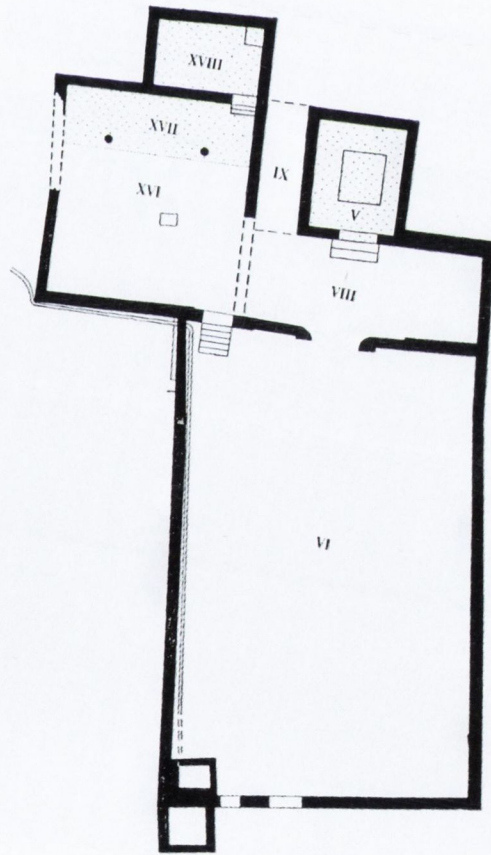


Fig. 13: Soloi-Cholades. Original plan of temples B and C – period 2 (SCE 4(3): 3, fig. 2).

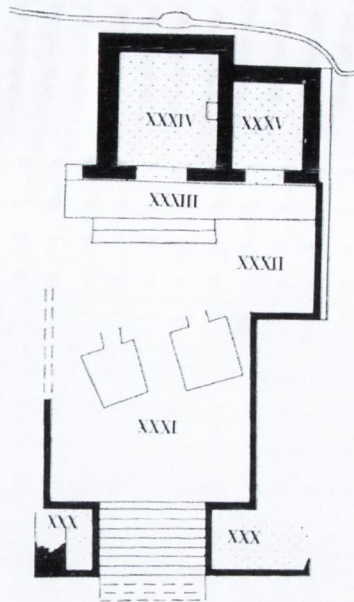


Fig. 14: Soloi-Cholades. Plan of temple D – period 2 (SCE 4(3): 5, fig. 4).

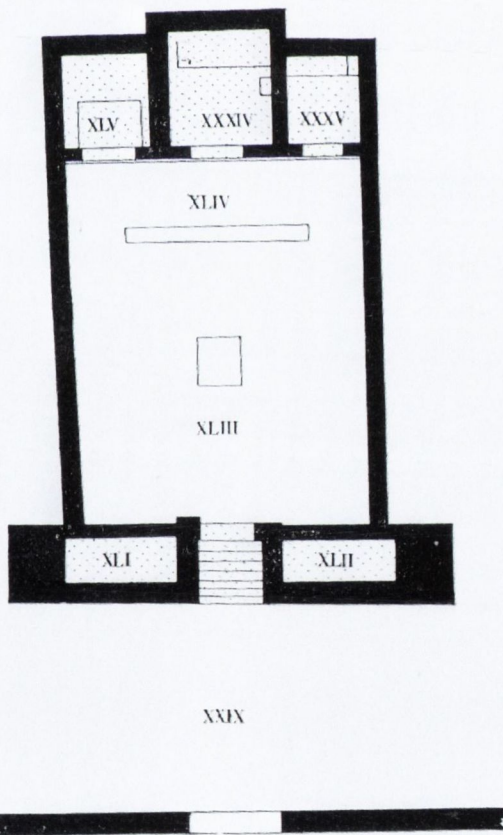


Fig. 15: Soloi-Cholades. Original plan of temple E – period 3 (SCE 4(3): 6, fig. 5).

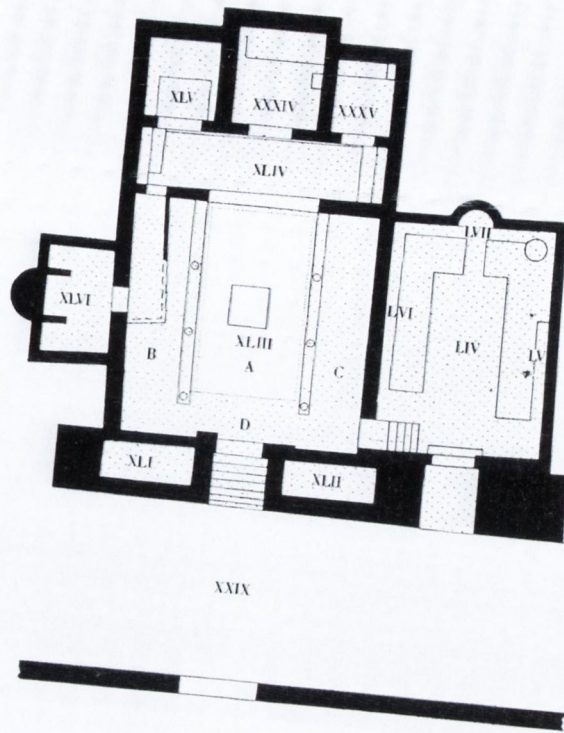


Fig. 16: Soloi-Cholades. Plan of temples E and F – period 4 (*SCE 4(3): 7, fig. 6*).

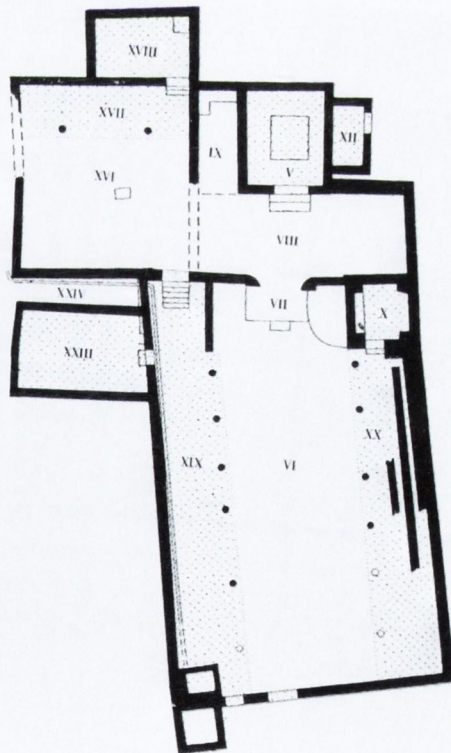


Fig. 17: Soloi-Cholades. Plan of temples B and C – period 4 (*SCE 4(3): 4, fig. 3*).

	Temple A	Temples B	C	D	Temple E	Temple F	Periods beginning about (cf. below):
Period 1	■						250 B. C.
1st Intermediate Period							End of 2nd Cent. B. C.
Period 2		■					After 50 B. C.
2nd Intermediate Period							End of 1st Cent. A. D.
Period 3					■		Middle of 3rd Cent. A. D.
Period 4						■ ? ■ ?	Beginning of 4th Cent. A. D.
	Styles I A—B	Styles II A—B			Style III	Style IV	

Fig. 18: Diagram representing the way in which the Soloi-Cholades sculptural styles were connected with the various temples and periods (Westholm 1936, 144).



Fig. 19: Soloi-Cholades. Marble head, style I B (Westholm 1936, pl. III, find 438).



Fig. 20: Soloi-Cholades. Marble sculpture, style I A (Westholm 1936, pl. II, find 447).



Fig. 21: Soloi-Cholades. Marble sculpture of Aphrodite, style I B (Westholm 1936, pl. V, finds 416 and 463).



Fig. 22: Soloi-Cholades. Marble sculpture of Aphrodite in arms, style I B (Westholm 1936, pl. VI, find 466).



Fig. 23: Soloi-Cholades. Marble sculpture, style I B (Westholm 1936, pl. VI, find 511).



Fig. 24: Soloi-Cholades. Marble sculpture, style I B (Westholm 1936, pl. VI, find 497).



Fig. 25: Soloi-Cholades. Limestone sculpture, style I A (Westholm 1936, pl. X, find 518).



Fig. 26: Soloi-Cholades. Marble sculpture, part of an Eros statue, style I B (Westholm 1936, pl. V, find 464).



Fig. 27: Soloi-Cholades. Limestone sculpture of Cybele (Westholm 1936, pl. IX, find 446).



Fig. 28: Soloi-Cholades. Limestone sculpture of Cybele, style I B (Westholm 1936, pl. XII, find 418).



Fig. 29: Soloi-Cholades. Limestone sculpture of Isis, style II B (Westholm 1936, pl. XV, find 427).



Fig. 30: Soloi-Cholades. Limestone statue of Isis (Westholm 1936, pl. IX, find 314).



Fig. 31: Soloi-Cholades. Limestone statue of Isis, style II B (Westholm 1936, pl. XVII, find 320).



Fig. 32: Soloi-Cholades. Limestone sculpture of Sarapis, style III (Westholm 1936, pl. XIX, find 318).



Fig. 33: Soloi-Cholades. Limestone statue of Dioskuros, style III (Westholm 1936, pl. XIX, find 316).



Fig. 34: Soloi-Cholades. Limestone statue of Dioscurus, style III (Westholm 1936, pl. XIX, find 334).



Fig. 35: Soloi-Cholades. Limestone statue of Osiris-Canopus, style IV (Westholm 1936, pl. XXIII, find 329).

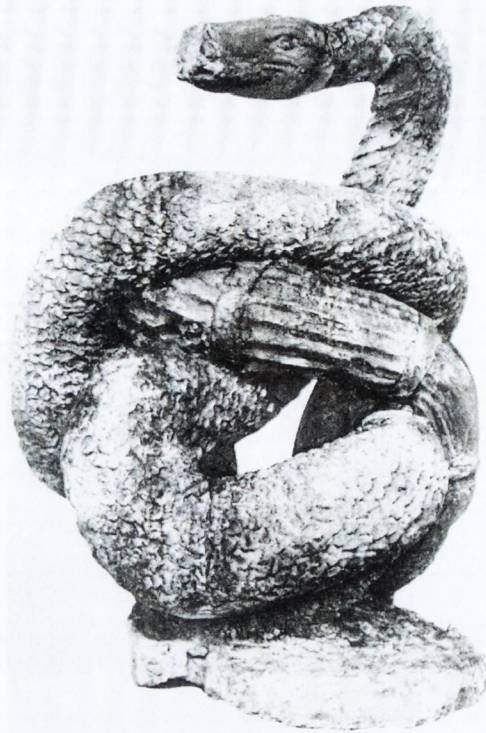


Fig. 36: Soloi-Cholades. Limestone statue of Agathos Daimon, style III (Westholm 1936, pl. XX, find 335).



Fig. 37: Soloi-Cholades. Limestone sculpture of Eros, style III (Westholm 1936, pl. XX, find 407).



Fig. 38: Soloi-Cholades. Limestone statue, style IV (Westholm 1936, pl. XXII, find 319).



Fig. 39: Vitsada limestone 'altar' (SCE 4(3): pl. XIII).



Fig. 40: Soloi-Cholades. Limestone head of Alexander the Great, style I B (Westholm 1936, pl. XIV. find 520).



Fig. 41: Soloi-Cholades. Limestone sculpture, style I A (Westholm 1936, pl. II, find 457).



Fig. 42: Soloi-Cholades. Limestone sculpture of an eagle, style I A (Westholm 1936, pl. XI, find 533).



Fig. 43: Ptolemaic silver coin from Cyprus – Bank of Cyprus Cultural Foundation, Nicosia (Zapiti-Michaelidou 2007, 130, no. 34).



Fig. 44: Ptolemaic bronze coin from Cyprus – Bank of Cyprus Cultural Foundation, Nicosia (Zapiti and Michaelidou, 133, no. 51).



Fig. 45: 'Magenta ware', from Idalion – Louvre Museum, Paris (Yon 1985, pl. XXXIX, fig. 3).



Fig. 46: 'Queen faience vase', from Alexandria – British Museum, London (Pollitt 1986, 254, fig. 274a).

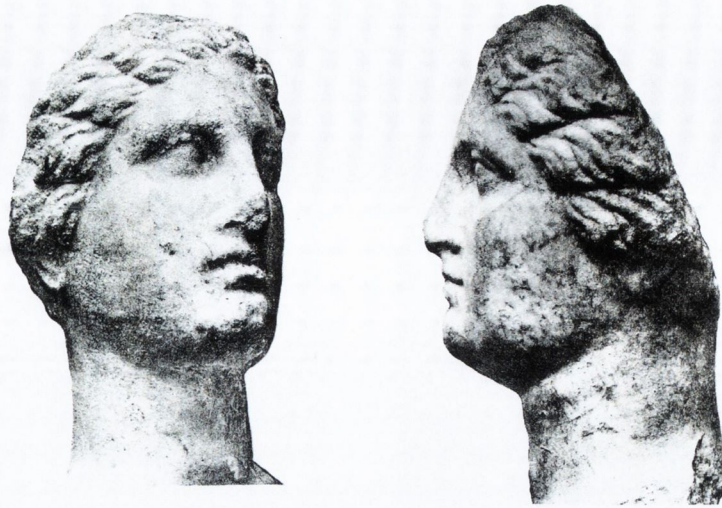


Fig. 47: Soloi-Cholades. Marble sculpture, style I A (Westholm 1936, pl. I, find 425).

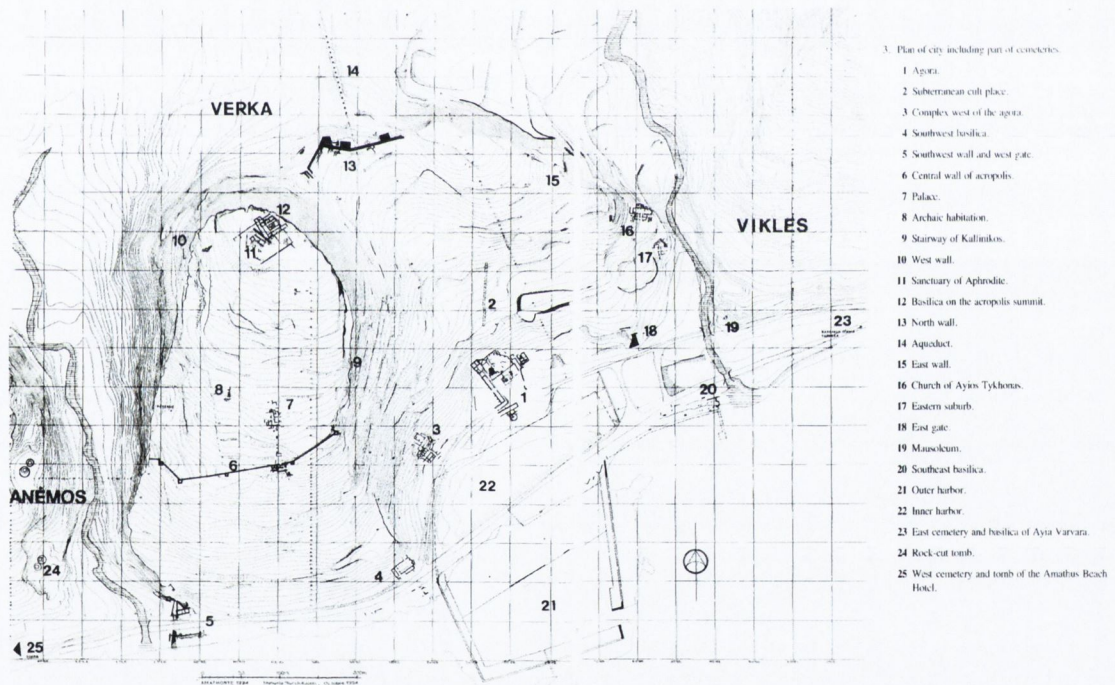


Fig. 48: Plan of the Amathous city including part of its cemeteries (Aupert 2000c, 12-13, fig. 3).

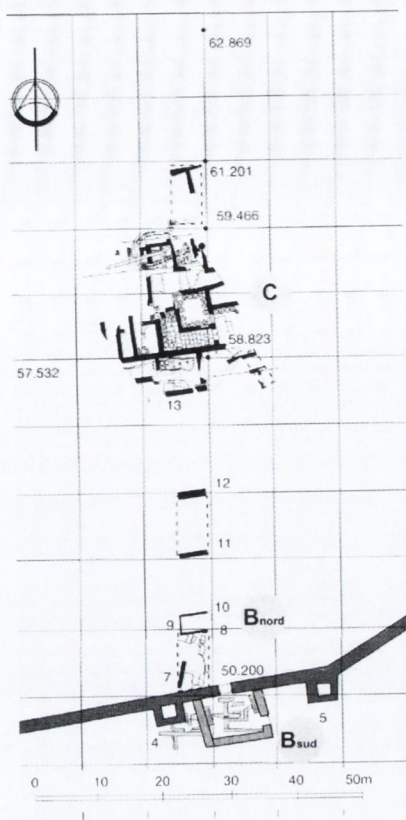


Fig. 49: Plan of the Amathous palace (Petit 2002, 319, fig. 2).

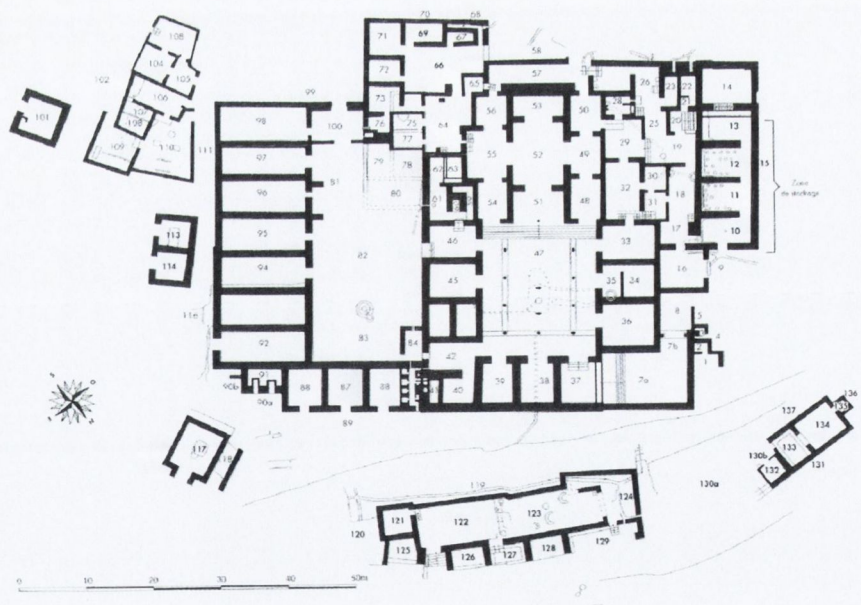


Fig. 50: Plan of the Vouni palace (Hermayr 2001a, 18, fig. 2).



Fig. 51: Amathous. Limestone Hator capital found in the 'Propylon' palatial sanctuary (Hermay 2000a, pl. 83, no. 969).

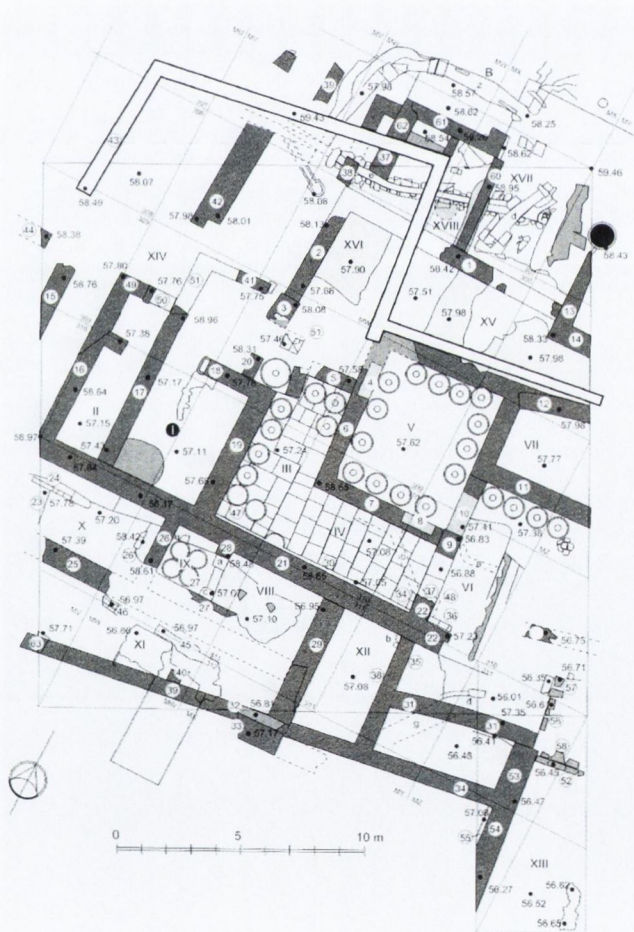


Fig. 52: Amathous. Plan of the palace storerooms with the 'Kouros' sanctuary (Petit 2002, 320, fig. 5).



Fig. 53: Amathous. Limestone kouros from the 'Kouros' palatial sanctuary (Hermay 2000a, pl. 65, no. 847).

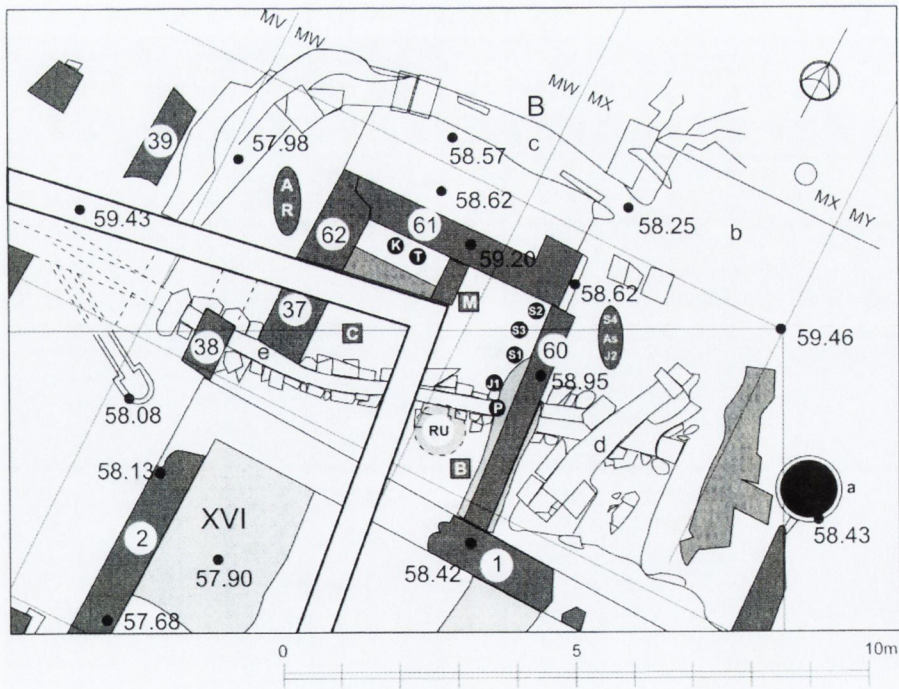


Fig. 54: Amathous. Plan of the 'Baetyl' palatial sanctuary (Petit 2002, 321, fig. 6).



Fig. 55: Amathous. Limestone statuette interpreted as 'priest with the mask', found in the '*Baetyl*' palatial sanctuary (Hermay 2000a, pl. 71, no. 877).



Fig. 56: Amathous. Limestone kore statuette holding a flower, found in the '*Baetyl*' palatial sanctuary (Hermay 2000a, pl. 54, no. 761).



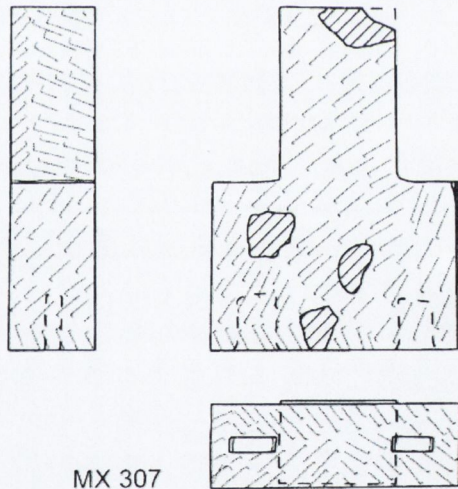
Fig. 57: Amathous. Limestone kouros statuette, found in the 'Baetyl' palatial sanctuary (Hermay 2000a, pl. 64, no. 846).



Fig. 58: Amathous. Limestone male head wearing a *mitra*, found in the 'Baetyl' palatial sanctuary (Hermay 2000a, pl. 71, no. 878).



Fig. 59: Amathous. Limestone sphinx *thymiaterion*, found in the 'Baetyl' palatial sanctuary (Hermay 2000a, pl. 74, no. 888).



MX 307

Fig. 60: Amathous. Stone in the form of *T*, found in the 'Baetyl' palatial sanctuary (Petit 2002, 325, fig. 18).

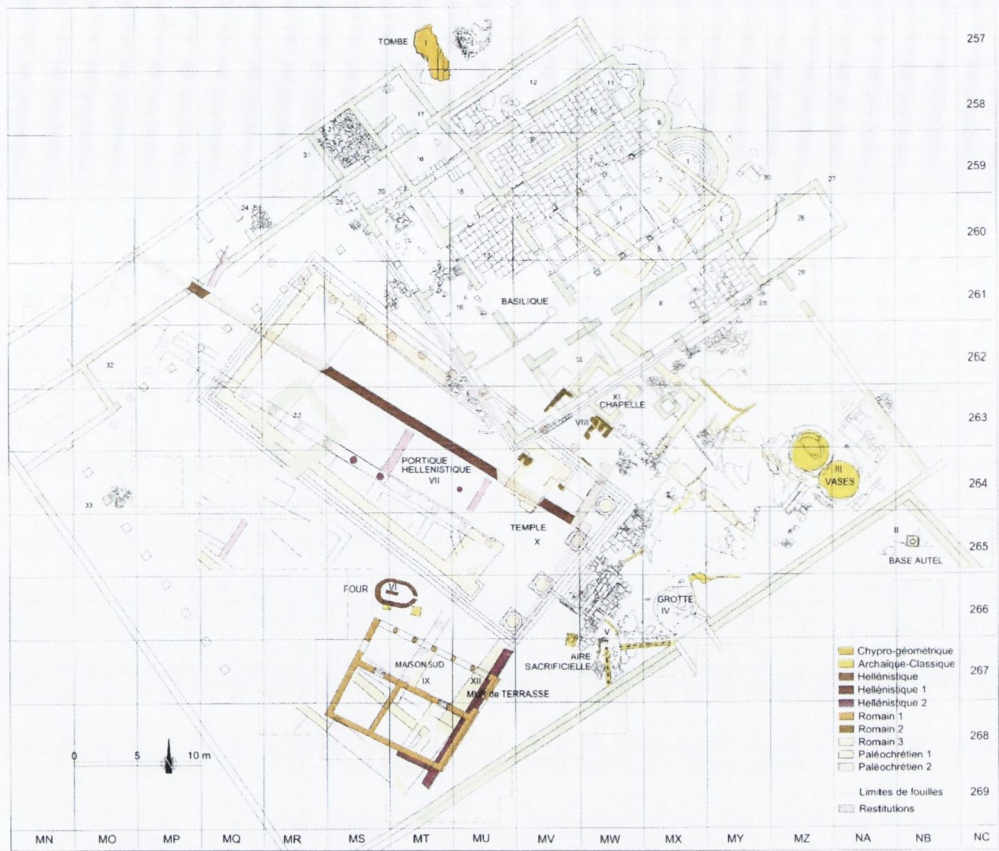


Fig. 61: Amathous. Plan of the Aphrodite sanctuary on the top of the acropolis (Fourrier and Hermery 2006, fig. 3).



Fig. 62: Amathous. Aerial view of the Aphrodite sanctuary (Fourrier and Hermery 2006, pl. 5, no. 2).

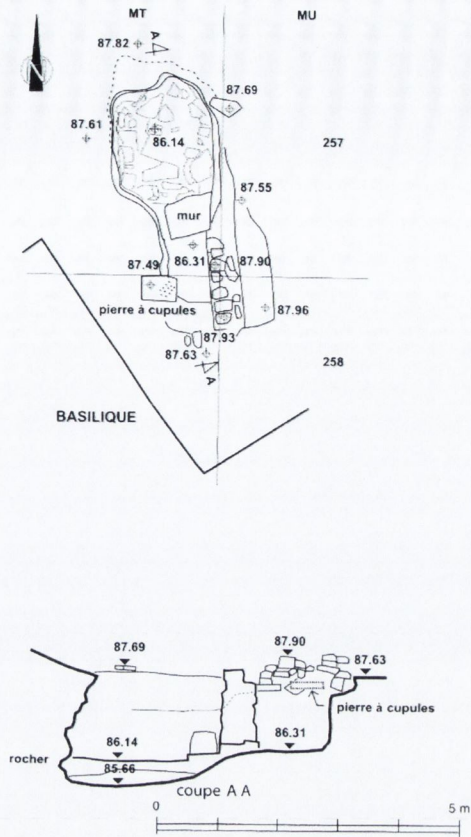


Fig. 63: Amathous. Plan and section of the 'tomb of Ariadne' (Fourrier and Hermary 2006, fig. 9).



Fig. 64: Amathous, sanctuary of Aphrodite. 'tomb of Ariadne' (Fourrier and Hermary 2006, pl. 8, no. 6).



Fig. 65: Amathous. Stone with round cavities, found in the 'tomb of Ariadne' (Fourrier and Hermary 2006, pl. 8, no. 4).



Fig. 66: Amathous. Colossal limestone vase – Louvre Museum, Paris (Hermary 1981, plates, no. 81).



Fig. 67: Amathous. Copy of the colossal Louvre vase with its fragmentary one *in situ* (Fourrier and Hermary 2006, pl. 9, no. 1).

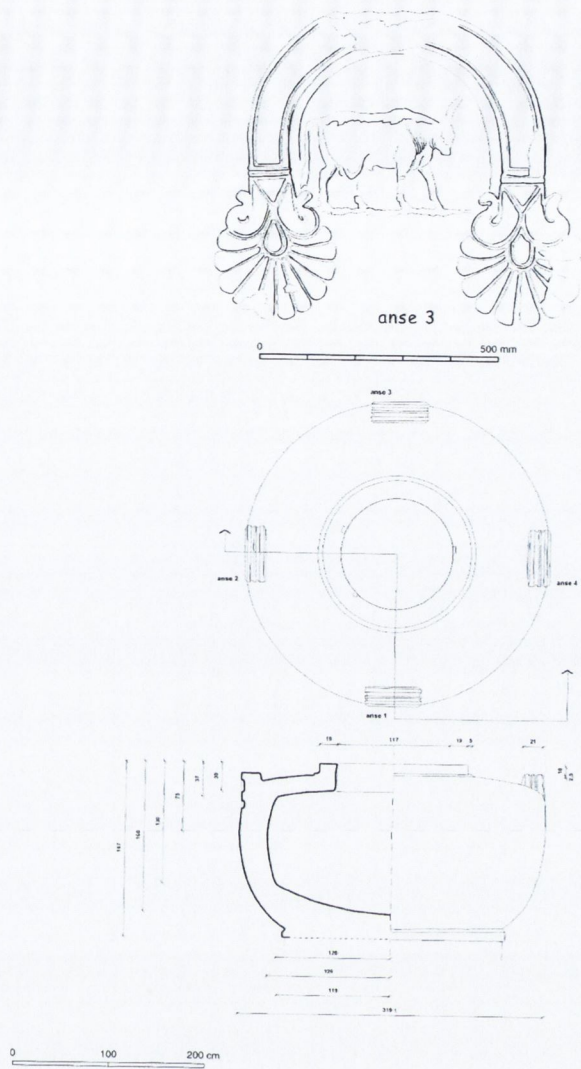


Fig. 68: Louvre vase. Detail drawing of its dimensions and the decoration of its handles (Fourrier and Hermery 2006, fig. 15).

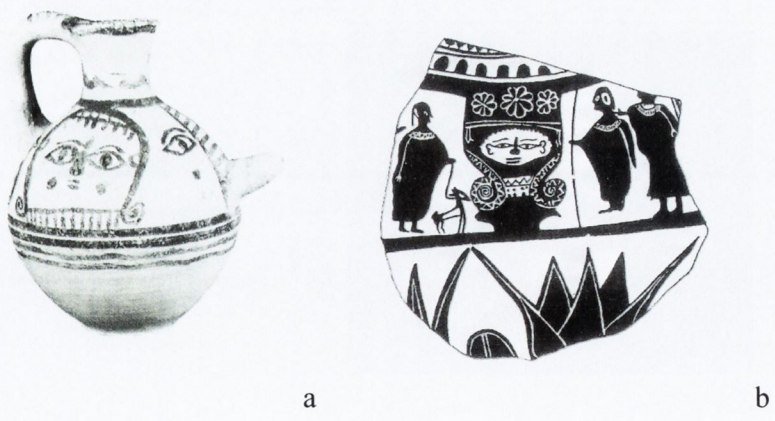


Fig. 69: 'Amathous-style' jars bearing the image of 'Hathor' – a. District Museum, Limassol, b. Louvre Museum, Paris (Aupert 2000c, 25, figs 11, 12).

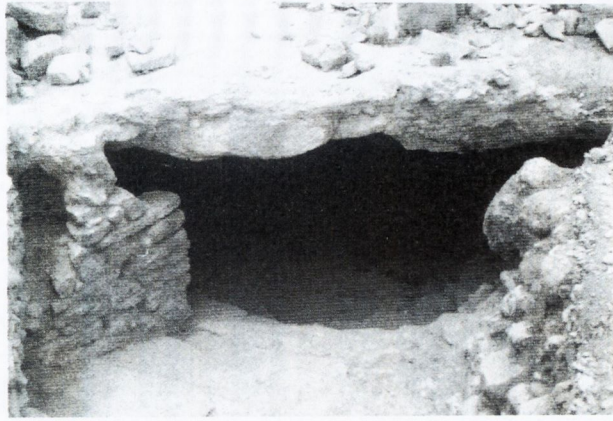


Fig. 70: Amathous, sanctuary of Aphrodite. The grotto (Fourrier and Hermary 2006, pl. 8, no. 7).

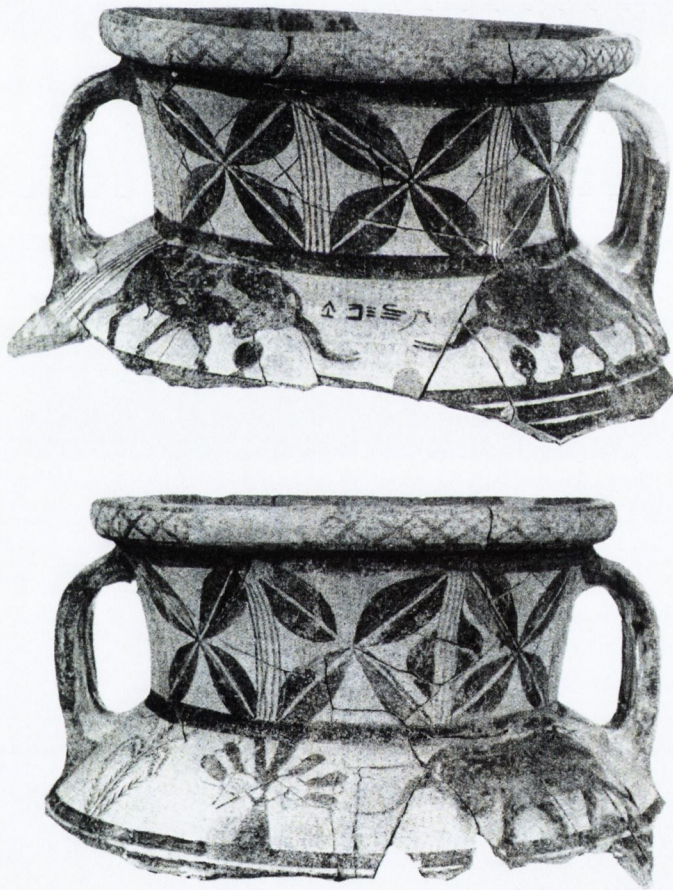


Fig. 71: Amathous. Bichrome krater with bulls found in the grotto, sanctuary of Aphrodite (Hermary and Masson 1990, 189, figs 1, 2).

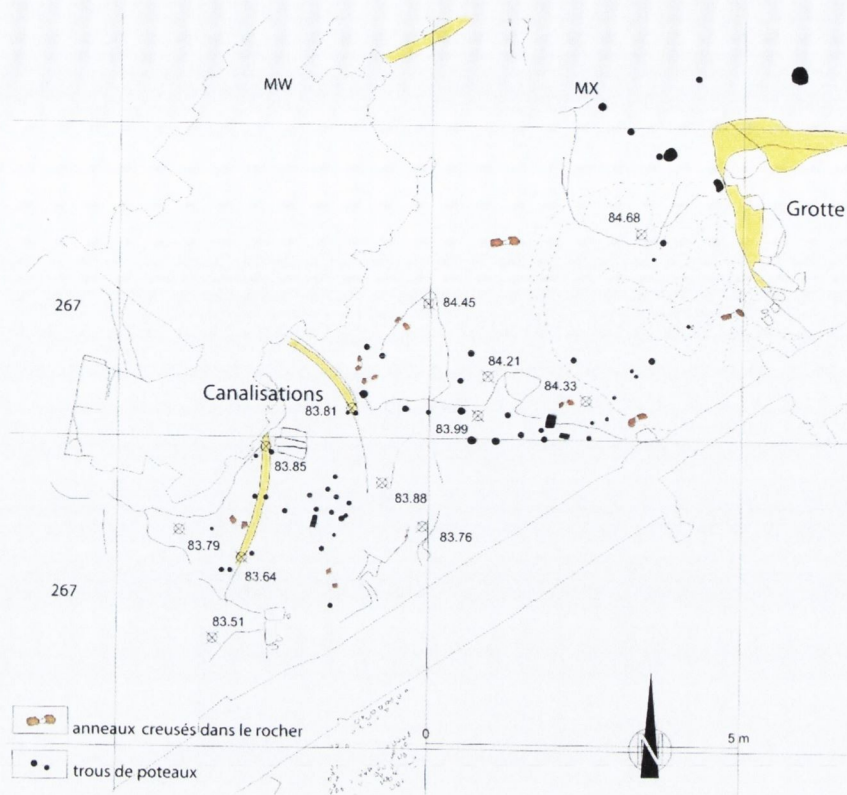


Fig. 72: Amathous, sanctuary of Aphrodite. Sacrificial area of the Cypro-Archaic period (Fourrier and Hermary 2006, fig. 19).



Fig. 73: Amathous, sanctuary of Aphrodite. Canalisation system within the sacrificial area of the Cypro-Archaic period (Fourrier and Hermary 2006, pl. 7, no. 4).

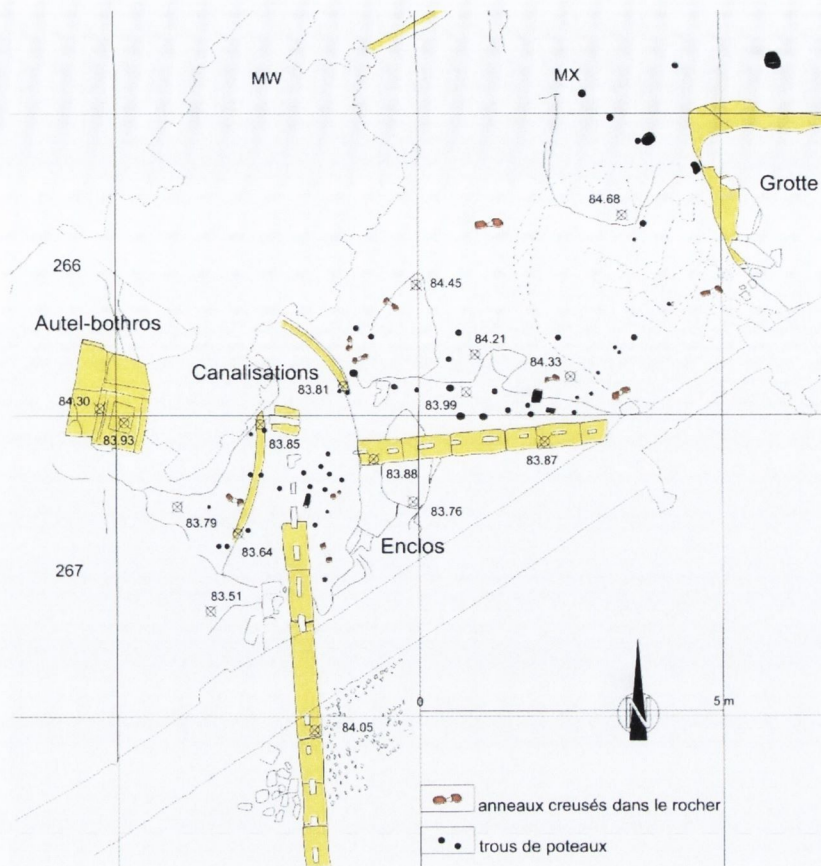


Fig. 74: Amathous, sanctuary of Aphrodite. Sacrificial area of the end of Cypro-Archaic/beginning of Cypro-Classical period (Fourrier and Hermary 2006, fig. 20).

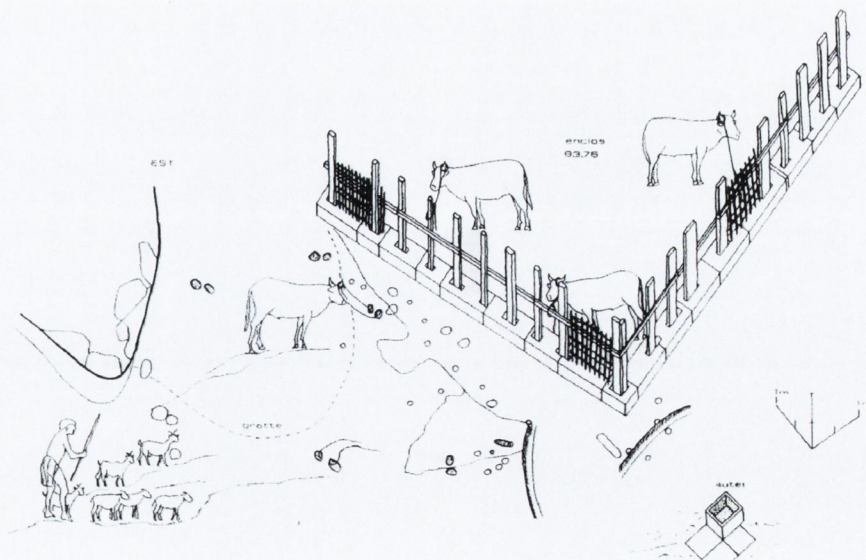


Fig. 75: Amathous, sanctuary of Aphrodite. Enclosure to pen up animals waiting to be sacrificed (Fourrier and Hermary 2006, fig. 495).



Fig. 76: Amathous, sanctuary of Aphrodite. Sacrificial pit (Fourrier and Hermary 2006, pl. 11, no. 2).



Fig. 77: Amathous, sanctuary of Aphrodite. Architectural element probably related to libations or a grape or olive press (Fourrier and Hermary 2006, 49, 8).

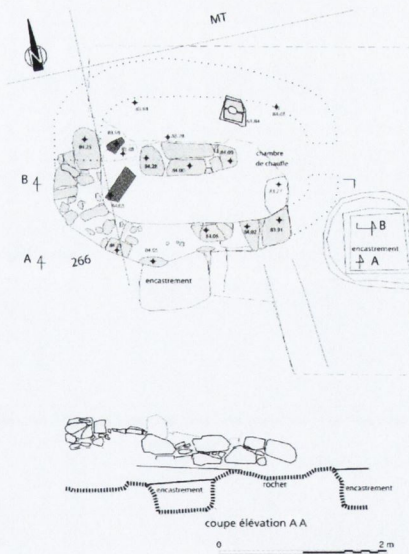


Fig. 78: Amathous, sanctuary of Aphrodite. Plan of the Hellenistic kiln (Fourrier and Hermary 2006, fig. 26).

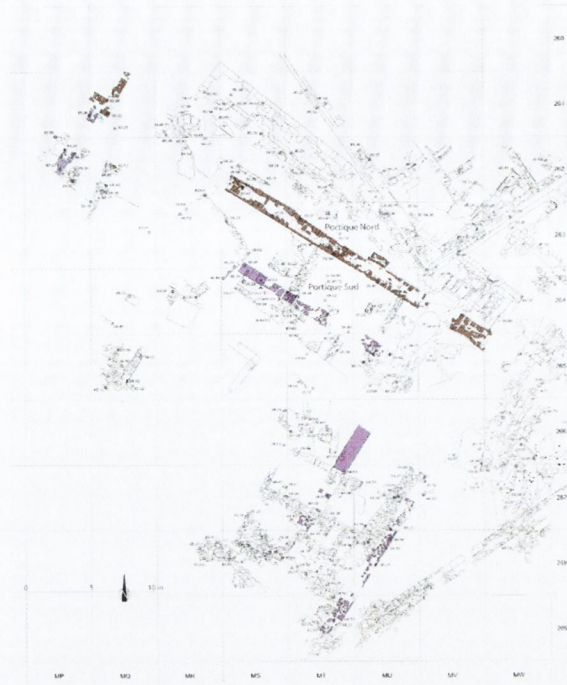


Fig. 79: Amathous, sanctuary of Aphrodite. Plan of the Hellenistic portico remains (Fourrier and Hermary 2006, fig. 30).

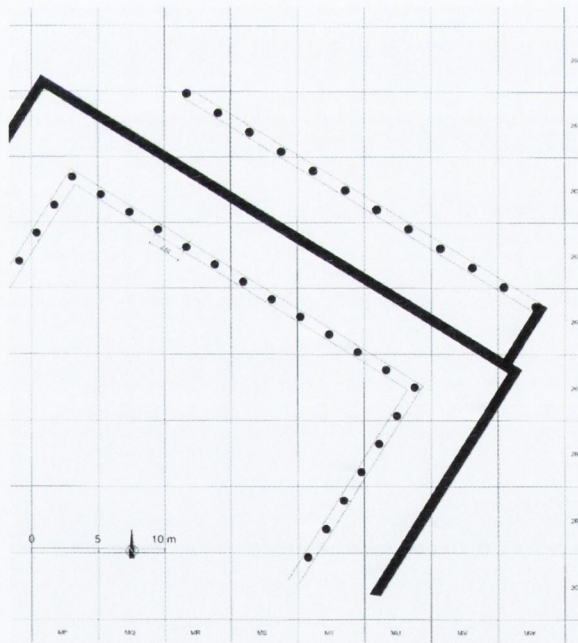


Fig. 80: Amathous, sanctuary of Aphrodite. Hypothetical restitution of the two porticos (Fourrier and Hermary 2006, fig. 37).

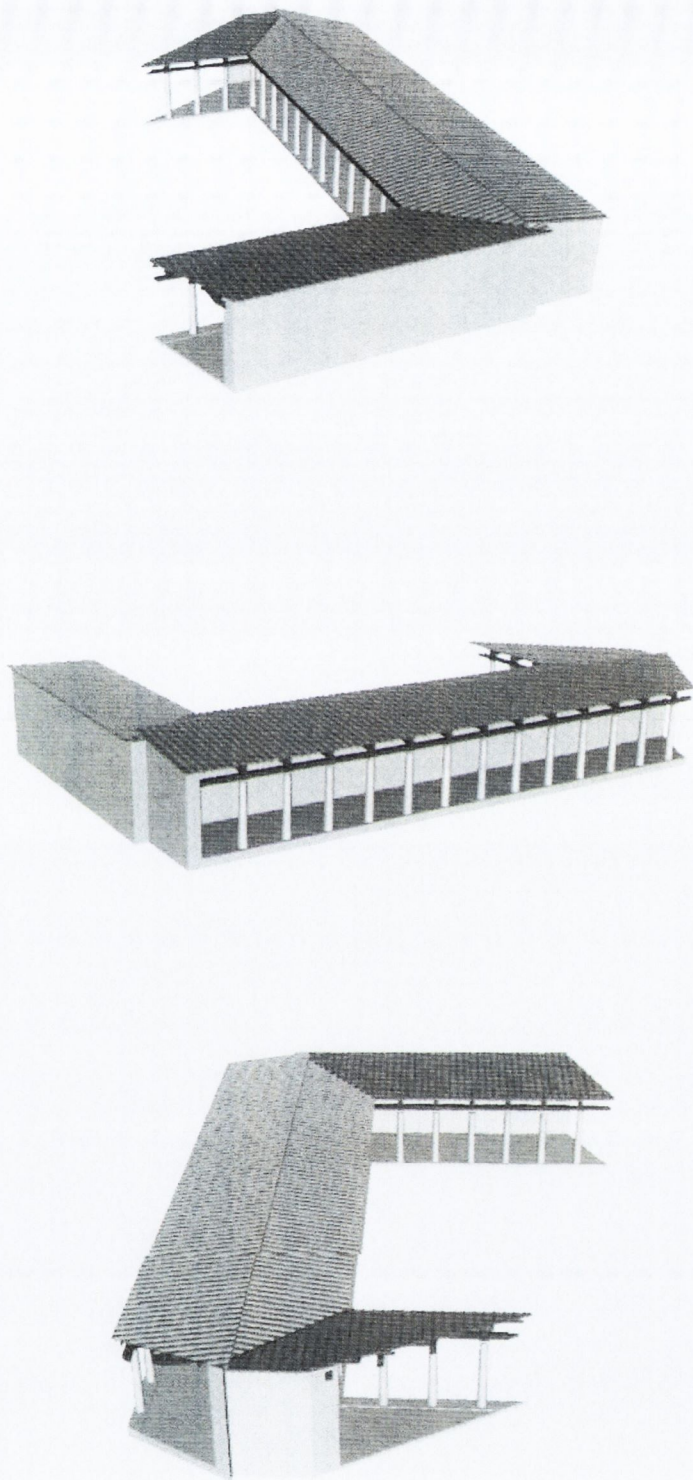


Fig. 81: Amathous, sanctuary of Aphrodite. Hypothetical restoration of the double portico (Fourrier and Hermary 2006, fig. 503).

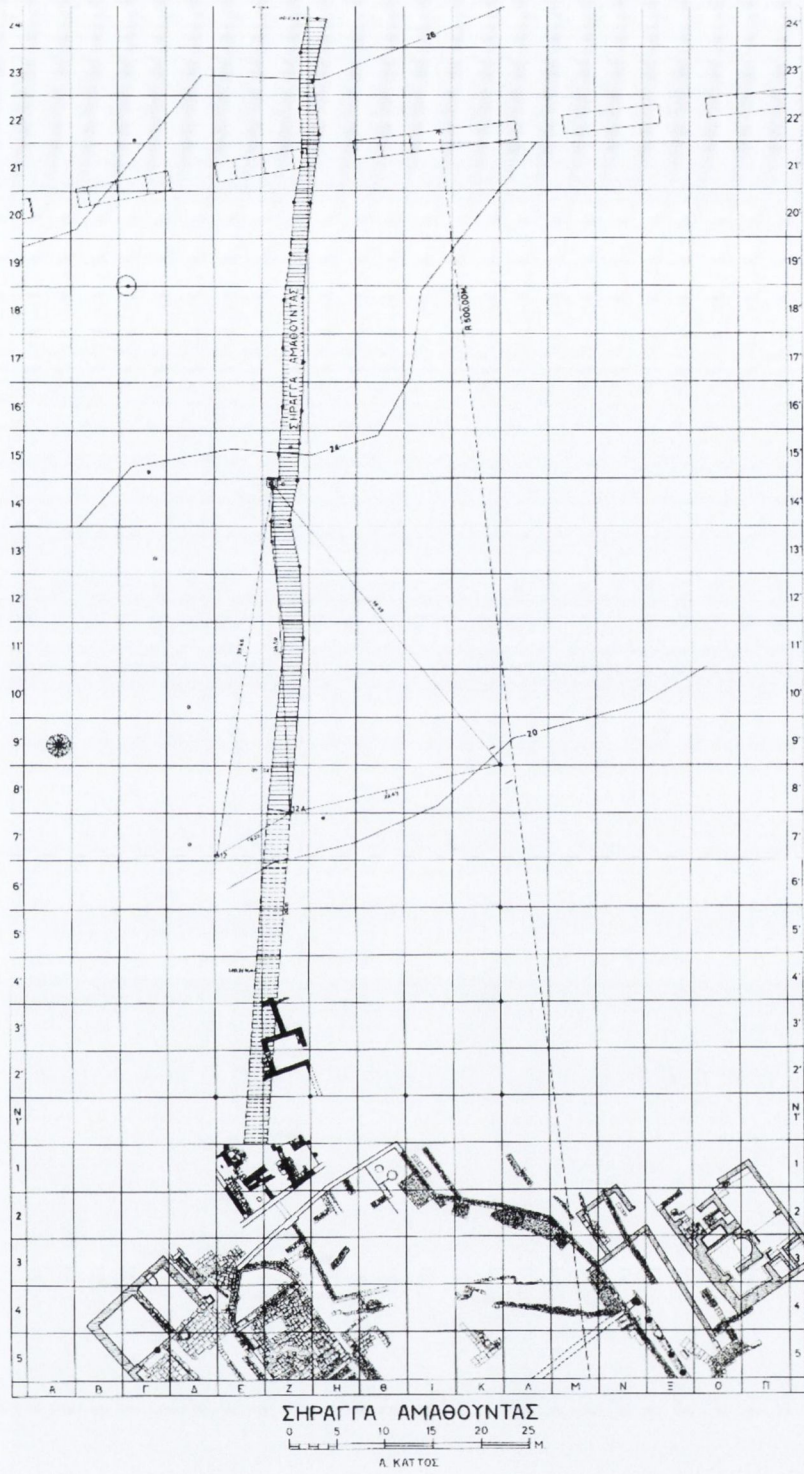


Fig. 82: Amathous. Plan of the 'subterranean cult place' (Flourentzos 2004, 4, fig. 2).



Fig. 83: Amathous, 'subterranean cult place. Cuttings on wall in order to accept lamps for the lighting of the place (Flourentzos 2004, pl. 1, no. 1).

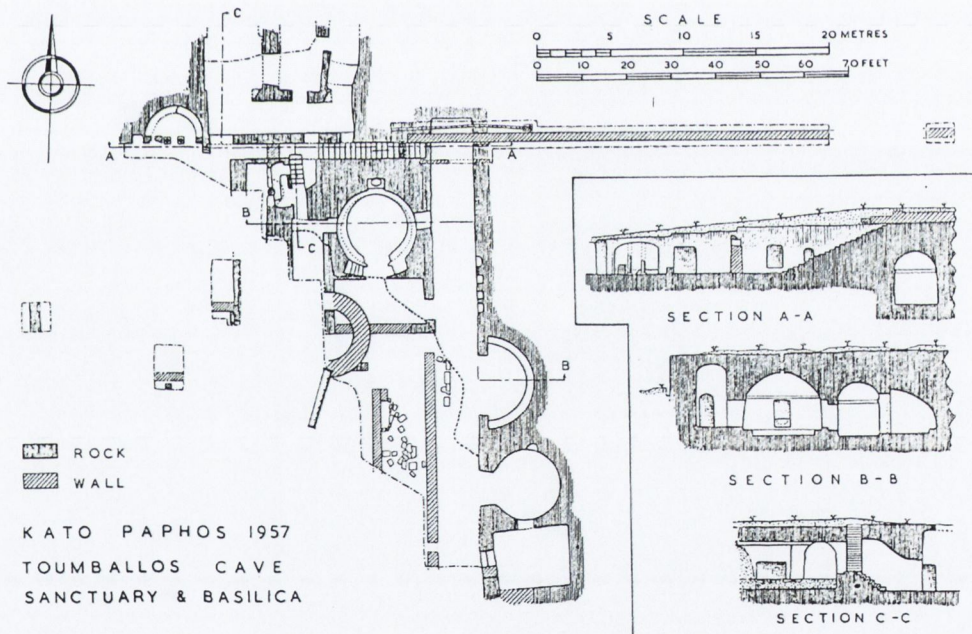


Fig. 84: Nea Paphos. Plan and sections of the rock-cult chambers at the Toumbalos sanctuary or 'Garrison's Camp' (Nicolau 1966, 585, fig. 19).



Fig. 85: Amathous, 'subterranean cult place'. The votive deposit (Flourentzos 2004, 5, fig. 3 and pl. III, no. 2).



Fig. 86: Amathous, 'subterranean cult place'. Limestone 'temple-boys' with a snake (Flourentzos 2004, pl. XVIII, no. 77).



Fig. 87: Amathous, 'subterranean cult place'. Spherical stone interpreted as *omphalos* (Flourentzos 2004, pl. XIX, no. 83).



Fig. 88: Amathous, 'subterranean cult place'. Limestone sculpture interpreted as 'Baal' (Flourentzos 2004, pl. XVIII, no. 78).



Fig. 89: Amathous, 'subterranean cult place'. Silenus terracotta figurine (Flourentzos 2004, pl. XXIX, no. 136).



Fig. 90: Amathous, 'subterranean cult place'. Terracotta figurine depicting an actor wearing a mask (Flourentzos 2004, pl. XXXII, no. 152).



Fig. 91: Amathous, 'subterranean cult place'. Terracotta figurine depicting Eros riding a goat (Flourentzos 2004, pl. XXX, no. 143).



Fig. 92: Amathous, 'subterranean cult place'. Limestone statue interpreted as Artemis (Flourentzos 2004, pl. XIII, no. 39).



Fig. 93: Amathous, 'subterranean cult place'. Limestone statue interpreted as Demeter or Persphephone (Flourentzos 2004, pl. XV, no. 56).



Fig. 94: Amathous, 'subterranean cult place'. Apollo terracotta figurine (Flourentzos 2004, pl. XXVII, no. 129).



Fig. 95: Amathous, 'subterranean cult place'. Muse terracotta figurine (Flourentzos 2004, pl. XXIX, no. 138).



Fig. 96: Figurine of the 'goddess with upraised hands' type – Ashmolean Museum, Oxford (Karageorghis 1998b, 4, fig. 5).



Fig. 97: Amathous. 'Astarte plaque' (Karageorghis, J. 2005, 92, fig. 87a).



276

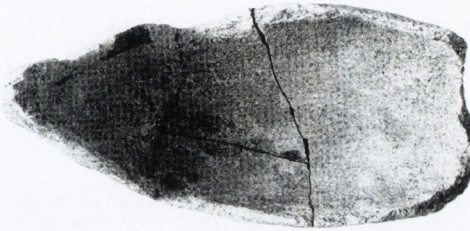


Fig. 98: Amathous. Terracotta boat model (Hermay 2000a, pl. 20, no. 276).



Fig. 99: Terracotta model of a sanctuary with a 'goddess' standing at the window, probably from Amathous – Cyprus Museum, Nicosia (Karageorghis, J. 2005, 95, fig. 90b).



Fig. 100: Amathous. Terracotta figurine representing a person holding a circular object (Karageorghis, J. 2005, 96, fig. 91c).



Fig. 101: Amathous. Terracotta figurine representing a person playing the tambourine (Hermay 2000a, pl. 4, no. 19).



Fig. 102: Amathous. Cypro-Classical stone statuette holding a winged disc (Hermery 2000a, pl. 61, no. 829).



Fig. 103: Cypro-Classical stone statuette holding a tambourine (Hermery 2000a, pl. 61, no. 826).



Fig. 104: Amathous. Terracotta rider figurine (Hermery 2000a, pl. 12, no. 117).



Fig. 105: Amathous. Terracotta figurine of the rider type wearing a conical helmet (Hermery 2000a, pl. 17, no. 208).



Fig. 106: Amathous. Terracotta figurine of the rider type wearing a *mitra* (Hermery 2000a, pl. 17, no. 209).



Fig. 107: Amathous. Terracotta figurine depicting a person wearing a human mask (Fourrier and Hermary 2006, pl. 15, no. 99).



Fig. 108: Kourion. Group of figurines depicting persons wearing masks – Cyprus Museum (after Young and Young 1955, pl. 11).



Fig. 109: Amathous. Terracotta figurine depicting a person wearing a bull's mask (Karageorghis 1987, pl. II, no. 5).



Fig. 110: Amathous. Terracotta human mask (Hermayr 2000a, pl. 32, no. 506).



Fig. 111: Amathous. Terracotta 'Bes' mask – British Museum, London (Karageorghis 1990, pl. 1, no. 1).

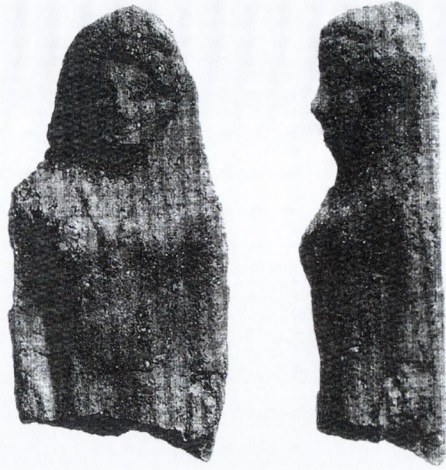


Fig. 112: Amathous. Kore figurine in the Cypriot tradition (Hermayr 2000a, pl. 40, no. 599).



Fig. 113: Amathous. Kore figurine imitating Greek types (Hermayr 2000a, pl. 41, no. 608).



Fig. 114: Amathous. Terracotta figurine of the severe style (Hermayr 2000a, pl. 46, no. 699).



Fig. 115: Amathous. Terracotta figurine depicting a woman with a turreted crown (Hermayr 2000a, pl. 49, no. 715).



Fig. 116: Salamis coin depicting a woman with a turreted crown interpreted as Aphrodite and comparison with similar sculptures (after Markou 2007, pl. II).



Fig. 117: Golgoi. Statue of Aphrodite with Eros – Metropolitan Museum of Art, New York (*SCE* 4(3): pl. IX, fig. 1).



Fig. 118: Amathous. Terracotta figurine, Aphrodite dressed (Queyrel 1988, pl. 3, no. 1).



Fig. 119: Amathous. Terracotta figurine, Aphrodite with one breast uncovered (Queyrel 1988, pl. 4, no. 20).



Fig. 120: Amathous. Terracotta figurine, semi-naked Aphrodite resting on a pillar (Queyrel 1988, pl. 10, no. 86).



Fig. 121: Amathous. Terracotta figurine, naked holding her breasts with her two hands (Queyrel 1988, pl. 11, no. 96).



Fig. 122: Amathous. Terracotta figurine, restitution of the Aphrodite with Eros type (Queyrel 1988, pl. 12).

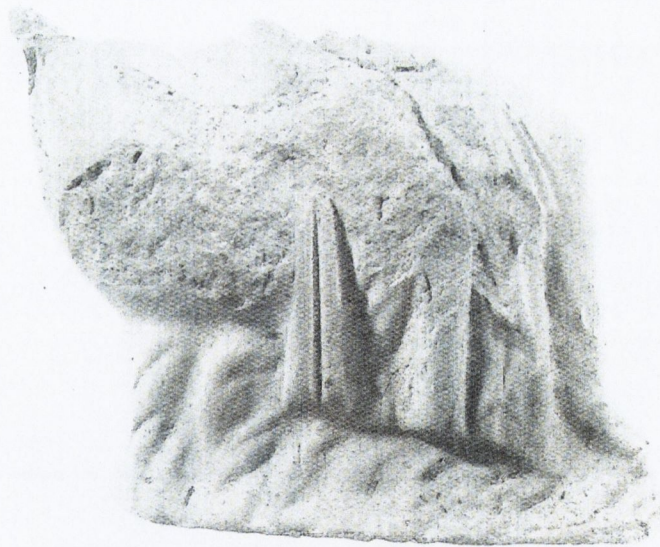


Fig. 123: Amathous. Terracotta figurine, Aphrodite sitting on a swan (Queyrel 1988, pl. 12, no. 115).



Fig. 124: Amathous. Terracotta figurine, 'Cypriot Aphrodite' (Queyrel 1988, pl. 12, no. 116).



Fig. 125: Amathous. Terracotta Eros figurine (Queyrel 1988, pl. 13, no. 127).



Fig. 126: Amathous. Terracotta Eros figurine – British Museum, London (Queyrel 1988, pl. 83).



Fig. 127: Amathous. Terracotta figurine depicting Eros and Psyche (Hermay 2000a, pl. 53, no. 755).



Fig. 128: Amathous. Terracotta figurine of Isis, type 1 (Queyrel 1988, pl. 14, no. 128).



Fig. 129: Amathous. Terracotta figurine of Isis, type 2 (Queyrel 1988, pl. 14, no. 167).



Fig. 130: Amathous. Terracotta figurine of Isis' priest (Queyrel 1988, pl. 38, no. 377).



Fig. 131: Amathous. Terracotta figurine of Artemis depicted armed (Queyrel 1988, pl. 23, no. 213).



Fig. 132: Amathous. Terracotta figurine of Artemis as *dadophoros* (Flourentzos 2004, pl. XXVI, no. 127).



Fig. 133: Amathous. Terracotta figurine of Attis (Queyrel 1988, pl. 27, no. 250).



Fig. 134: Amathous. Terracotta figurine of Dioscurus and restitution of the twins group (Queyrel 1988, pls 25-6, no. 240).



Fig. 135: Amathous. Kourotophos terracotta figurine (Queyrel 1988, pl. 28, no. 260).



Fig. 136: Amathous. Terracotta figurine representing a woman playing the *trigonon* (Queyrel 1988, pl. 29, no. 271).



Fig. 137: Amathous. Terracotta figurine representing a woman playing the tambourine (Queyrel 1988, pl. 30, no. 289).



Fig. 138: Amathous. Terracotta figurine representing a woman dancing (Queyrel 1988, pl. 32, no. 304).



Fig. 139: Amathous. Terracotta figurine depicting a woman veiling the face (Queyrel 1988, pl. 34, no. 333).



Fig. 140: Amathous. Terracotta figurine of *hydrophoros* (Queyrel 1988, pl. 34, no. 337).



Fig. 141: Amathous. Terracotta figurine of a cult agent with her hands in hieratic pose (Queyrel 1988, pl. 36, no. 348).



Fig. 142: Amathous. Terracotta figurine, Tanagra style (Queyrel 1988, pl. 40, no. 388).

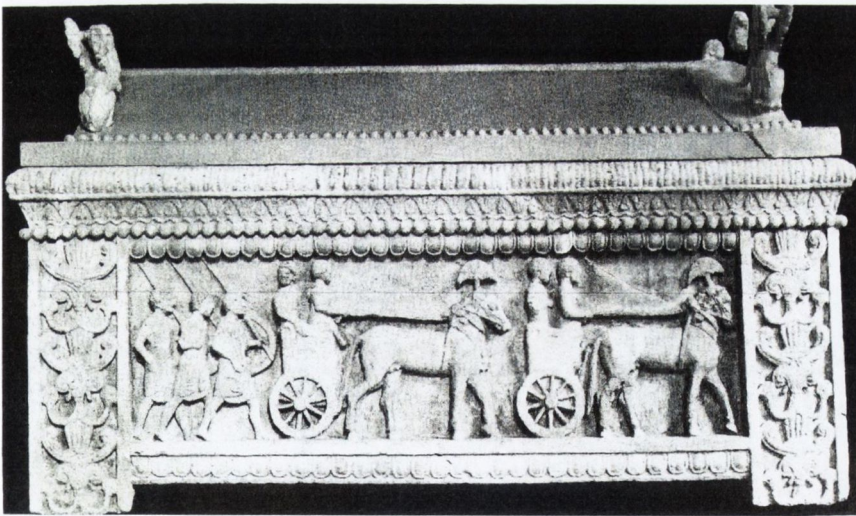
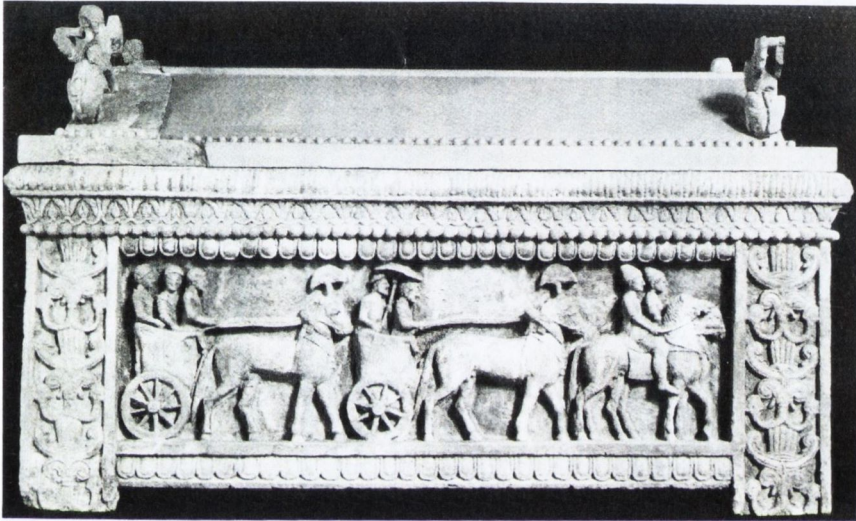


Fig. 143: Amathous sarcophagus – The Metropolitan Museum of Art, New York (Hermery 1981, plates, no. 80).



Fig. 144: Incense burner with a winged female – Kunsthistorisches Museum, Vienna (Bernhard-Walcher 1999, 202, no. 98).



Fig. 145: Hathoric capital bearing a panel showing a young man between two winged horses – Staatliche Museum, Berlin (Hermayr 1981, plates, no. 74).



Fig. 146: Worchester head – Museum of Art, Worcester (Hermay 1985, 675, fig. 19).



Fig. 147: The Palaipaphos 'priest-king' – Museum, Liverpool (Maier, fig. 40.2).



Fig. 148: Limestone head found at Golgoi representing a dignitary wearing a bull's mask – Louvre Museum, Paris (Caubet, Hermary and Karagerghis 1992, 140, no. 167).



Fig. 149: Limestone statue from Golgoi holding a bull's head – The Metropolitan Museum of Art, New York (Karageorghis 2000c, 249, no. 403).



Fig. 150: Amathous. Terracotta mask representing a horned and bearded male – British Museum, London (Karageorghis 1990, pl. 3, no. 1).

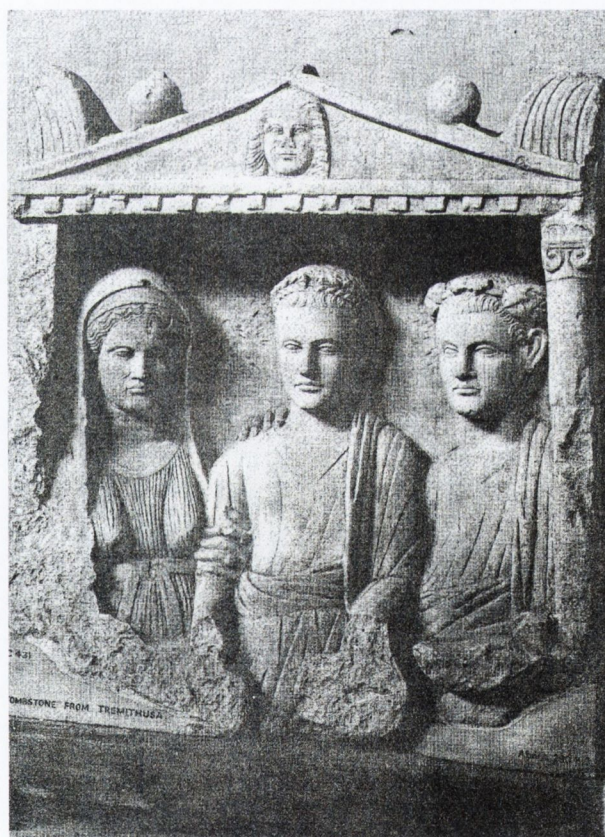


Fig. 151: Tremithousa grave stele – British Museum, London (Vermeule 1976, II, 17).

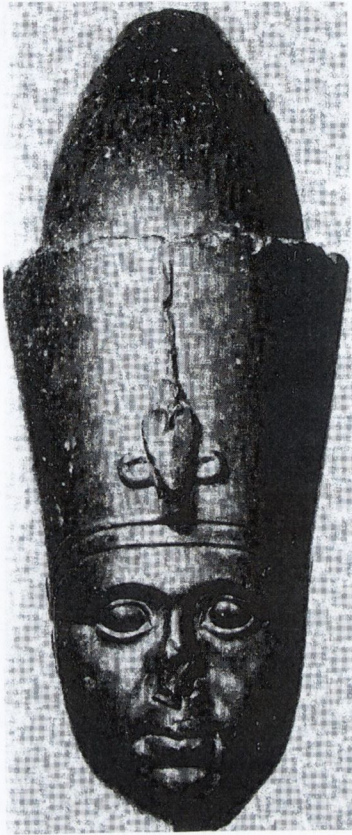


Fig. 152: Brussels Physkon – Musées Royaux d' Art et d' Histoire, Brussels (Smith 1988, pl. 47, fig. 1).



Fig. 153: Marble head of Alexander – British Museum, London (Pollitt 1986, 30, fig. 18).

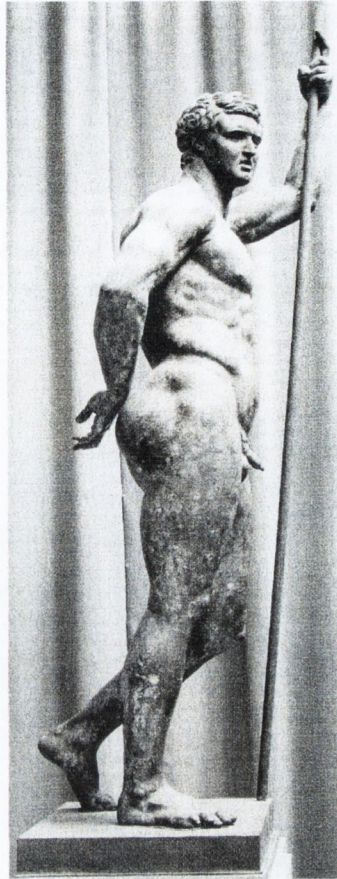


Fig. 154: Terme Ruler – Terme Museum, Rome (Smith 1988, pl. 32, fig. 2).



Fig. 155: Limestone votary – Metropolitan Museum of Art, New York (Connelly 1988, pl. 2, fig. 6).



Fig. 156: Limestone head from Arsos (Connelly 1988, pl. 15, fig. 55).

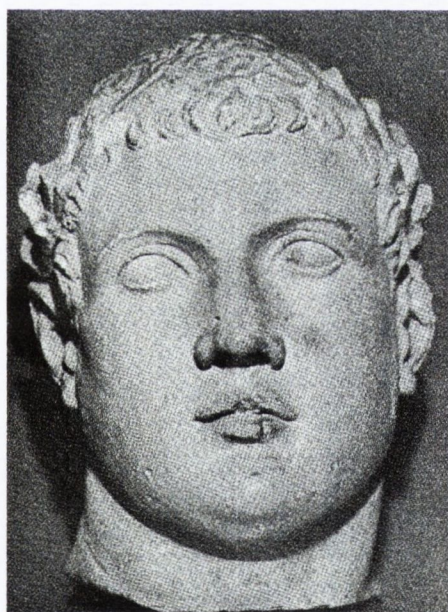


Fig. 157: Limestone head from Golgoi – Metropolitan Museum of Art, New York (Connelly 1988, pl. 34, figs 21-2).



Fig. 158: Louvre *Soter* – Louvre Museum, Paris (Smith 1988, pl. 34, fig. 3).



Fig. 159: Copenhagen *Soter* – Ny Carlsberg Glyptotek, Copenhagen (Smith 1988, pl. 34, fig. 4).



Fig. 160: Limestone sculpture from Voni (Connelly 1988, pl. 20, figs 74, 77).



Fig. 161: Coin of Ptolemy IV (Smith 1988, pl. 75, no. 10).



Fig. 162: Limestone head from Arsos (Connelly 1988, pl. 12, fig. 44).



Fig. 163: Gold coin depicting Arsinoe *Philadelphus* – Bank of Cyprus Cultural Foundation (Zapiti and Michaelidou 2007, 127, no. 21).

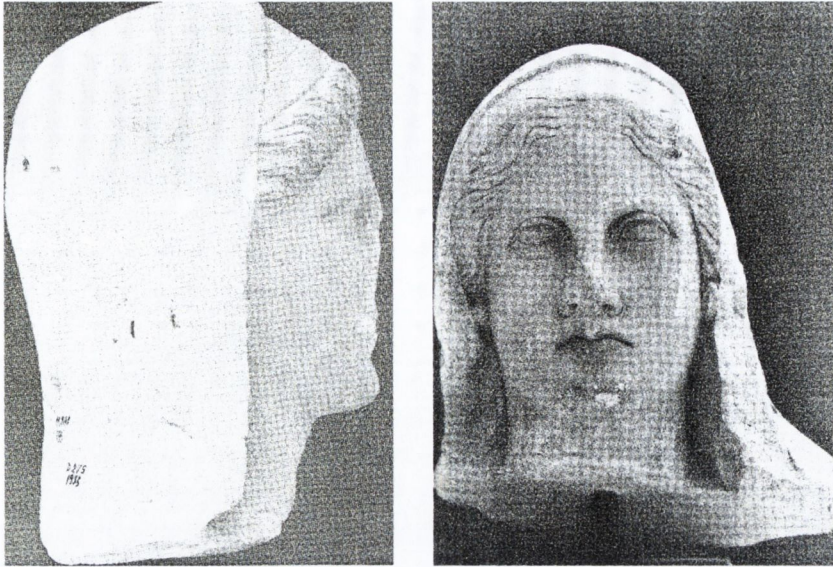


Fig. 164: Limestone sculptures from Arsos – District Museum, Larnaka (Connelly 1988, pl. 13, figs 47-8).



Fig. 165: Limestone sculpture – Pierides Museum, Larnaka (Karageorghis 2002, 201, no. 262).

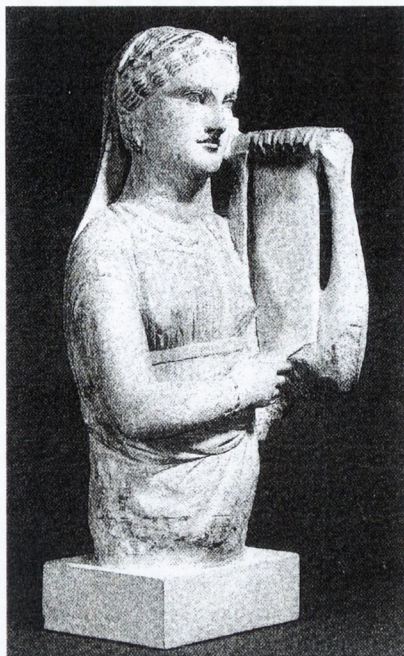


Fig. 166: Limestone sculpture from Idalion – British Museum, London (Tatton-Brown 1987, 17, fig. 12).



Fig. 167: Limestone sculpture from Voni (Connelly 1988, pl. 22, figs 82, 83, 85).

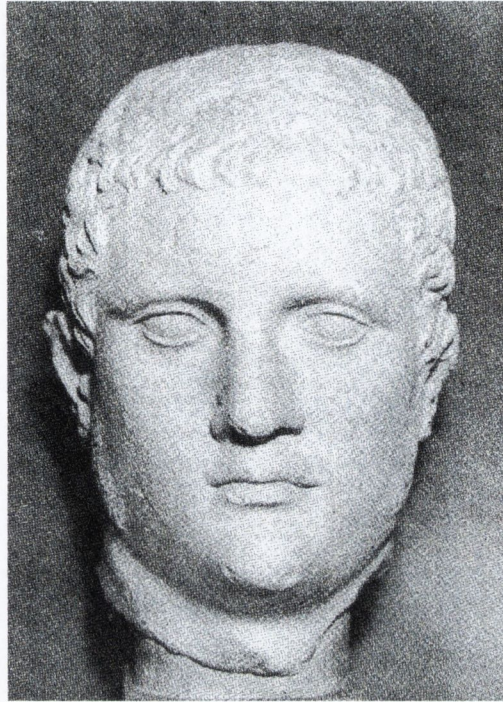


Fig. 168: Limestone sculpture from Golgoi – British Museum, London (Connelly 1988, pl. 28, no. 106).



Fig. 169: Limestone sculpture of unknown provenance – Ny Carlsberg Glyptotek, Copenhagen (Nielsen 2001, 132, no. 42).



Fig. 170: Marble head found in Amathous, sanctuary of Aphrodite – District Museum, Limassol (Hermay 1983, 293, fig. 6).



Fig. 171: Hirsch queen – private collection (Smith 1988, pl. 37, fig. 2).



Fig. 172: Kassel queen – Kassel, Staatliche Kunstsammlungen (Smith 1988, pl. 37, fig. 4).



Fig. 173: Soloi-Cholades. Marble sculpture, style I A (Westholm 1936, pl. II, find 532).



Fig. 174: Soloi-Cholades. Limestone sculpture, style I B (Westholm 1936, pl.XIII, find 522).



Fig. 175: Marble Ptolemaic queen portrait – Museum of Fine Arts, Boston (Comstock and Vermeule 1976, 84, no. 130).

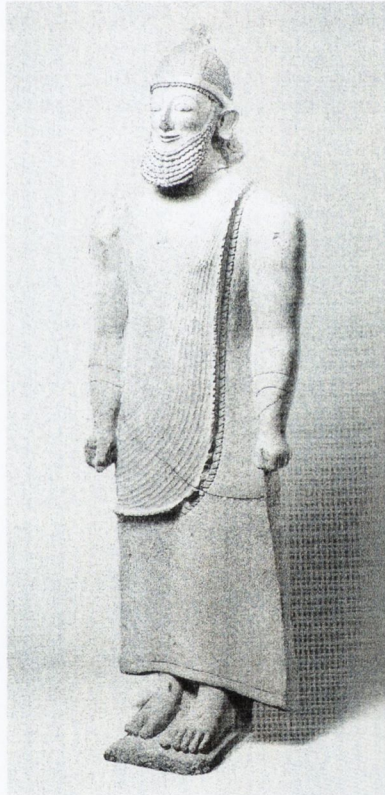


Fig. 176: Cypro-Achaic limestone sculpture – Metropolitan Museum of Art, New York (Karageorghis 2000c, 110, no. 173).



Fig. 177: Cypro-Achaic limestone sculpture, the 'priest' with the dove – Metropolitan Museum of Art, New York (Karageorghis 2000c, 109, no. 172).



Fig. 178: Cypro-Classical sculpture from Voni – British Museum, London. The wooden table in his left hand has an inscription that identifies the votary as Kilikas (Connelly 1989, 214).



Fig. 179: Cypro-Classical limestone sculpture – Metropolitan Museum of Art, New York (Karageorghis 2000c, 239, no. 336).



Fig. 180: Reconstructed view of a temenos at Idalion (Ohnefalsch-Richter, pl. LVI).