

National Parks and Wildlife Service

Conservation Objectives Series

Derragh Bog SAC 002201



An Roinn Tithíochta,
Rialtais Áitiúil agus Oidhreacht
Department of Housing,
Local Government and Heritage

**National Parks and Wildlife Service,
Department of Housing, Local Government and Heritage,
90 King Street North, Dublin 7, D07 N7CV, Ireland.
Web: www.npws.ie
E-mail: natureconservation@housing.gov.ie**

Citation:

**NPWS (2023) Conservation Objectives: Derragh Bog SAC 002201. Version 1.
National Parks and Wildlife Service, Department of Housing, Local Government
and Heritage.**

**Series Editors: Rebecca Jeffrey and Colin Heaslip
ISSN 2009-4086**

Introduction

The overall aim of the Habitats Directive is to maintain or restore the favourable conservation status of habitats and species of community interest. These habitats and species are listed in the Habitats and Birds Directives and Special Areas of Conservation and Special Protection Areas are designated to afford protection to the most vulnerable of them. These two designations are collectively known as the Natura 2000 network.

European and national legislation places a collective obligation on Ireland and its citizens to maintain habitats and species in the Natura 2000 network at favourable conservation condition. The Government and its agencies are responsible for the implementation and enforcement of regulations that will ensure the ecological integrity of these sites.

A site-specific conservation objective aims to define favourable conservation condition for a particular habitat or species at that site.

The maintenance of habitats and species within Natura 2000 sites at favourable conservation condition will contribute to the overall maintenance of favourable conservation status of those habitats and species at a national level.

Favourable conservation status of a habitat is achieved when:

- its natural range, and area it covers within that range, are stable or increasing, and
- the specific structure and functions which are necessary for its long-term maintenance exist and are likely to continue to exist for the foreseeable future, and
- the conservation status of its typical species is favourable.

The favourable conservation status of a species is achieved when:

- population dynamics data on the species concerned indicate that it is maintaining itself on a long-term basis as a viable component of its natural habitats, and
- the natural range of the species is neither being reduced nor is likely to be reduced for the foreseeable future, and
- there is, and will probably continue to be, a sufficiently large habitat to maintain its populations on a long-term basis.

Notes/Guidelines:

1. The targets given in these conservation objectives are based on best available information at the time of writing. As more information becomes available, targets for attributes may change. These will be updated periodically, as necessary.
2. An appropriate assessment based on these conservation objectives will remain valid even if the targets are subsequently updated, providing they were the most recent objectives available when the assessment was carried out. It is essential that the date and version are included when objectives are cited.
3. Assessments cannot consider an attribute in isolation from the others listed for that habitat or species, or for other habitats and species listed for that site. A plan or project with an apparently small impact on one attribute may have a significant impact on another.
4. Please note that the maps included in this document do not necessarily show the entire extent of the habitats and species for which the site is listed. This should be borne in mind when appropriate assessments are being carried out.
5. When using these objectives, it is essential that the relevant backing/supporting documents are consulted, particularly where instructed in the targets or notes for a particular attribute.

Qualifying Interests

** indicates a priority habitat under the Habitats Directive*

002201	Derragh Bog SAC
7110	Active raised bogs*
7120	Degraded raised bogs still capable of natural regeneration

Please note that this SAC is adjacent to Lough Kinale and Derragh Lough SPA (004061). See map 2. The conservation objectives for this site should be used in conjunction with those for the adjacent site as appropriate.

Supporting documents, relevant reports & publications

Supporting documents, NPWS reports and publications are available for download from: www.npws.ie/Publications

NPWS Documents

Year :	1990
Title :	The Raised Bogs of Ireland, their Ecology, Status and Conservation.
Author :	Cross, J.
Series :	Report to the Minister of State at the Department of Finance. The Stationery Office, Dublin
Year :	2017
Title :	National Raised Bog Special Areas of Conservation Management Plan 2017-2022
Author :	NPWS
Series :	Conservation Management Plan
Year :	2023
Title :	Derragh Bog SAC (Site Code: 002201) Conservation objectives supporting document - raised bog habitats V1
Author :	NPWS
Series :	Conservation objectives supporting document

Other References

Year :	2011
Title :	Review and revision of empirical critical loads and dose-response relationships. Proceedings of an expert workshop, Noordwijkerhout, 23-25 June 2010
Author :	Bobbink, R.; Hettelingh, J.P.
Series :	RIVM report 680359002, Coordination Centre for Effects, National Institute for Public Health and the Environment (RIVM)
Year :	2014
Title :	Nitrogen deposition and exceedance of critical loads for nutrient nitrogen in Irish grasslands
Author :	Henry, J.; Aherne, J.
Series :	Science of the Total Environment, 470-471: 216-223

Spatial data sources

Year : 2023
Title : Internal NPWS dataset
GIS Operations : Modelled potential habitat and ecotope polygons clipped to the SAC boundary. Expert opinion used as necessary to resolve any issues arising
Used For : 7110, 7120 (Map 3, Map 4)

Year : 2023
Title : Digital elevation model and drainage patterns dataset
GIS Operations : Dataset clipped to the SAC boundary. Expert opinion used as necessary to resolve any issues arising
Used For : 7110, 7120, (Map 5)

Conservation Objectives for : Derragh Bog SAC [002201]

7110 Active raised bogs*

To restore the favourable conservation condition of Active raised bogs* in Derragh Bog SAC, which is defined by the following list of attributes and targets:

Attribute	Measure	Target	Notes
Habitat area	Hectares	Restore area of active raised bog to 1ha, subject to natural processes	Active Raised Bog (ARB) habitat (0.2ha) has been identified on deep peat cutover at Derragh Bog SAC. The area of Degraded Raised Bog (DRB) at Derragh Bog is estimated to be 0.8ha. The long term target for ARB for the SAC is therefore 1ha. See raised bog supporting document for further details on this and following attributes
Habitat distribution	Occurrence	Restore the distribution and variability of active raised bog across the SAC. See map 3 for distribution of potential ARB	The ARB habitat at Derragh Bog SAC comprises active flush systems. DRB comprises several areas of deep peat revegetated cutover where the hydrology has been adversely affected by peat cutting and drainage, but which are capable of regeneration to ARB within 30 years (see area target above)
High bog area	Hectares	No decline in extent of high bog, necessary to support the development and maintenance of active raised bog. See map 4	The area of high bog within Derragh Bog SAC in 2014 (latest figure available) was 8.4ha (NPWS, 2017)
Hydrological regime: water levels	Centimetres	Restore appropriate water levels throughout the site	For DRB to be restored to ARB, mean water level needs to be near or above the surface of the bog lawns for most of the year. Seasonal fluctuations should not exceed 20cm, and should only be 10cm below the surface, for very short periods of time. Open water is often characteristic of soak systems
Hydrological regime: flow patterns	Flow direction; slope	Restore, where possible, appropriate high bog topography, flow directions and slopes. See map 5 for current situation	The restoration of DRB to ARB depends on mean water levels being near or above the surface of bog lawns for most of the year. Long and gentle slopes are the most favourable to achieve these conditions. Changes to flow directions due to subsidence of bogs can radically change water regimes and cause drying out of higher quality DRB areas and soak systems
Transitional areas between high bog and adjacent mineral soils (including cutover areas)	Hectares; distribution	Restore adequate transitional areas to support / protect active raised bog ecosystem and the services it provides	This bog is an example of a floodplain raised bog which borders two lakes, Lough Kinale to the west and Derragh Lough to the south, the River Inny to the east and wet agricultural grassland to the north. There is a full transition from the high bog to cutover bog, to semi-natural birch woodland, fen, swamp and lake
Vegetation quality: central ecotope, active flush, soaks, bog woodland	Hectares	Restore 0.5ha of central ecotope/active flush/soaks/bog woodland as appropriate as appropriate	At least 50% of ARB habitat should comprise high quality ARB habitat such as central ecotope, active flush, and bog woodland. Target area of active raised bog for the site has been set at 1ha (see area target above)
Vegetation quality: microtopographical features	Hectares	Restore adequate cover of high quality microtopographical features	There is a poor presence of hummock and hollow microtopography on Derragh Bog SAC due to the absence of ARB from the high bog. Nevertheless, the positive result of the implementation of restoration works is expected to not only increase the extent of ARB on the old deep peat cutover areas but also improve the habitat's quality
Vegetation quality: bog moss (<i>Sphagnum</i>) species	Percentage cover	Restore adequate cover of bog moss (<i>Sphagnum</i>) species to ensure peat-forming capacity	<i>Sphagnum</i> cover varies naturally across raised bogs in Ireland with relatively high cover in the east to lower cover in the west. Hummock forming species such as <i>Sphagnum austinii</i> are particularly good peat formers. <i>Sphagnum</i> cover and distribution also varies naturally across a site
Typical ARB species: flora	Occurrence	Restore, where appropriate, typical active raised bog flora	Typical flora species include widespread species, as well as those with more restricted distributions but typical of the habitat's subtypes or geographical range

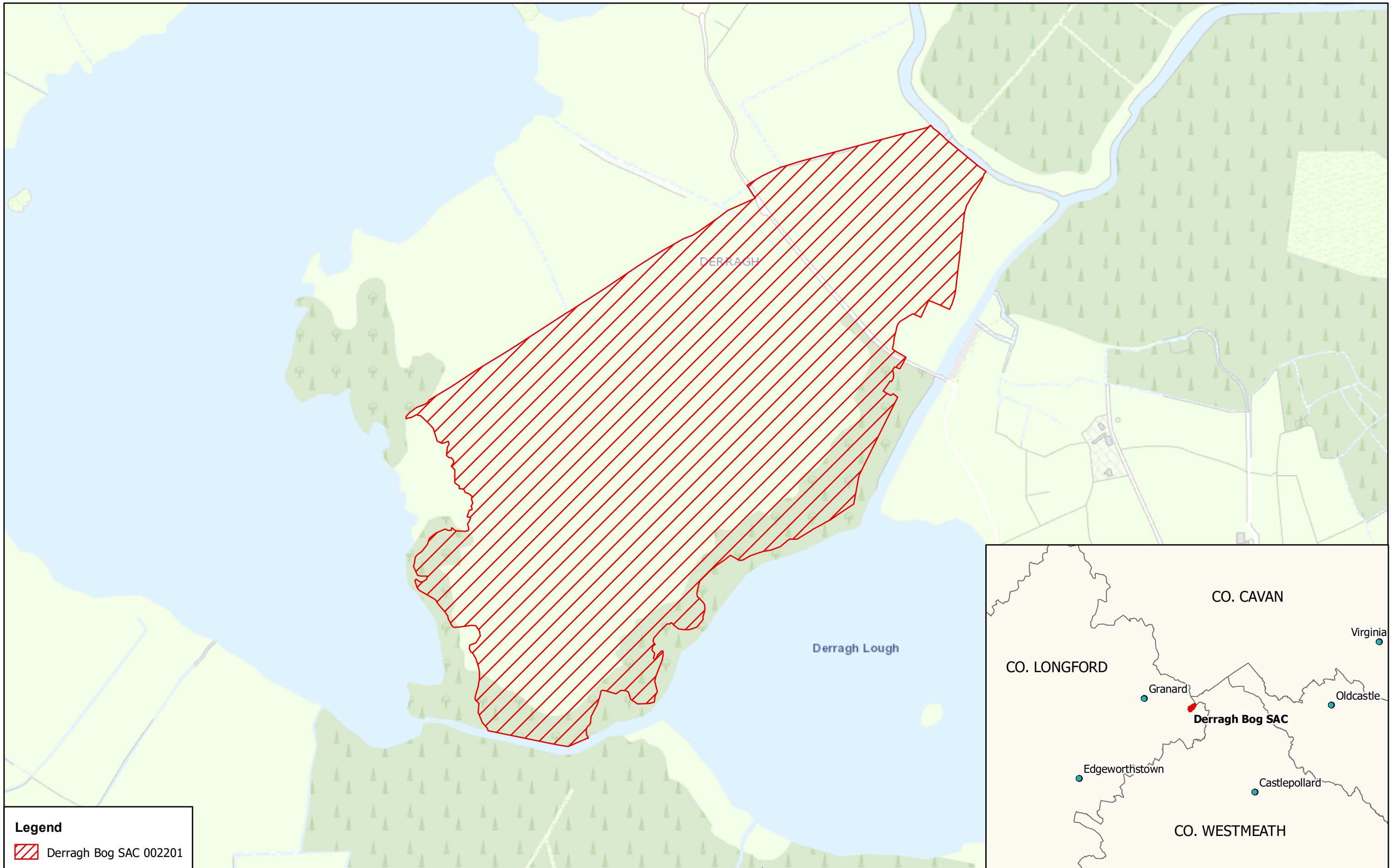
Typical ARB species: fauna	Occurrence	Restore, where appropriate, typical active raised bog fauna	Typical fauna species include widespread species, as well as those with more restricted distributions but typical of the habitat's subtypes or geographical range
Elements of local distinctiveness	Occurrence	Maintain features of local distinctiveness, subject to natural processes	Derragh Bog SAC is a site of conservation significance comprising ARB, a rare habitat in the EU and one that is becoming increasingly scarce and under threat in Ireland. Although Derragh Bog is a small example of a raised bog, its development in close association with the lakes and their floodplains and the relatively intact wetland transition between the two systems make it unusual in a western European context. In addition its location towards the north-eastern extreme of the range of raised bogs in Ireland and its close proximity to Moneybeg and Clareisland Bogs SAC (002340) increases its ecological importance
Negative physical indicators	Percentage cover	Negative physical features absent or insignificant	Negative physical indicators include: bare peat, algae dominated pools and hollows, marginal cracks, tear patterns, subsidence features such as dry mineral mounds/ridges emerging or expanding, and burning evidence
Vegetation composition: native negative indicator species	Percentage cover	Native negative indicator species at insignificant levels	Indicators of disturbance on a raised bog include species indicative of drying out conditions such as abundant <i>Nartheicum ossifragum</i> and <i>Trichophorum germanicum</i> ; <i>Eriophorum vaginatum</i> forming tussocks; abundant <i>Sphagnum magellanicum</i> in pools previously dominated by species typical of very wet conditions (e.g. <i>Sphagnum cuspidatum</i>). Indicators of frequent burning events include abundant <i>Cladonia floerkeana</i> and high cover of <i>Carex panicea</i> (particularly in the true midlands raised bog type)
Vegetation composition: non-native invasive species	Percentage cover	Non-native invasive species at insignificant levels and not more than 1% cover	Non-native invasive species that can commonly occur on raised bog habitats include: <i>Pinus contorta</i> , <i>Rhododendron ponticum</i> , and <i>Sarracenia purpurea</i> (Cross, 1990). <i>Pinus contorta</i> has been reported on the bog
Air quality: nitrogen deposition	kg N/ha/year	Air quality surrounding bog close to natural reference conditions. The total N deposition should not exceed 5kg N/ha/yr	Change in air quality can result from fertiliser drift; adjacent quarry activities; or other atmospheric inputs. The critical load range for ombrotrophic bogs has been set as between 5 and 10kg N/ha/yr (Bobbink and Hettelingh, 2011). The latest N deposition figures for the area around Derragh Bog suggests that the current level is approximately 20.0kg N/ha/yr (Henry and Aherne, 2014)
Water quality	Hydrochemical measures	Water quality on the high bog and in transitional areas close to natural reference conditions	Water chemistry within raised bogs is influenced by atmospheric inputs (rainwater). However, within soak systems, water chemistry is influenced by other inputs such as focused flow or interaction with underlying substrates. Water chemistry in areas surrounding the high bog varies due to influences of different water types (bog water, regional groundwater, and runoff from surrounding mineral lands)

Conservation Objectives for : Derragh Bog SAC [002201]


7120 Degraded raised bogs still capable of natural regeneration


The long-term aim for Degraded raised bogs still capable of natural regeneration is that its peat-forming capability is re-established; therefore, the conservation objective for this habitat is inherently linked to that Active Raised Bogs (7110) and a separate conservation objective has not been set in Derragh Bog SAC

Attribute	Measure	Target	Notes
-----------	---------	--------	-------



Legend

 Derragh Bog SAC 002201




An tSeirbhís Páirceanna Náisiúnta agus Fiadhúlra
National Parks and Wildlife Service

**MAP 1:
DERRAGH BOG
CONSERVATION OBJECTIVES
SAC DESIGNATION**

Map to be read in conjunction with the NPWS Conservation Objectives Document


**SITE CODE:
SAC 002201; version 3
CO. LONGFORD**

0 50 100 200 Metres

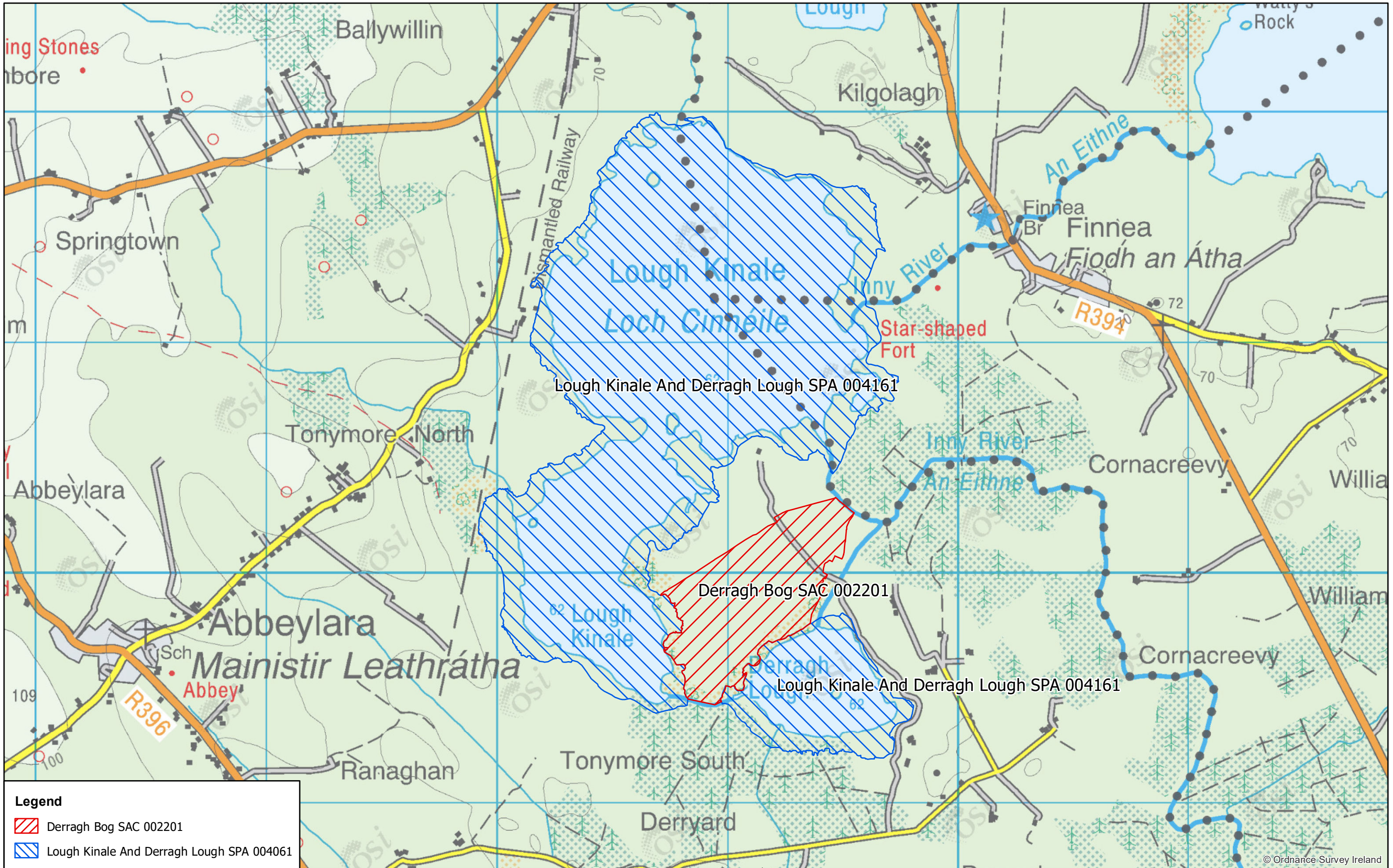


The mapped boundaries are of an indicative and general nature only. Boundaries of designated areas are subject to revision.
Ordnance Survey of Ireland Licence No OSI-NMA-014. © Ordnance Survey of Ireland Government of Ireland

Níl sna teorainneacha ar na léarscáileanna ach nod garshuíomhach ginearálta. Féadfar athbheithníthe a déanamh ar theorainneacha na gceantar comharthaíthe. Suirbhéarachta Ordonáis na hÉireann Ceadúnas Uimh OSI-NMA-014. © Suirbhéarachta Ordonáis na hÉireann Rialtas na hÉireann

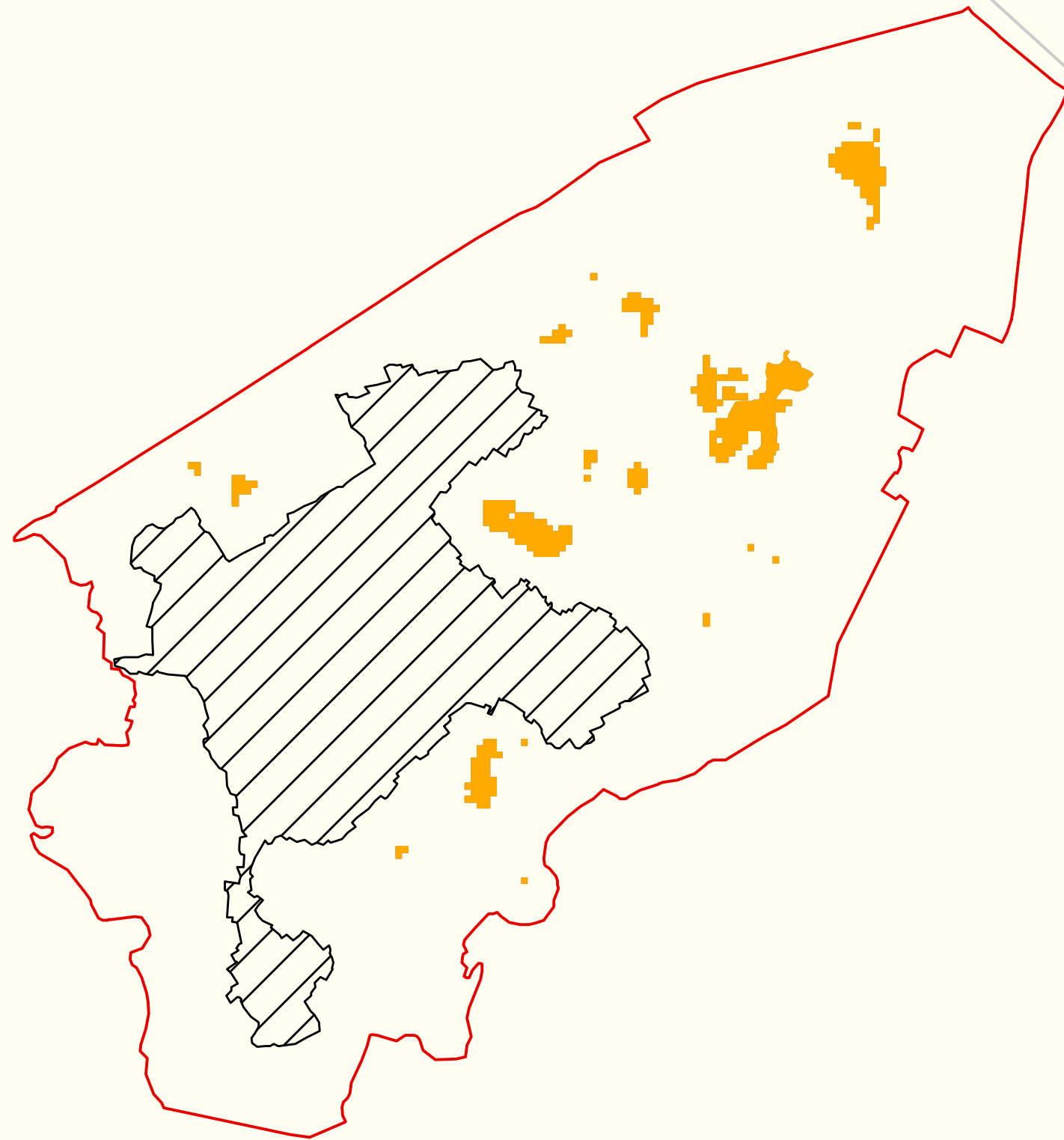


Date: April 2023







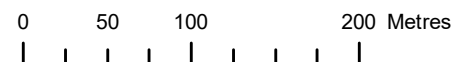
Legend

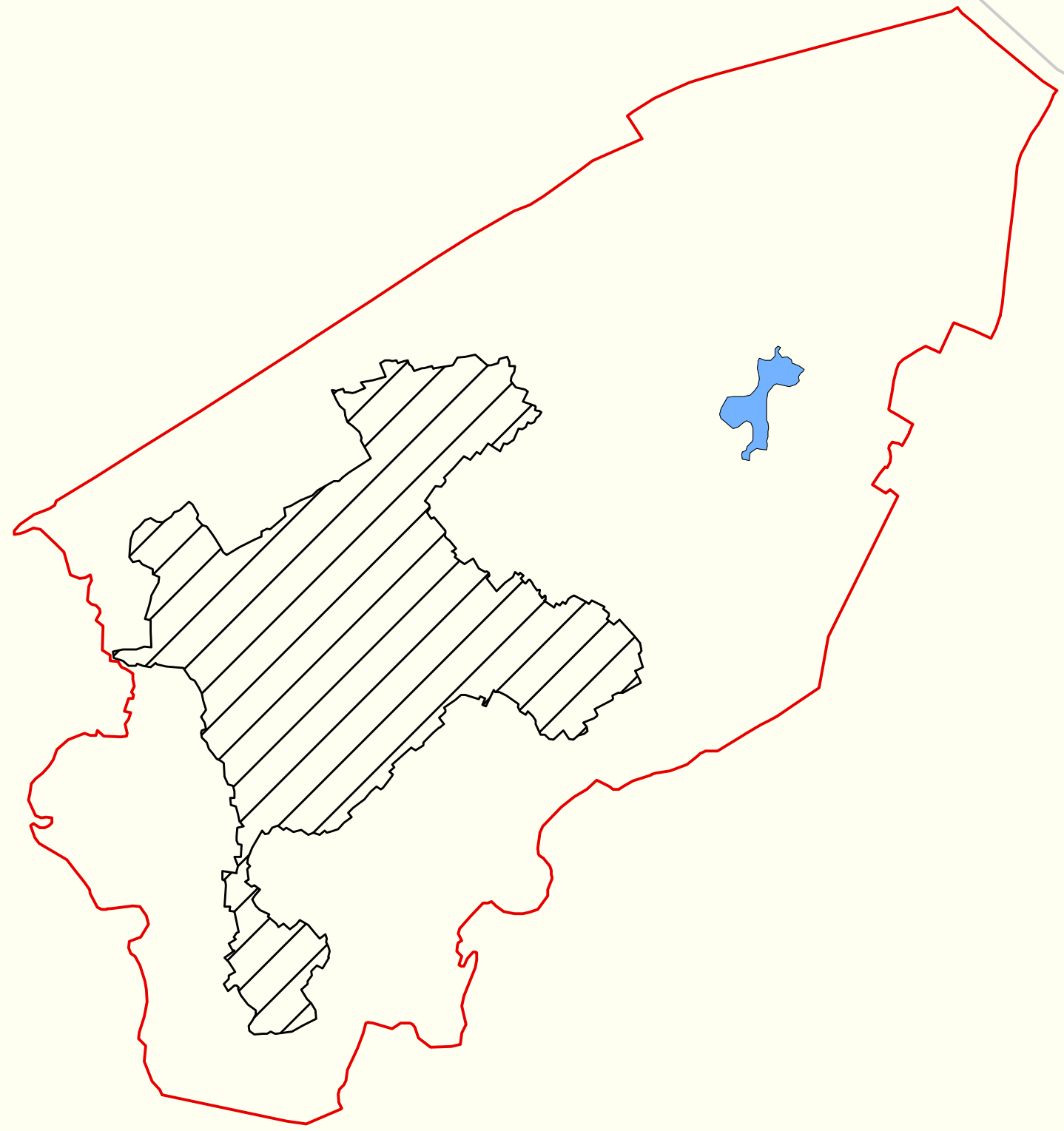
- Derragh Bog SAC 002201
- Lough Kinale And Derragh Lough SPA 004061







Legend

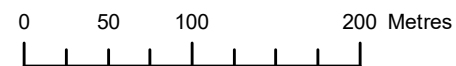
-  High Bog Boundary
-  Potential 7110 Active Raised Bog
-  Derragh Bog SAC 002201
-  County Boundary

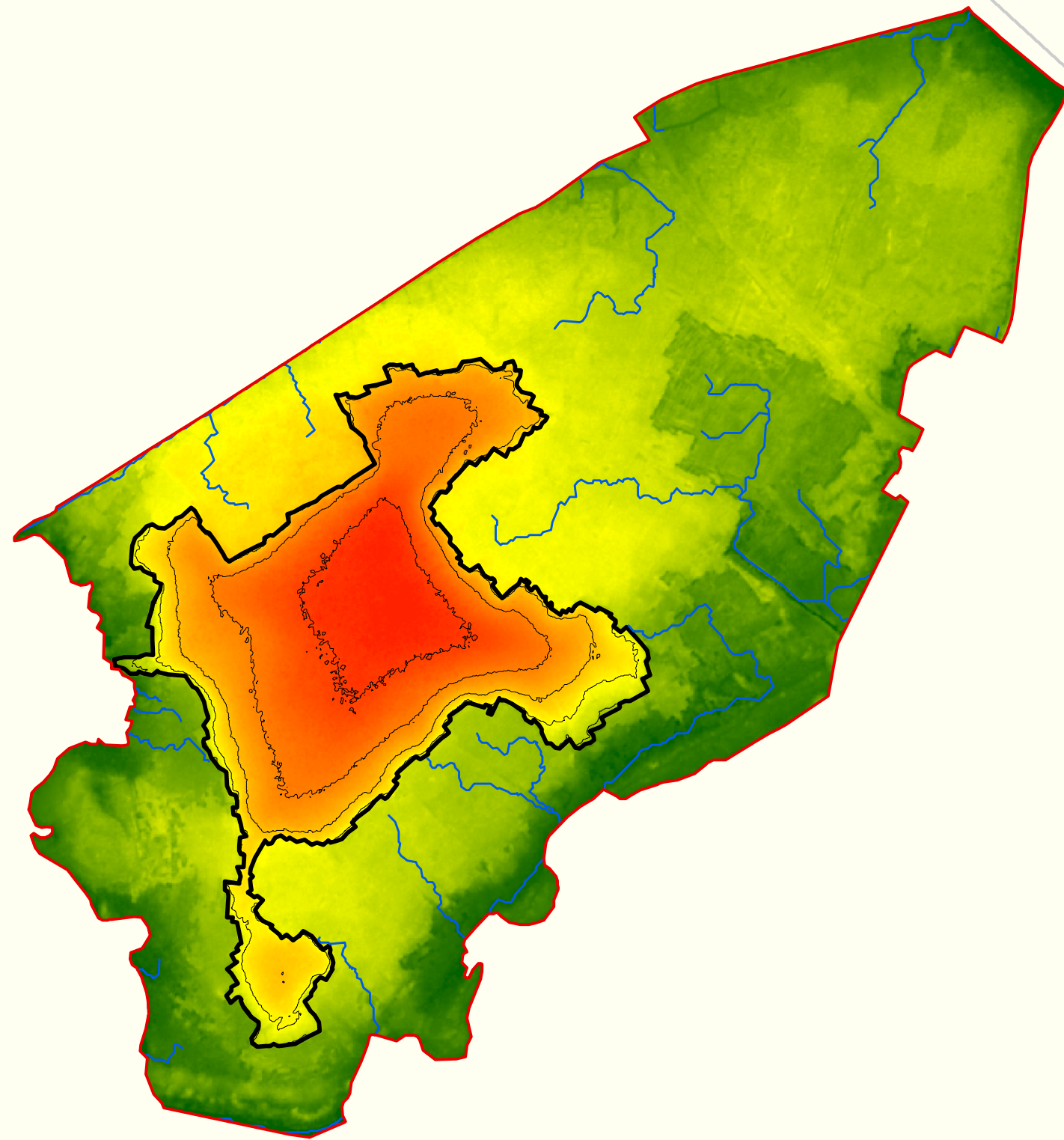






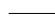




Legend

-  High Bog Boundary
-  Derragh Bog SAC 002201
-  County Boundary
- Active Raised Bog Ecotopes**
-  Active Flush





Legend

-  High Bog Boundary
 -  Drainage Patterns
 -  Contours
 -  Derragh Bog SAC 002201
 -  County Boundary
- Elevation
-  75.88 m
 -  59.64 m

