

Symphony

2024

Lucy Doyle





Prelude 91 x 76 cm Oil on canvas

Front cover: Flower duet 91 x 122 cm Oil on canvas

Symphony

New Paintings 2022 - 2024

Lucy Doyle

📍 lucydoyleartist

www.lucydoyle.com

First Published in 2024
by Tigroney Press
Avoca
Co. Wicklow

Typeset by Tigroney Press

All rights reserved
©Lucy Doyle, 2024

The right of Lucy Doyle to be identified as author of this work has been asserted in accordance with Section 77 of the Copyright, Designs and Patents Act 1988

This book is sold subject to the condition that it shall not, by way of trade or otherwise, be lent, resold, hired out or otherwise circulated either in print or electronic format without the publisher's prior consent in any form of binding or cover other than that in which it is published and without a similar condition including this condition being imposed on the subsequent purchaser.

The images are the copyright of Lucy Doyle and may not be reproduced as a whole or in part in any format without permission of the artist.

A CIP record for this book is available from the British Library



ISBN 978-1-912290-34-5 (ebook)

Symphony

New paintings 2022-2024

When I started working on this collection in 2022, I envisaged four large paintings each symbolising a season, my idea of a visual symphony. The other works augment and develop this theme of celebrating the year in a colourful and textural way. *Serenade to Dahlias* is the first large canvas I painted for this collection back in autumn 2022 when these flowers were at their best. I tried to convey a sense of security, joy and companionship with this composition. *Winter Kitchen* was my large winter painting 122x152cm. Here I was celebrating the warm hub of a kitchen in the coldest and darkest of months. I played with the warm rusty pinks and burnt oranges of the copper kitchen utensils contrasting these warm colours with the cool earth greens of the tablecloth and shelves. The low but beguiling light coming from the moon through the window and the flickering candlelight are devices I have used to add to the sense of intimacy and drama. *River Song* is the largest painting from this collection at 152 x 182 cm and is what I call a retreat painting where I set out to create a place of peace and tranquillity of pure painterly escapism, away from all the noise and chaos of daily life. It is of a reclining female figure in a woodland setting with a babbling brook. I also set out to create a retreat painting with *Summer Interlude* 122 x 152 cm of a reclining female figure in an interior setting but with the same object in mind; that of taking time out to rest and contemplate the moment.

Both my daughters are my muses and I often use two female forms conversing with each other over a table and I am sure this has been inspired by years of watching them chat over a cup of tea during the years they were at home. Now they have young families of their own I feel drawn to the mother and child theme as can be seen in *Bedtime Story* and *Autumn Kitchen*.

Summer Song is an ode to Dod Proctor as she is one of my favourite painters and her painting, *Girl with a parrot*, was the inspiration behind my painting. Sometimes the flowers that are growing around me are so dramatic and visually stimulating that I will often do a portrait of a standalone vase of flowers. These compliment and support my figurative work like a running theme throughout this collection and help me to document the seasons as they pass. Over the last 5 years or so, I have painted a series of small flower paintings especially commissioned by the Doorway Gallery for their Christmas Show. This year they are in two collections; *Flower Notes* and *Floral Notes* painted in 2022 and 2023 respectively.

All my subject matter is a means to an end and that is to work and experiment with paint, colour and texture; always pushing the boundaries of what this medium can do. For me it's a continuously evolving challenge and a new experience each time I start a painting.

Lucy Doyle



Easter lit tulips 61 x 46 cm Oil on canvas



Tulip chorus 91 x 91 cm Oil on canvas



Dahlias red 61 x 46 cm Oil on canvas



Lemon tea 100 x 120 cm Oil on canvas



Spring table 76 x 91 cm Oil on canvas



Summer song 122 x 91 cm Oil on canvas





Floral chorus blue 61 x 46 cm Oil on canvas

Previous Page: **River song** 152 x 182 cm Oil on canvas



Moonlit tulips 61 x 46 cm Oil on canvas



Fruit salad 76 x 91 cm Oil on canvas



Bedtime story 91 x 76 cm Oil on canvas



Floral chorus May 71 x 71 cm Oil on canvas



Floral chorus June 91 x 91 cm Oil on canvas





Above:

Summer table 71 x 71 cm Oil on canvas

Centre:

Summer interlude 122 x 152 cm Oil on canvas



Floral chorus August 91 x 76 cm Oil on canvas



Floral chorus Pink 71 x 61 cm Oil on canvas



Dahlia chorus 91 x 91 cm Oil on canvas





Dahlias yellow 61 x 46 cm Oil on canvas

Previous page: ***Winter kitchen*** 122 x 152 cm Oil on canvas



Serenade to dahlias 152 x 152 cm Oil on canvas



Dahlias green 91 x 76 cm Oil on canvas



Study in green 100 x 120 cm Oil on canvas



Autumn kitchen 91 x 91 cm Oil on canvas



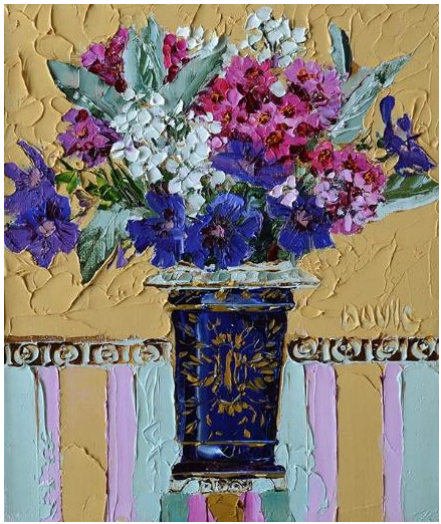
Floral chorus September 122 x 122 cm Oil on canvas



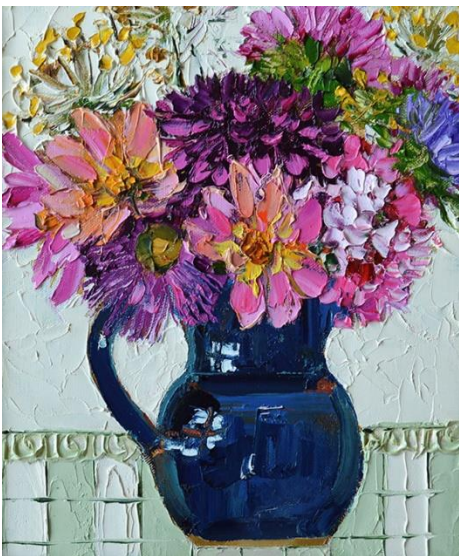
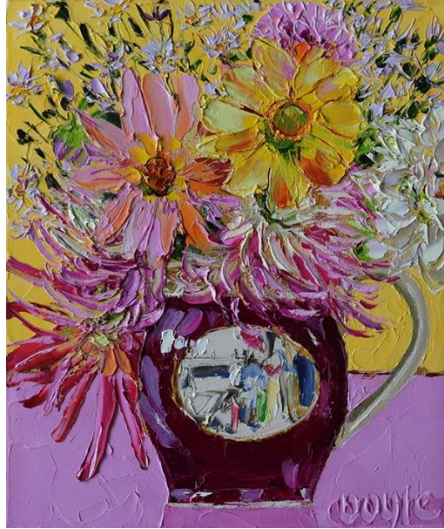
Flower notes 1-6 30 x 25 cm Oil on canvas



Flower notes 7-11 30 x 25 cm Oil on canvas



Floral notes 1-6 30 x 25 cm Oil on canvas



Floral notes 7-11 30 x 25 cm Oil on canvas



www.lucydoyle.com