

# Monthly Weather Bulletin

No. 276  
APRIL 2009



*Despite being a wet month everywhere, April sunshine totals were also higher than normal except in the south- pictured above are sunny conditions in Dublin's Botanic Gardens. The month was also a mild one throughout, with little or no air frost.*

## WARMER, WETTER THAN NORMAL EVERYWHERE; VERY WET IN SOUTH

After a relatively dry start to the year in most places, April was a wet month everywhere and it was particularly wet in the south and southwest of the country. There were short spells of dry weather at the start and again after mid-month, but most of the month was dominated by slow-moving frontal systems over the country, which brought heavy falls at times. Winds were

generally between southeasterly and southwesterly in direction, giving mild conditions throughout almost all of the month, but many days were also dull. Rainfall totals of between 64mm and 183mm were around 75% more than normal generally and were over twice the April normal in parts of the south, midlands and northwest. It was the wettest April for



### INSIDE



*Storm produces record rainfall at Belmullet- page 2*

Wind & Elements .....	4
Marine & Pressure .....	5
Agmet /Lab .....	6

Diary .....	8
Rainfall .....	10
Temperature .....	12
Sunshine .....	14
World weather .....	15
Global weather summary for 2008 ..	16



Produced by Met Éireann,  
Glasnevin Hill, Dublin 9.  
Annual subscription 80 euro



For more information-  
tel: +353-1-8064260  
fax: +353-1-8064216  
climate.enquiries@met.ie  
www.met.ie/climate

Notes on the tables and map showing location of stations appear in January issue

between 10 and 16 years at several stations and the wettest since 1966 at Cork Airport. There were heavy daily falls during the periods 7th to 10th and 24th to 27th, some of which were accompanied by thunder; Belmullet's daily fall of 25.9mm on the 7th was its highest for April in over 50 years of record. Between 14 and 18 wetdays were measured at most stations (days with 1mm or more rainfall), compared with the normal range for April of between 10 and 14. Mean air temperatures for the month were around a degree higher than normal everywhere; most stations recorded no air frost during the month and it was only slight when it did occur. Sunshine totals were a little higher than normal over the northern half of the country, but it was a dull month in the south and southwest, where totals were the lowest for April since 1996. By far the

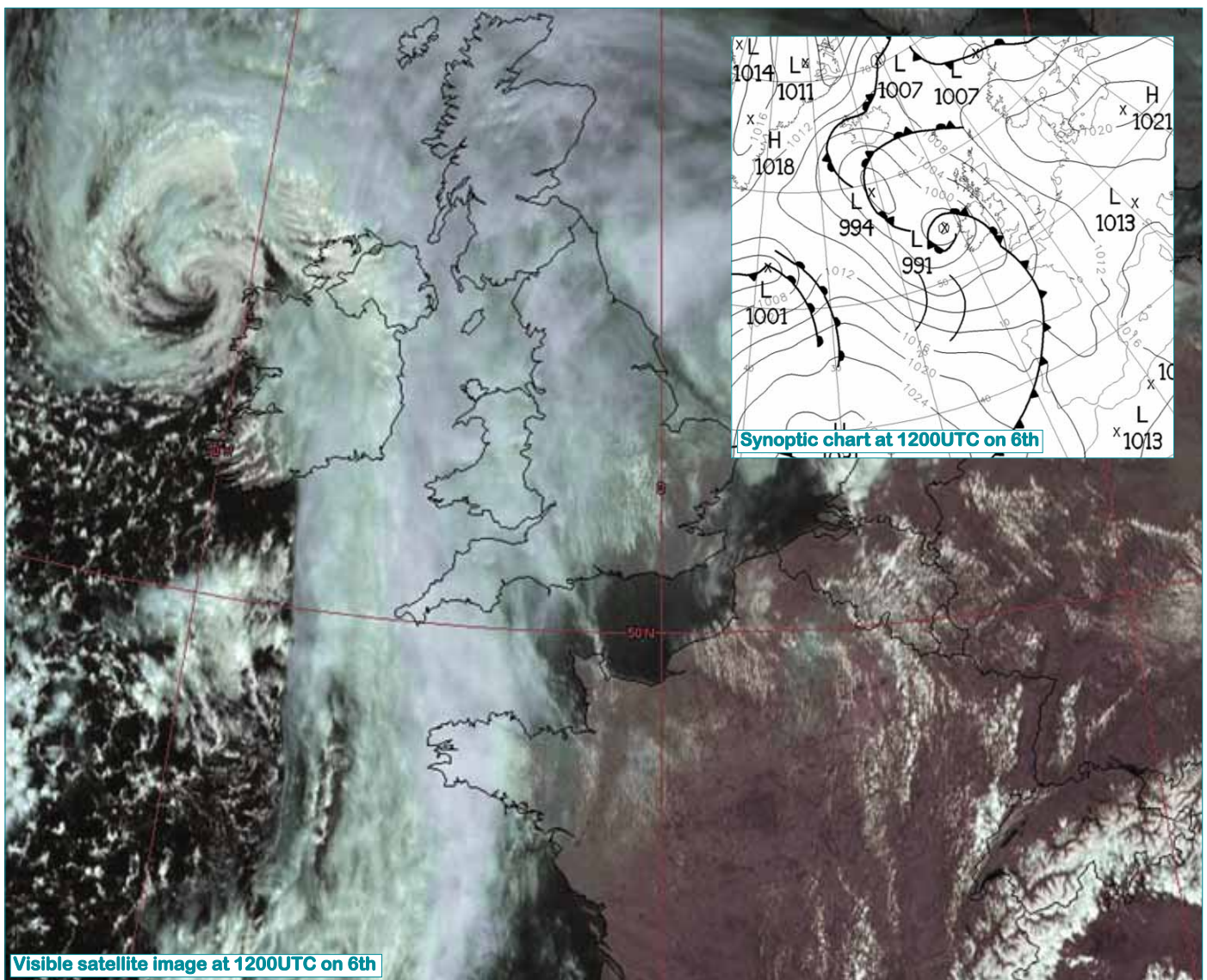
sunniest period of the month was between the 18th and 20th, when over 10 hours of daily sunshine were widely recorded.

**1st to 2nd:** High pressure centred just east of Ireland brought a dry and mainly clear start to the month, with light southeasterly winds. Daytime temperatures were above normal after cool nights at inland stations.

**3rd to 16th:** Slow-moving Atlantic depressions brought wet and occasionally windy conditions over Ireland. Rain or showers were recorded each day and were heaviest over the western half of the country, accompanied by hail or thunder at times. Heaviest falls were measured in the period 6th to 9th, but amounts in eastern areas were slight. Winds were generally south to southwesterly in direction, with gale gusts in many places between the 6th

#### Below

A depression centred close to the northwest coast between the 6th and 8th produced gale force winds near the west coast, while its associated fronts brought heavy rain in most areas; Belmullet's daily fall of 25.9mm on the 7th was its highest for April in over 50 years of record.





**Above**  
 The month's strongest winds were in the period between the 6th and 9th, with low pressure centred near the west coast- see opposite. The wind brought good kitesurfing conditions on the 7th at Lahinch, Co. Clare.  
 (picture Irish Examiner)

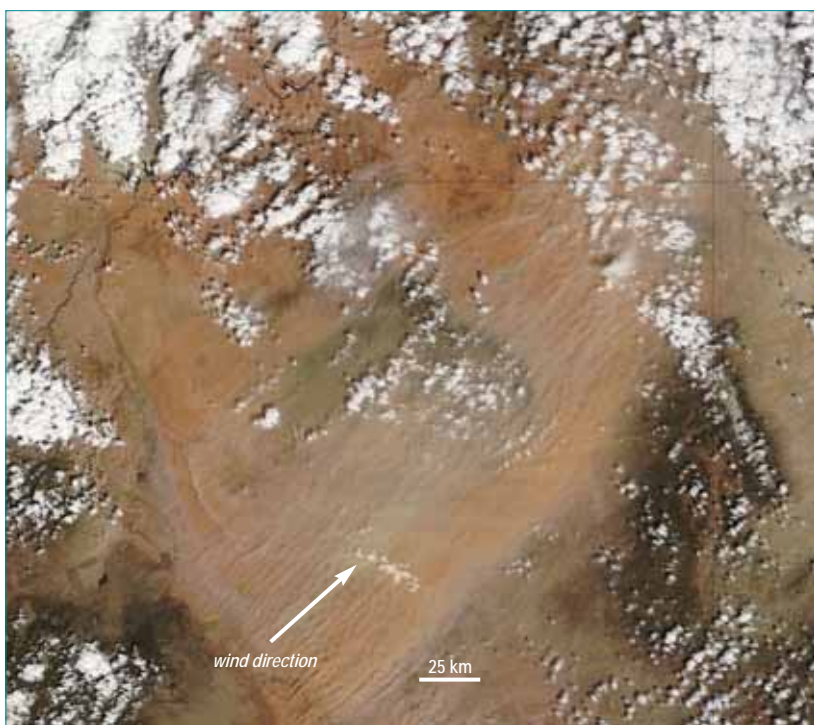
and 10th as a depression crossed the north of the country. The period was relatively mild but dull, with little diurnal variation in temperature during most of the period.

**17th to 22nd:** An anticyclone to the north of Ireland brought dry and sunny conditions to most areas. Daytime temperatures rose well above normal over

the western half of the country, but eastern areas were cooler due to light east to southeasterly breezes.

**23rd to 30th:** Unsettled weather returned as low pressure again moved close to the country. All areas received heavy rain at times, and showers or longer spells of rain were thundery in places. Temperatures were a little higher than normal, with cloudy conditions on most days.

**Wind and elements:** Mean windspeeds for the month were near or above normal, varying between 7 and 11 knots generally (13 and 20km/h). They were strongest in the period 6th to 9th; the month's highest gust of 52 knots (96km/h) was recorded at Shannon Airport on the 7th, its highest April gust since 2002. Hail was observed on the 4th, 7th, 10th and 27th, while there were no reports of snow. Thunderstorms were most widespread on the 10th, 15th, 25th and 27th, with isolated thunder on



**Left**  
 A MODIS satellite image of a dust storm which struck northeastern Arizona on the 3rd. Winds of over 145km/h near Meteor Crater raised considerable amounts of dust, severely reducing visibility and forcing the temporary closure of Interstate 40. (picture courtesy NASA Earth Observatory)

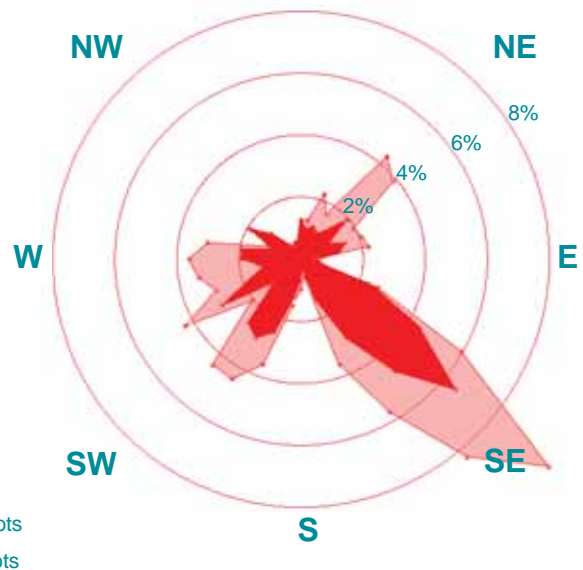
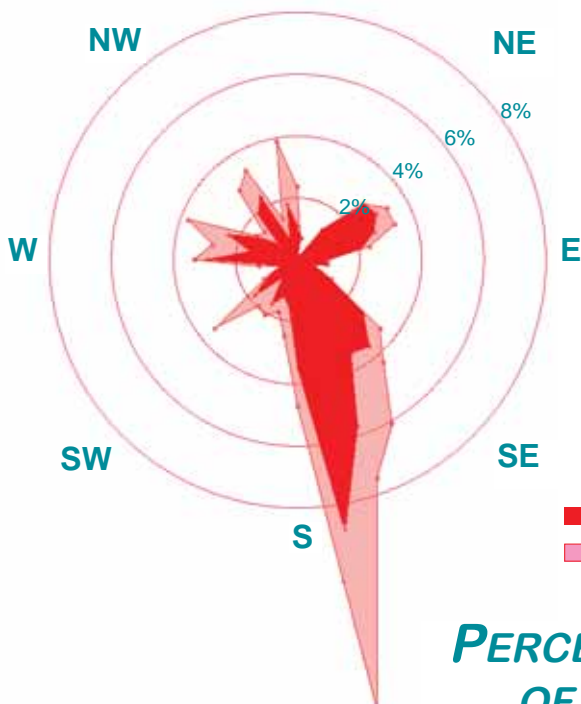
County / Station	WIND (KNOTS)										ELEMENTS				
	Mean speed	Max. dir.	10-min. speed	mean date/hour	Max. dir.	Gust speed	date/time	Days with gales	gale gusts	Hours with gale gusts	Snow	Snow Lying	Hail	Thunder	Fog
<b>CO. CARLOW</b> Carlow (Oak Park)	7.3	250°	33	7/23	250°	44	7/2320	0	3	27					
<b>CO. CAVAN</b> Ballyhaise	6.7	180°	20	9/10	160°	34	9/1445	0	1	2					
<b>CO. CLARE</b> Shannon Airport	9.0	260°	36	7/21	260°	52	7/2037	1	2	9	0	0	1	0	2
<b>CO. CORK</b> Roche's Point	10.9	180°	35	7/16	170°	46	7/1643	1	5	60					
Cork Airport	9.0	330°	28	25/09	340°	41	25/0507	0	5	15	0	0	1	0	12
<b>CO. DONEGAL</b> Malin Head	12.1	070°	32	15/22	150°	43	6/1224	0	10	43	0	0	2	0	0
<b>CO. DUBLIN</b> Dublin Airport	9.6	260°	36	8/01	260°	49	8/0115	1	2	10	0	0	0	1	3
Casement Aerodrome	8.6	250°	36	8/01	250°	48	7/2359	2	3	20	0	0	0	0	1
					250°	48	8/0001								
<b>CO. KERRY</b> Valentia Observatory	8.8	220°	28	7/18	120°	44	6/0234	0	6	16	0	0	1	0	0
<b>CO. MAYO</b> Belmullet	11.0	170°	34	6/12	170°	51	6/1151	3	11	48	0	0	1	0	0
		180°	34	22/12											
Knock Airport	9.4	320°	28	7/22	320°	42	7/2159	0	2	5	0	0	2	0	9
<b>CO. OFFALY</b> Birr	7.1	250°	26	7/22	250°	40	7/2137	0	1	4		0			
<b>CO. WESTMEATH</b> Mullingar	6.2	270°	20	7/23	270°	33	7/2344	0	0	0					
<b>CO. WEXFORD</b> Johnstown Castle	6.8	170°	20	7/18	170°	39	7/1843	0	2	6					
		160°	20	9/15											

Valentia Observatory

Dublin Airport

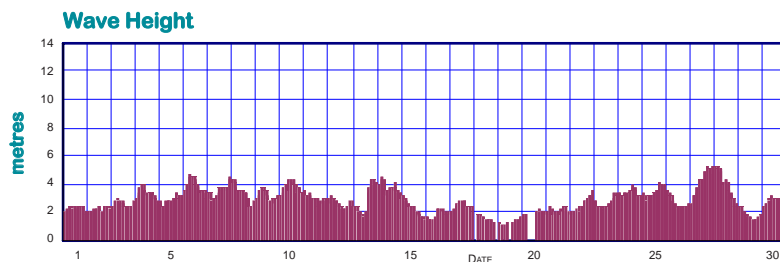
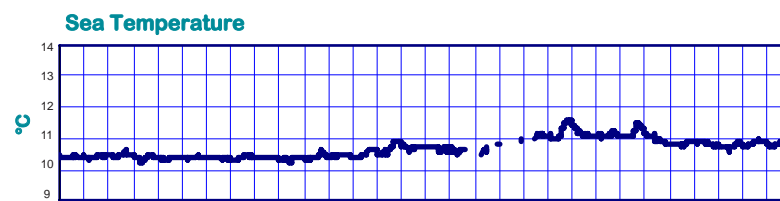
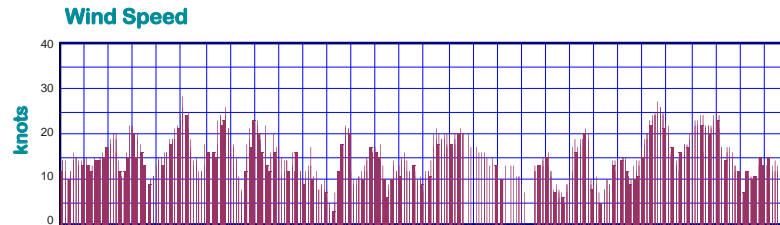
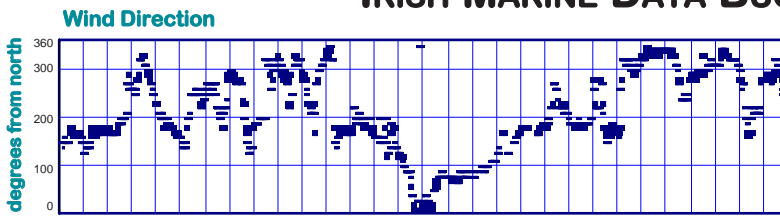
Calm: 0.6% N

Calm: 0.0% N



PERCENTAGE FREQUENCY OF WIND DIRECTION

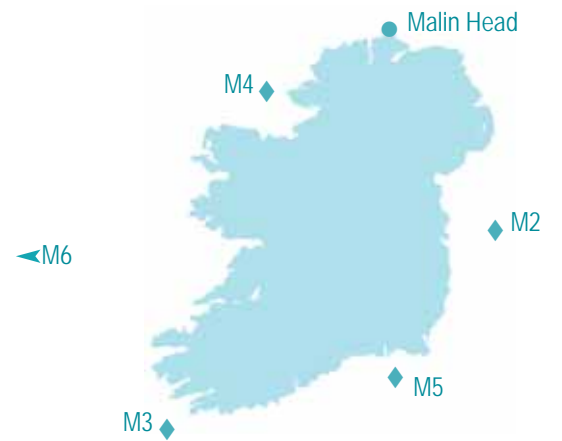
### MARINE OBSERVATIONS FROM IRISH MARINE DATA BUOY NETWORK



Hourly wind and wave conditions at M3 (51.22°N, 10.55°W)

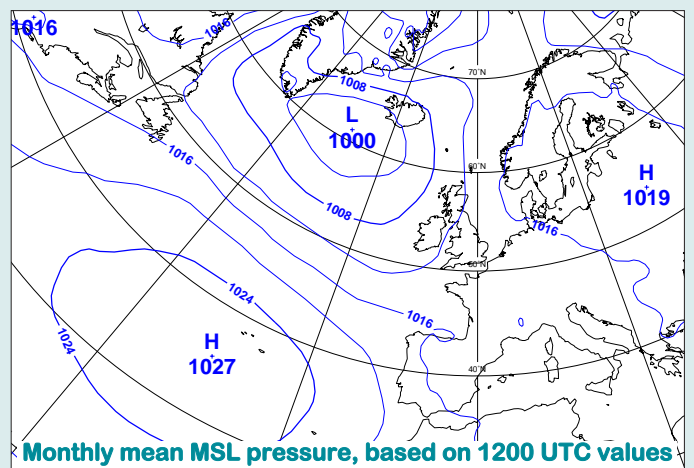
Buoy	Sea surface temp. (°C)	Mean wind speed (knots)	Max. 10-min wind (knots)	Mean wave height (m.)	Max. wave height (m.)
M2		not available			
M3	10.7	14.5	28	2.8	5.3
M4	10.3	n/a	n/a	2.7	4.5
M5	9.7	14.0	34	1.7	4.6
M6	11.5	16.0	30	n/a	n/a
Malin Head	8.8				

#### Summary of Mean Monthly Values

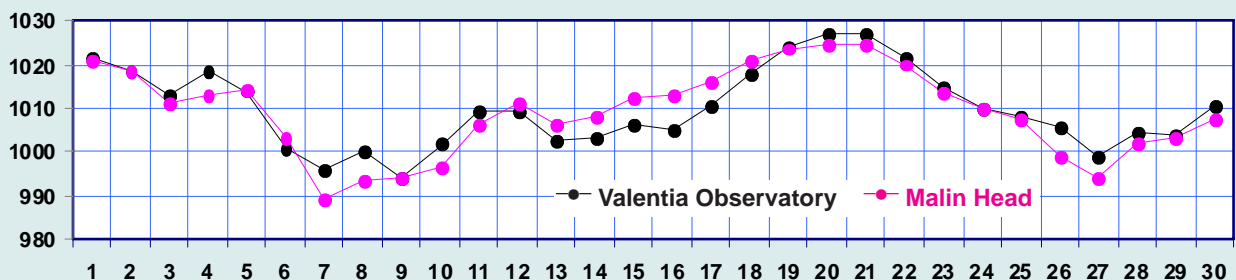


### MEAN ATMOSPHERIC PRESSURE

Mean sea level pressure values for the month of around 1010hPa generally varied little over the country; these values are 5 or 6hPa below normal for April. Pressure was below normal during the first and final weeks, but rose above normal after mid-month as an anticyclone developed to the north. The lowest pressure of the month, 985.2hPa, was measured at both Dublin Airport and Casement Aerodrome on the 7th, while the highest value of 1029.7hPa was recorded at Fermoy (Moorepark) on the 20th.



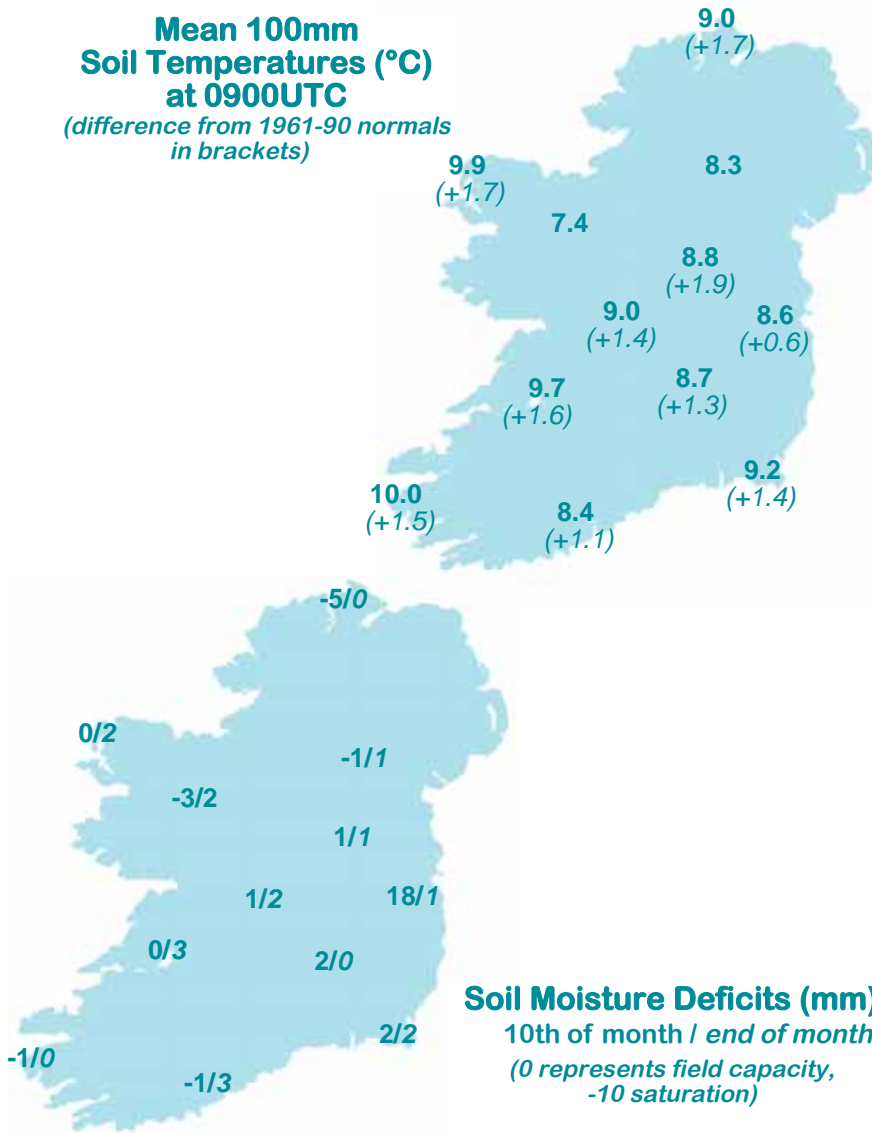
Monthly mean MSL pressure, based on 1200 UTC values



Mean daily Mean Sea Level pressure (hPa)

**Mean 100mm Soil Temperatures (°C) at 0900UTC**

(difference from 1961-90 normals in brackets)

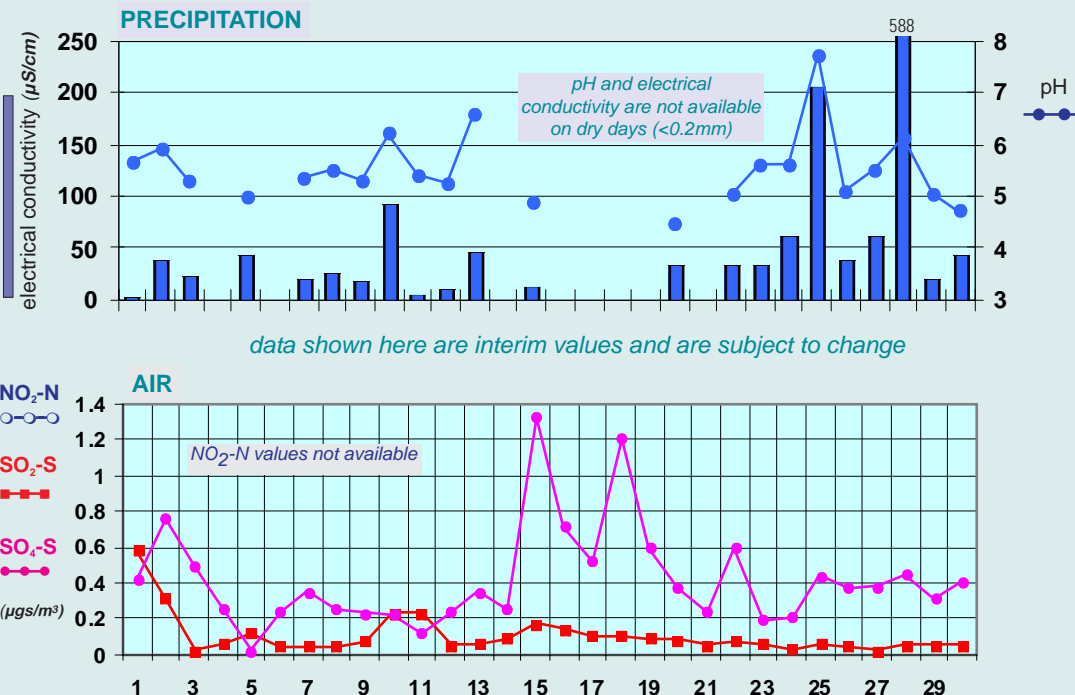


**Soil Temperatures at 0900UTC**

County/ Station	°C		
	100mm	200mm	300mm
<b>CO. CARLOW</b>			
CARLOW (OAK PARK)	8.7	8.8	9.1
<b>CO. CAVAN</b>			
BALLYHAISE	8.3	8.7	9.1
<b>CO. CLARE</b>			
SHANNON AIRPORT	9.7	10.0	10.4
CARRON	9.6		10.0
<b>CO. CORK</b>			
ROCHE'S POINT	9.3	9.5	10.1
FERMOY (MOOREPARK)	9.4	9.7	9.9
CORK AIRPORT	8.4	8.6	9.6
SHERKIN ISLAND	10.1	10.3	10.4
BALLINCURRIG (PEAFIELD)	8.9	8.8	10.0
<b>CO. DONEGAL</b>			
MALIN HEAD	9.0	9.6	9.9
<b>CO. DUBLIN</b>			
DUBLIN (PHOENIX PARK)	9.0	9.6	9.9
DUBLIN AIRPORT	8.4	8.7	9.2
CASEMENT AERODROME	8.6	9.1	9.3
<b>CO. KERRY</b>			
VALENTIA OBSERVATORY	10.0	10.7	11.6
<b>CO. LIMERICK</b>			
MOUNT RUSSELL	8.1	8.8	
<b>CO. LOUTH</b>			
ARDEE (BOHARNAMOE)	9.0	9.6	9.5
<b>CO. MAYO</b>			
BELMULLET	9.9	10.5	11.8
KNOCK AIRPORT	7.4	8.2	8.6
<b>CO. MEATH</b>			
WARRENSTOWN	9.1	9.4	10.1
<b>CO. OFFALY</b>			
BIRR	9.0	9.6	10.4
<b>CO. TIPPERARY</b>			
FETHARD (PARSONSHILL)	7.9	8.6	
<b>CO. WATERFORD</b>			
DUNGARVAN (CARRIGLEA)		9.6	10.0
<b>CO. WESTMEATH</b>			
MULLINGAR	8.8	9.3	10.1
<b>CO. WEXFORD</b>			
JOHNSTOWN CASTLE	9.2	9.3	9.7
JOHN F. KENNEDY PARK	9.5	9.7	10.7
CLONROCHE (KNOXTOWN)	9.0	9.3	9.5

**Soil Moisture Deficits (mm)**  
10th of month / end of month  
(0 represents field capacity, -10 saturation)

**Chemical Analysis of Precipitation and Air Samples at Valentia Observatory**



Acid rain occurs when pollutants combine with moisture in the air to form sulphuric or nitric acid. pH is the simplest way of measuring the acidity of precipitation. Usually pH of 7.00 is considered neutral but this is not the case in rainfall samples. Pure water in the atmosphere has an equilibrium pH value of 5.65 at 20°C owing to carbon dioxide in the air dissolving to form carbonic acid. Any value below pH 5.65 is considered acid while any value above is considered alkaline.

Sulphur dioxide and sulphate in air contribute to the formation of sulphuric acid; nitrate in air contributes to the formation of nitric acid.

Conductivity measures the total ion activity in the rainfall, i.e. the higher the conductivity the greater the number of ions present.

10-DAY VALUES FOR SELECTED AGROMETEOROLOGICAL STATIONS		RAINFALL (MM)				TEMPERATURE (°C)												SUNSHINE (HOURS)			
Station	period	amount	% of average	rain days	wet days	mean max.	mean min.	mean daily	diff. from average	lowest min.	date	days with air frost	degree days > 4.4°C	degree days > 10.0°C	lowest "grass-min."	date	days with ground frost	mean 10cm at 0900h	mean 30cm at 0900h	total no. of hours	% of average
Cavan (Loreto)	11-20	10.1	-	6	5	13.5	5.0	9.3	-	0.2	19	0	50	11	-3.4	19	1	-	-	61.9	-
	21-end	70.5	-	9	7	13.9	6.3	10.1	-	2.4	28	0	58	14	-1.4	28	1	-	-	38.8	-
	month	115.2	-	23	18	13.3	5.4	9.4	-	0.2	19	0	152	31	-3.4	19	4	-	-	146.4	-
<b>Co. Cork</b>	1-10	46.8	-	6	5	12.3	4.1	8.2	-	-0.1	2	1	42	6	-0.4	2	2	8.2	8.7	48.1	-
Fermoy	11-20	19.3	-	5	4	13.7	5.5	9.6	-	-0.5	11	1	54	11	-1.4	11	1	9.7	10.0	57.4	-
	21-end	49.3	-	9	7	13.2	6.7	10.0	-	4.7	28	0	56	11	3.7	28	0	10.5	10.9	36.8	-
	month	115.4	196	20	16	13.1	5.4	9.3	1.3	-0.5	11	2	151	28	-1.4	11	3	9.5	9.9	142.3	100
<b>Co. Donegal</b>	1-10	76.6	-	7	7	13.1	5.8	9.5	-	4.2	5	0	51	10	1.1	10	0	-	-	-	-
Glenties	11-20	13.8	-	5	4	15.8	4.9	10.4	-	2.4	12	0	61	18	-1.1	19	2	-	-	-	-
	21-end	53.9	-	8	7	13.4	4.9	9.2	-	1.8	22	0	49	10	-1.4	27	2	-	-	-	-
	month	144.3	180	20	18	14.1	5.2	9.7	2.2	1.8	22	0	161	37	-1.4	27	4	-	-	-	-
<b>Co. Kerry</b>	1-10	52.3	-	7	4	13.8	5.2	9.5	-	2.0	10	0	52	11	-0.7	10	2	-	-	50.4	-
Ardfert	11-20	22.0	-	5	4	15.8	5.4	10.6	-	2.1	12	0	63	20	-1.2	12	2	-	-	66.5	-
	21-end	56.9	-	8	8	14.3	6.0	10.2	-	3.5	28	0	58	13	0.6	28	0	-	-	41.2	-
	month	131.2	-	20	16	14.6	5.5	10.1	1.7	2.0	10	0	173	45	-1.2	12	4	-	-	158.1	-
<b>Co. Louth</b>	1-10	23.6	-	6	6	12.8	3.4	8.1	-	-0.1	5	1	40	7	-1.1	5	3	7.9	8.3	-	-
Ardee	11-20	17.5	-	4	4	14.4	4.6	9.5	-	0.6	19	0	54	12	-1.0	11	3	9.0	9.3	-	-
	21-end	32.6	-	7	6	14.0	6.7	10.4	-	1.3	28	0	61	15	0.8	28	0	10.3	11.0	-	-
	month	73.7	134	17	16	13.7	4.9	9.3	1.8	-0.1	5	1	154	33	-1.1	5	6	9.0	9.5	-	-
<b>Co. Waterford</b>	1-10	67.7	-	7	5	12.5	4.0	8.3	-	-1.0	5	1	42	7	-2.1	5	3	-	8.9	60.1	-
Dungarvan	11-20	24.2	-	5	3	13.6	5.6	9.6	-	-1.4	11	1	54	11	-2.9	11	2	-	10.1	61.7	-
	21-end	55.8	-	8	8	13.8	6.6	10.2	-	3.5	29	0	58	14	2.5	29	0	-	11.1	33.1	-
	month	147.7	-	20	16	13.3	5.4	9.4	0.9	-1.4	11	2	154	31	-2.9	11	5	-	10.0	154.9	102
<b>Co. Wexford</b>	1-10	57.0	-	6	6	11.9	4.7	8.3	-	1.4	5	0	41	5	-2.2	5	4	8.6	9.8	58.6	-
J.F.K. Park	11-20	23.6	-	5	5	12.4	6.1	9.3	-	2.6	20	0	49	6	-2.0	11	3	9.4	10.7	61.4	-
	21-end	64.3	-	7	7	13.0	6.2	9.6	-	0.2	26	0	53	10	-1.0	26	1	10.5	11.6	40.2	-
	month	144.9	226	18	18	12.4	5.7	9.1	0.9	0.2	26	0	143	21	-2.2	5	8	9.5	10.7	160.2	108

MEASURED POTENTIAL EVAPOTRANSPIRATION (P.E.) AND SOIL MOISTURE						P.E. (Penman)		GLOBAL SOLAR RADIATION (MJ/sq.m.)			
County/Station	Period	P.E. (mm)		Soil Moisture (mm)		Station	total(mm)	1st-10th	11th-20th	21st-end	Total
		Amount	Deficit	Accum'ltd	Deficit	Surplus					
<b>Co. Kerry</b>	1-10	28.0	-	0	48	<b>Co. Carlow</b>	46	112.72	112.62	112.10	337.44
Valentia Obs.	11-20	9.9	-	0	25	Carlow (Oak Park)					
	21-end	24.0	-	0	22	<b>Co. Cavan</b>	49	109.41	134.54	115.13	359.08
	month	61.9				Ballyhaise					
<b>Co. Wexford</b>	1-10	9.4	-	0	21	<b>Co. Clare</b>	53				
Johnstown Castle	11-20	12.1	-	0	13	Shannon Airport					
	21-end	18.7	-	0	28	<b>Co. Cork</b>	46	132.58	165.91	114.29	412.78
	month	40.2				Cork Airport					
						Roche's Point					
						<b>Co. Donegal</b>	51	108.87	135.54	144.24	388.65
						Malin Head					
						<b>Co. Dublin</b>	47	114.93	130.75	119.84	365.52
						Dublin Airport					
						Casement Aerodrome	49				
						<b>Co Kerry</b>	54	125.17	142.39	128.37	395.93
						Valentia Obs.					
						<b>Co. Mayo</b>	53	114.37	154.32	150.58	419.27
						Belmullet					
						Knock Airport	48				
						<b>Co. Offaly</b>	50	117.13	123.80	117.14	354.85
						Birr					
						<b>Co. Westmeath</b>	47	109.81	120.93	115.70	346.44
						Mullingar					
						<b>Co. Wexford</b>	45	115.36	130.80	106.35	352.51
						Johnstown Castle					

MONTHLY EVAPORATION (MM) FROM CLASS A PAN			
County	Station	Monthly Rainfall (mm)	Monthly Evaporation (mm)
Clare	Kilmaley	156.4	48.9
Cork	Fermoy (Moorepark)	115.4	52.7
Kerry	Valentia Observatory	170.1	67.0
Kildare	Poulaphuca	85.1	40.7
Mayo	Newport (Furnace)	92.8	n/a
Offaly	Derrygreenagh	100.8	39.8
Waterford	Dungarvan (Carriglea)	147.7	45.1
Wexford	J.F.K. Park	144.9	57.7

**Wednesday 1st:** A slight ground frost overnight where cloud broke. Early mist or fog cleared to give a dry, warm day with some sunny spells. Afternoon temperatures were above normal generally. Cold after dark, with ground frost in parts of the midlands and east. Winds were light to moderate, southerly.

**Rainfall:** nil

**Temperature:** max. 11°C to 15°C, min. 2°C to 9°C, ground temperatures down to -4°C at Casement Aerodrome

**Sunshine:** trace to 3 hours, sunniest at Belmullet, trace at Knock Airport

**Thursday 2nd:** Clear skies overnight, with widespread sharp to severe frost except near the south and west coasts. Early cloud in the east soon cleared and it was a dry, sunny day everywhere. Cooler near south and west coasts. Winds were southerly, light to moderate generally but stronger in the northwest.

**Rainfall:** nil to trace

**Temperature:** max. 11°C to 17°C, min. -1°C to 8°C, ground temperatures down to -5°C at Birr

**Sunshine:** 10 to 12 hours, sunniest at Knock Airport, 10 hours at Valentia

**Friday 3rd:** A cold night with sharp to severe frost in many inland areas. During the morning, rain spread into western areas and crossed the country during the period, heaviest in the west. Some sunny spells in the midlands and east. Winds were south to southwesterly, light to moderate.

**Rainfall:** 4 to 18mm, heaviest at Valentia, 4mm at Ballyhaise

**Temperature:** max. 10°C to 15°C, min. 0°C to 9°C, ground temperatures down to -4°C at Dublin Airport

**Sunshine:** nil to 5 hours, sunniest at Dublin Airport, nil at Knock Airport

**Saturday 4th:** Rain in the north overnight. A bright, breezy day followed with scattered showers and sunny periods. Showers died out in the afternoon. Becoming cold after dark with ground frost developing in places. Southwesterly winds at first veered northwesterly and increased moderate to fresh and gusty, backing southwesterly and easing gradually in the afternoon.

**Rainfall:** nil to 13mm, heaviest at Malin Head, nil at Birr

**Temperature:** max. 10°C to 13°C, min. 3°C to 7°C, ground temperatures down to -4°C at Carlow (Oak Park)

**Sunshine:** 7 to 10 hours, sunniest at Shannon Airport, 7 hours at Malin Head

**Sunday 5th:** Dry, clear and cold overnight with a slight to sharp ground frost in places. A largely dry, breezy day followed with well-scattered showers and sunny spells. Cloudier weather with rain moved into the southwest in the evening and spread northeastwards across the country. Winds were light southerly, fresh and gusty on northwest coasts, increasing moderate to fresh and gusty during the day, backing southeasterly by evening.

**Rainfall:** nil to 1mm generally, 6mm at Valentia

**Temperature:** max. 10°C to 12°C, min. 0°C to 8°C, ground temperatures down to -4°C in the east midlands

**Sunshine:** 1 to 6 hours, sunniest in the east, 1 hour at Knock Airport

**Monday 6th:** Rain in western areas during the night moved eastwards, affecting all areas during the day. The rain was heavy and persistent at times. A clearance to showers followed into western areas during the afternoon and spread to all areas by evening. Some sunny spells also, mainly in western areas. Winds were southeasterly, moderate to fresh and gusty, veering southwesterly, gale force with stronger gusts, easing to light by evening.

**Rainfall:** trace to 12mm, heaviest at Cork Airport, trace at Malin Head

**Temperature:** max. 9°C to 13°C, min. 3°C to 7°C, no ground frost

**Sunshine:** nil to 7 hours, sunniest at Valentia, nil at Dublin Airport

**Tuesday 7th:** Some showers in the north and northwest overnight and throughout the morning, with sunny spells over the remainder of the country. During the afternoon, rain spread eastwards across the country with some heavy falls, especially in western areas. Rain continued through the evening and night. Winds were southwesterly, moderate to strong and gusty, backing northerly by late evening and decreasing.

**Rainfall:** 1 to 26mm, heaviest at Belmullet, 1mm at Dublin Airport

**Temperature:** max. 9°C to 13°C, min. 2°C to 7°C, ground temperatures below zero at Cork Airport and Birr

**Sunshine:** trace to 6 hours, sunniest at Dublin Airport, trace at Valentia

**Wednesday 8th:** Some heavy showers in northern parts overnight, generally dry elsewhere. Sunny spells in all areas during the afternoon, but scattered showers continued in northern parts. Late in the afternoon, cloud and rain moved into the southwest, reaching parts of Connacht and south Leinster by

evening. Becoming wet and windy everywhere overnight as rain spread countrywide. Winds were south to southeasterly, fresh to strong and gusty.

**Rainfall:** <1 to 11mm, heaviest at Valentia, <1mm at Casement Aerodrome

**Temperature:** max. 10°C to 14°C, min. 2°C to 7°C, no ground frost

**Sunshine:** 6 to 10 hours, sunniest at Dublin Airport, 6 hours at Knock Airport

**Thursday 9th:** A wet day generally with all areas experiencing rain, heaviest in the south of the country. Some sunny spells in the east during the morning. The north and northwest dried up during the late morning, but rain returned to most places during the afternoon. Rain became less widespread during the evening, although with isolated heavy falls in places. Cool. Winds were moderate southerly, turning westerly by evening.

**Rainfall:** <1 to 23mm, heaviest at Cork Airport, <1mm at Dublin Airport

**Temperature:** max. 10°C to 15°C, min. 4°C to 9°C, no ground frost

**Sunshine:** nil to 1 hour generally, 4 hours at Casement Aerodrome

**Friday 10th:** Overnight showers in the west, north and northwest. The showers continued during the morning, heaviest in the north. Sunny spells also in most parts. Showers continued during the afternoon, becoming more widespread and with thunderstorms in places. Ground frost inland after dark. Winds were southwesterly, light to moderate.

**Rainfall:** nil to 6mm, heaviest at Malin Head, nil at Johnstown Castle

**Temperature:** max. 8°C to 12°C, min. 2°C to 5°C, ground temperatures down to -3°C at Birr

**Sunshine:** 4 to 11 hours, sunniest at Shannon Airport, 4 hours at Knock Airport

**Saturday 11th:** Very cold overnight with a sharp ground frost in places. Some well-scattered showers, mainly along Atlantic coasts. It was a warm day with scattered showers, heaviest in the southwest. Sunny spells also, particularly in the east. Becoming cold again after dark. Winds were light southerly, moderate at times on northwestern coasts, becoming light and variable in the afternoon.

**Rainfall:** nil to 6mm, heaviest at Valentia, nil in the east

**Temperature:** max. 11°C to 13°C, min. -1°C to 4°C, ground temperatures down to -5°C at Dublin Airport

**Sunshine:** 1 to 11 hours, sunniest at Casement Aerodrome, 1 hour at Shannon

**Sunday 12th:** Early frost and fog cleared to give a mostly dry day with sunny spells and light winds. By late afternoon, however, rain reached the southwest and spread northeastwards during the evening. Some very heavy falls in the extreme southwest. Winds were light, southerly.

**Rainfall:** nil to 1mm generally, 12mm at Valentia

**Temperature:** max. 11°C to 14°C, min. -1°C to 6°C, ground temperatures down to -4°C at Casement Aerodrome

**Sunshine:** 4 to 11 hours, sunniest at Casement Aerodrome, 4 hours at Birr

**Monday 13th:** Rain in western areas overnight moved slowly eastwards during the day. The rain was followed by showers in western areas, but persisted in the east into the late evening. Sunshine amounts varied considerably. Winds were southeasterly in direction, light to moderate generally, but stronger in northern areas with occasional gale gusts.

**Rainfall:** <1 to 17mm, heaviest at Knock Airport, <1mm at Casement Aerodrome

**Temperature:** max. 9°C to 16°C, min. 6°C to 9°C, no ground frost

**Sunshine:** nil to 10 hours, sunniest at Valentia, nil at Dublin Airport

**Tuesday 14th:** Rain in the east and northeast overnight cleared during the morning. Largely dry elsewhere apart from isolated showers. It was a breezy day with scattered showers and sunny spells; some of the showers were heavy. Generally dry by evening. Light to moderate southeasterly winds, fresh at times. Winds decreased light in the evening.

**Rainfall:** nil to 3mm generally, 11mm at Valentia

**Temperature:** max. 11°C to 17°C, min. 4°C to 9°C, ground temperatures down to -1°C at Birr and Casement Aerodrome

**Sunshine:** 4 to 10 hours, sunniest at Dublin Airport, 4 hours at Cork Airport

**Wednesday 15th:** Light rain or drizzle affected most parts of the country by dawn. Heavier rain developed in Ulster and Leinster during the day. The rain and drizzle died out in most areas towards evening, however heavy, thundery rain moved onto the southeast coast, crossing southern coastal counties during the late evening. Winds were easterly, light to moderate.

**Rainfall:** nil to 14mm, heaviest at Cork Airport, nil at Malin Head

**Temperature:** max. 10°C to 12°C, min. 4°C to 9°C, no ground frost

**Sunshine:** nil to trace



**Thursday 16th:** Rain or drizzle in eastern areas during the night. Misty in many areas with poor visibility. The rain became heavier during the morning in the east and persisted into the late evening. All other areas remained dry. Long sunny spells in the west. Winds were northeasterly in direction, moderate to fresh, occasionally strong with gusts, up to gale force in some northern areas.

**Rainfall:** nil to 10mm, heaviest at Casement Aerodrome

**Temperature:** max. 10°C to 17°C, min. 8°C to 9°C, no ground frost

**Sunshine:** nil to 10 hours, sunniest at Belmullet, nil in the east

**Friday 17th:** Outbreaks of rain and drizzle over the midlands and east overnight, with some heavy falls along the east coast. By mid-morning the rain had cleared most parts and the remainder of the day was dry. Prolonged sunshine in the south and southwest and also in the north. Winds were east or northeasterly, light to moderate.

**Rainfall:** nil to 6mm, heaviest at Johnstown Castle

**Temperature:** max. 10°C to 17°C, min. 6°C to 8°C, no ground frost

**Sunshine:** nil to 11 hours, sunniest at Cork Airport

**Saturday 18th:** Early mist was slow to clear in places, but sunshine developed and it was a dry day in all areas. Long sunny spells everywhere during the afternoon and evening. The night was clear, with mist developing again and some ground frost in the midlands and east. Winds were light easterly.

**Rainfall:** nil

**Temperature:** max. 10°C to 18°C, min 2°C to 9°C, ground temperatures down to -3°C at Birr

**Sunshine:** 9 to 13 hours, sunniest at Dublin Airport, 9 hours at Cork Airport

**Sunday 19th:** Dry and cold overnight. A dry and sunny day in most parts; cloud increased in the southwest during the morning, however, and these parts remained duller than elsewhere. Some rain or drizzle in the northwest by late evening, clear skies elsewhere. Winds were light and variable.

**Rainfall:** nil generally, 1mm at Belmullet

**Temperature:** max. 12°C to 17°C, min. -1°C to 9°C, ground temperatures down to -6°C at Birr

**Sunshine:** 4 to 12 hours, sunniest at Dublin Airport, 4 hours at Shannon Airport

**Monday 20th:** Rain and drizzle along the north and northwest coast overnight. A dry, warm day generally with long periods of sunshine, particularly in the east of the country, but mainly overcast in north and northwest. Winds were light, variable or southerly in direction.

**Rainfall:** nil to <1mm generally, 4mm at Belmullet

**Temperature:** max. 13°C to 18°C, min. 3°C to 10°C, ground temperatures down to -1°C at Birr

**Sunshine:** <1 to 13 hours, sunniest at Dublin Airport, <1 hour at Malin Head

**Tuesday 21st:** Rain and drizzle along the west coast during the night moved eastwards, clearing the east coast by early morning. The morning was mostly dry with variable cloud amounts. Dry with sunshine in most parts during the afternoon. Staying dry throughout the evening. Light westerly winds.

**Rainfall:** nil to 2mm, heaviest at Claremorris, nil at Carlow (Oak Park)

**Temperature:** max. 12°C to 18°C, min. 4°C to 9°C, ground temperatures down to -1°C at Birr

**Sunshine:** 8 to 11 hours, sunniest at Belmullet, 8 hours at Valentia

**Wednesday 22nd:** Early fog in eastern and southern areas cleared by mid-morning. Hazy sunshine in most areas gave way to more cloudy conditions as the day progressed. Some light drizzle in Connacht and Munster during the late morning and early afternoon, turning to more persistent rain which spread from the west during the evening. Winds were light southerly.

**Rainfall:** nil to 10mm, heaviest at Valentia, nil in the east

**Temperature:** max. 12°C to 16°C, min. 3°C to 10°C, ground temperatures down to -2°C at Birr

**Sunshine:** trace to 6 hours, sunniest at Dublin Airport, trace at Cork Airport

**Thursday 23rd:** Rain and drizzle in eastern areas for the first half of the day, but largely dry elsewhere with isolated showers. Heavier and more persistent rain moved northwards over the country in the afternoon and evening to affect all areas. Long sunny spells in the north, dull in the east and south. Winds were generally light to moderate, southwesterly in direction.

**Rainfall:** 4 to 9mm, heaviest at Shannon Airport, 4mm at Dublin Airport

**Temperature:** max. 11°C to 15°C, min. 6°C to 10°C, ground temperatures below zero at Valentia

**Sunshine:** nil to 8 hours, sunniest at Malin Head, nil in the east

**Friday 24th:** A band of rain in the west, heavy and thundery at times, moved gradually eastwards during the day to affect all areas. Sunny spells in the west after the rain cleared, but little or no sunshine in the east. Northwesterly winds were light, occasionally moderate.

**Rainfall:** 2 to 17mm, heaviest at Birr, 2mm at Belmullet

**Temperature:** max. 10°C to 13°C, min. 5°C to 8°C, no ground frost

**Sunshine:** nil to 11 hours, sunniest in the west, nil in the east and north

**Saturday 25th:** A line of heavy, thundery rain stretching from Antrim to Waterford moved slowly westwards during the night, clearing the west coast by mid-morning. Further rain or showers throughout the day, some heavy. Long spells of sunshine in the east, north and west, cloudier through the midlands and southwest. Winds were north or northwesterly, generally light but strong in the south and southeast until evening when they decreased to light.

**Rainfall:** nil to 17mm, heaviest at Johnstown Castle, nil at Belmullet

**Temperature:** max. 10°C to 15°C, min. 4°C to 8°C, ground temperatures down to -1°C at Casement Aerodrome

**Sunshine:** trace to 7 hours, sunniest at Malin Head, trace at Shannon Airport

**Sunday 26th:** Rain in the west in the morning moved eastwards during the day. Apart from some western and northern areas, amounts were generally small. Only a few sunny spells, mainly in the south. Further rain reached the west coast by evening and crossed the country, giving some heavy falls. Winds were northwesterly, backing west to southwesterly later, moderate to fresh in western areas, up to gale force at times.

**Rainfall:** 1 to 13mm, heaviest at Ballyhaise, 1mm at Roches Point

**Temperature:** max. 10°C to 12°C, min. 2°C to 8°C, ground temperatures down to -1°C at Carlow (Oak Park)

**Sunshine:** nil to <1 hour generally, <2 hours at Cork Airport

**Monday 27th:** Showers in the west, with more persistent rain in eastern areas, clearing overnight. Showers in the west and north during the morning, some heavy, dry further east with sunshine. During the afternoon the showers became more widespread and heavier, some with hail and thunder. Winds were west to northwesterly, light to moderate, with occasional gale gusts in the south.

**Rainfall:** 3 to 9mm, heaviest at Valentia, 3mm at Malin Head

**Temperature:** max. 10°C to 12°C, min. 2°C to 7°C, ground temperatures down to -2°C at Casement Aerodrome

**Sunshine:** 7 to 11 hours, sunniest at Malin Head, 7 hours at Valentia

**Tuesday 28th:** Rain and drizzle in the northwest moved southeastwards during the early hours, giving some heavy falls in the south midlands. Mostly dry during the afternoon with just a few scattered light showers in parts of Munster. Prolonged sunshine in the east and north, cloudier elsewhere. Winds were light to moderate, north or northwesterly, becoming light during the evening.

**Rainfall:** nil to 7mm, heaviest at Birr

**Temperature:** max. 11°C to 15°C, min. 0°C to 8°C, ground temperatures down to -3°C at Casement Aerodrome

**Sunshine:** 2 to 10 hours, sunniest at Dublin Airport, 2 hours at Cork Airport

**Wednesday 29th:** A wet day generally with rain or showers affecting all parts at times during the day. Some heavy falls, particularly in the northwest and south. Sunny spells during the afternoon, mainly in the west, while the north and east remained overcast. Winds were light cyclonic, becoming moderate south or southeasterly, before easing by evening.

**Rainfall:** 1 to 10mm, heaviest at Knock and Cork Airport's, 1mm at Malin Head

**Temperature:** max. 11°C to 16°C, min. 3°C to 9°C, ground temperatures down to -1°C at Birr

**Sunshine:** nil to 3 hours, sunniest at Belmullet, nil at Malin Head

**Thursday 30th:** Early rain and drizzle in northern and eastern areas, dry with sunny spells further west. The rain and drizzle cleared the east coast by mid-morning, with some clear spells developing here also. The afternoon and evening were dry and sunny in most places. Later in the night, some rain and drizzle developed along the west coast. Winds were light, variable in direction.

**Rainfall:** nil to 5mm, heaviest at Malin Head, nil at Claremorris

**Temperature:** max. 12°C to 16°C, min. 5°C to 8°C, no ground frost

**Sunshine:** 6 to 14 hours, sunniest in the west, 6 hours at Casement Aerodrome

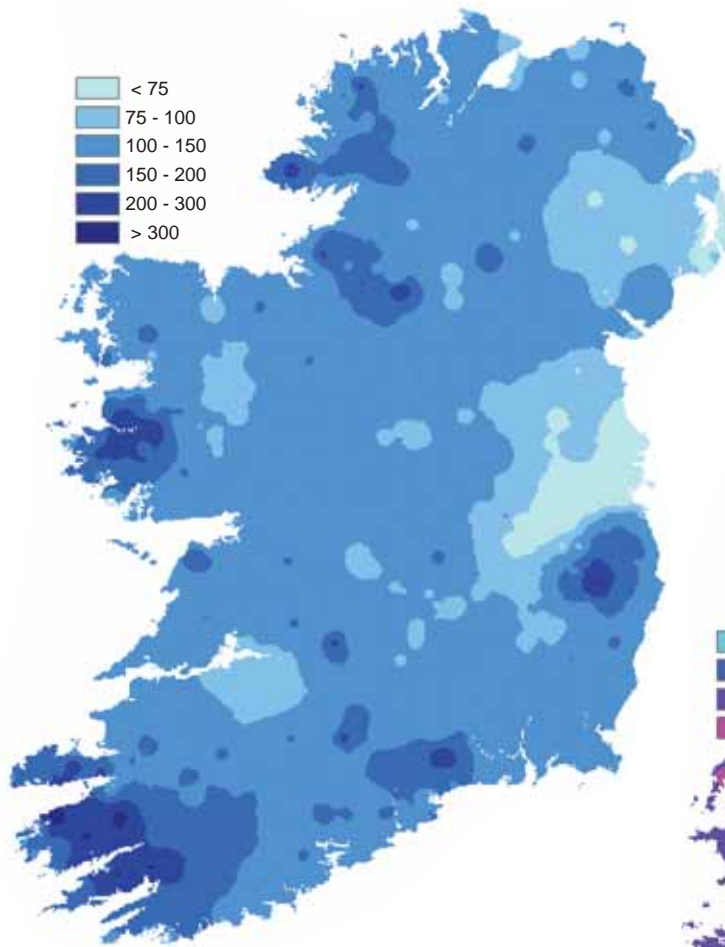
## Wetter than normal everywhere, very wet in places

April rainfall totals were above normal everywhere and were more than twice the monthly normal in parts of the midlands, northwest and south. Totals ranged from 64mm at Dublin (Merrion Square) to 183mm at Maam Valley, Co. Galway, with percentage of normal values between 131% at Merrion Square and 236% at Ballyshannon (Cathleen's Fall), Co. Donegal. It was the wettest April for over 40 years at a number of stations, including Cork Airport.

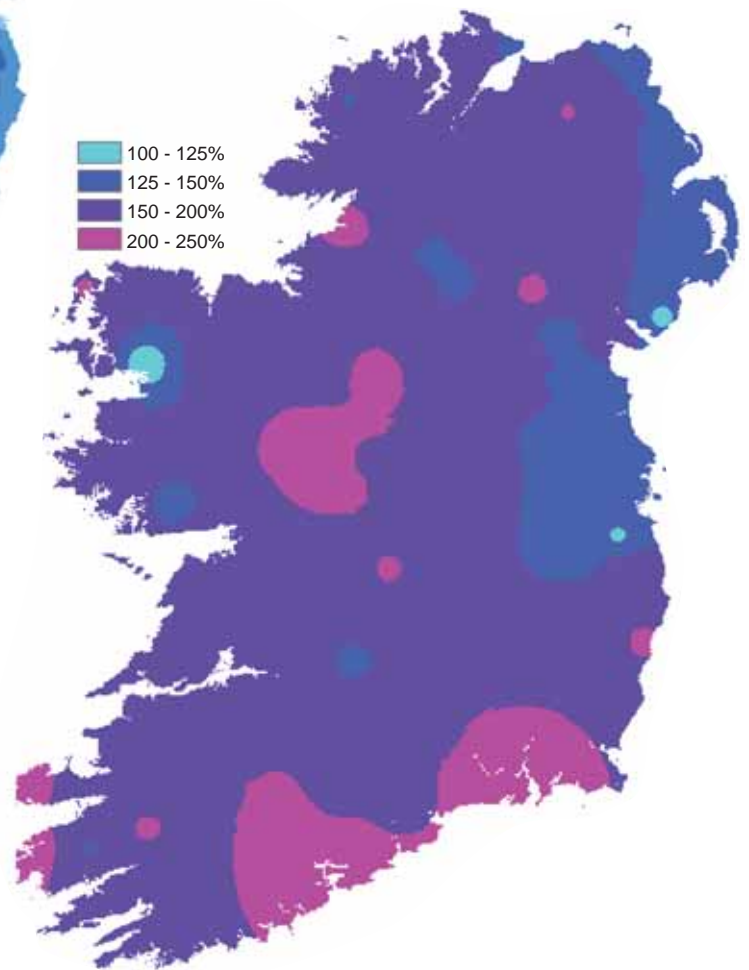
There were short dry spells over the country in the periods 1st/2nd and 18th to 20th, but the remainder of the month was wet, with spells of heavy rain at times. The heaviest daily falls were in the periods 7th to 9th and 23rd to 25th, while the 16th was the wettest day of the month in the Dublin area. The highest daily fall, 33.5mm, was measured at John F Kennedy Park, Co. Wexford, on the 24th; this was the highest daily fall for April at the station since 1984. Belmullet's fall of 26mm on the 7th was its highest on record for April- see page 2. There were between 14 and 20 wetdays recorded during the month at the majority of stations (*days with 1mm or more of rainfall*), well above the normal range for April of between 10 and 14 wetdays.

County/ Station	Total Amount (mm)	% of 1961-90 average	Most in a day / date		Number of Raindays (>0.2mm)	Wetdays (≥1mm)
<b>CO. CARLOW</b>						
CARLOW (OAK PARK)	106.2	221	18.6	24	22	18
<b>CO. CAVAN</b>						
BALLYHAISE	114.2	197	15.3	23	22	19
CAVAN LORETO COLLEGE	115.2		15.8	23	23	18
<b>CO. CLARE</b>						
SHANNON AIRPORT	90.9	162	18.6	23	23	14
CARRON	139.8	163	16.7	26	24	20
<b>CO. CORK</b>						
ROCHE'S POINT	114.1	215	13.3	8	19	16
FERMOY (MOOREPARK)	115.4	196	16.4	8	20	16
CORK AIRPORT	159.8	228	23.2	8	20	19
SHERKIN ISLAND	95.8	147	15.1	23	22	16
BALLINCURRIG (PEAFIELD)	158.6		22.5	8	19	17
<b>CO. DONEGAL</b>						
MALIN HEAD	97.1	167	25.1	7	16	14
GLENTIES HATCHERY	144.3	180	n/a	n/a	21	18
BALLYSHANNON (CATHLEEN'S FALL)	134.5	236	26.8	3	21	17
<b>CO. DUBLIN</b>						
DUBLIN (PHOENIX PARK)	72.3	136	13.0	16	19	17
DUBLIN AIRPORT	71.6		11.9	16	19	16
CASEMENT AERODROME	75.7	148	12.2	16	18	16
DUBLIN (MERRION SQUARE)	64.2	131	10.8	16	19	12
<b>CO. GALWAY</b>						
GALWAY (UNIV. COLL.)	106.3	159	15.1	23	21	18
MAAM VALLEY	182.6		28.2	7	24	19
CONNEMARA NATIONAL PARK	151.9	183	22.1	7	19	16
BALLYGAR	140.3	230	20.5	25	21	17
<b>CO. KERRY</b>						
VALENTIA OBSERVATORY	170.1	221	17.9	8	24	22
ARDFERT (LISCAHANE)	131.2		29.1	9	20	16
<b>CO. LIMERICK</b>						
MOUNT RUSSELL	154.0		27.0	24	23	23
<b>CO. LOUTH</b>						
ARDEE (BOHARNAMOE)	73.7	134	10.5	24	17	16
<b>CO. MAYO</b>						
BELMULLET	114.8	201	25.9	7	19	17
STRAIDE	101.1	158	14.1	7	24	21
KNOCK AIRPORT	122.6		14.4	7 9	24	20
<b>CO. MEATH</b>						
WARRENTOWN	81.3	140	16.4	29	21	19
<b>CO. OFFALY</b>						
BIRR	109.2	206	19.6	24	19	14
DERRYGREENAGH	100.8	177	13.3	23	22	18
<b>CO. SLIGO</b>						
ARDTARMON	118.4		24.6	9	21	18
<b>CO. TIPPERARY</b>						
FETHARD (PARSONSHILL)	129.0		25.1	24	21	18
<b>CO. WATERFORD</b>						
WATERFORD (TYCOR)	135.5	222	19.7	24	19	19
DUNGARVAN (CARRIGLEA)	147.7		23.7	8	20	16
<b>CO. WESTMEATH</b>						
MULLINGAR	108.1	183	14.7	23	22	19
<b>CO. WEXFORD</b>						
JOHNSTOWN CASTLE	118.4	185	27.2	24	24	18
JOHN F. KENNEDY PARK	144.9	226	33.5	24	18	18
CLONROCHE (KNOXTOWN)	140.4		26.0	24	22	18

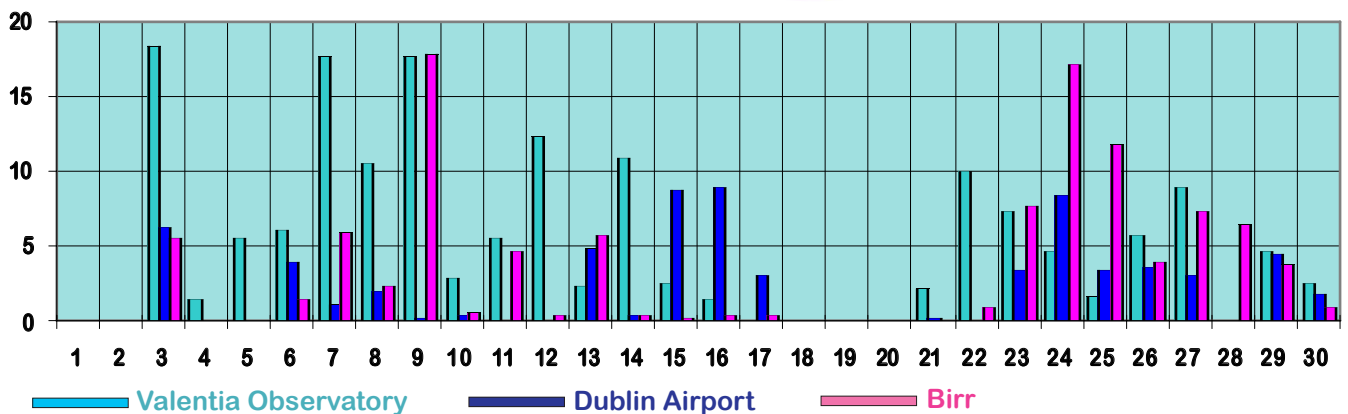
Total rainfall (mm)



Percentage of normal rainfall



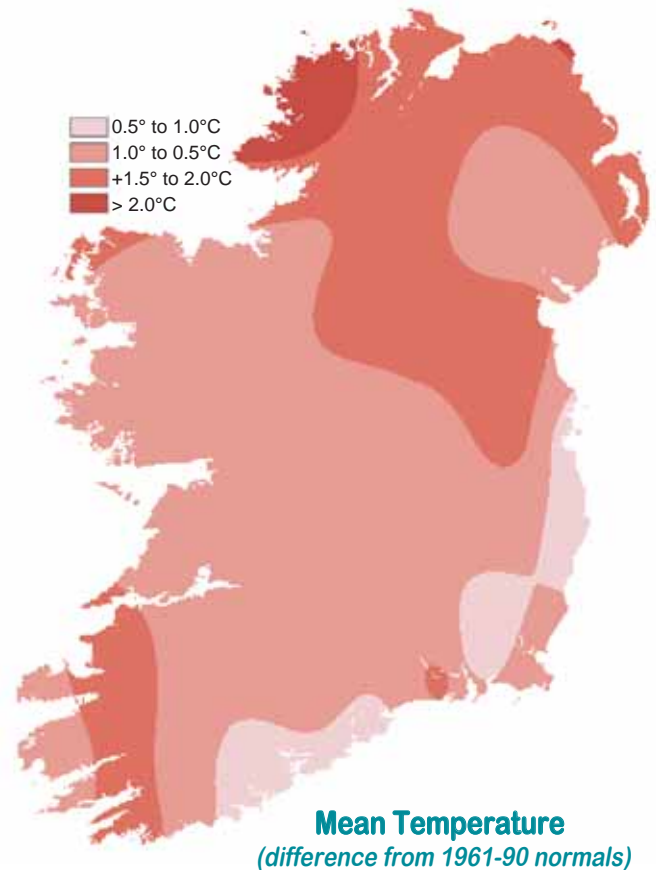
Daily 0-24h rainfall values (mm)



## Warmer than normal, especially over northern half

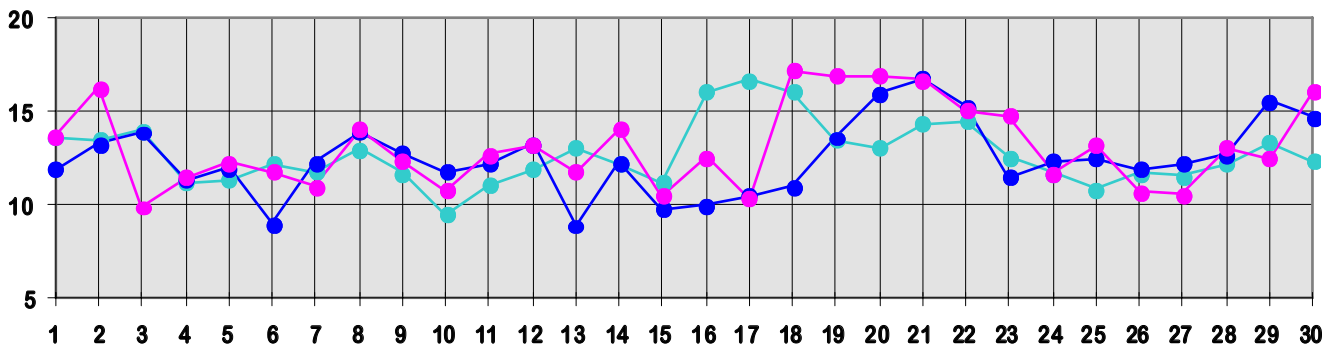
Mean air temperatures for the month were above normal everywhere, by at least one degree generally and by more than two degrees in parts of the northwest. Mean monthly values ranged from 8.2°C at Knock Airport to 10.4°C at Sherkin Island, Co. Cork.

As the chart below indicates, temperatures were close to or above normal throughout the month. The warmest weather was recorded between the 16th and 21st, when maximum values were around five degrees higher than normal. The month's highest air temperature of 19.1°C was recorded at Ardfert (Liscahane), Co. Kerry, on the 20th. Air and ground frost were less frequent than normal during the month. There was a total of between four and eight ground frosts at most inland stations, compared with the normal range for April of between seven and 12. Neither air nor ground frost were recorded at some coastal stations. Both the lowest air and ground temperatures of the month were recorded at Clonroche (Knoxtown), Co. Wexford: an air temperature of -1.5°C was measured

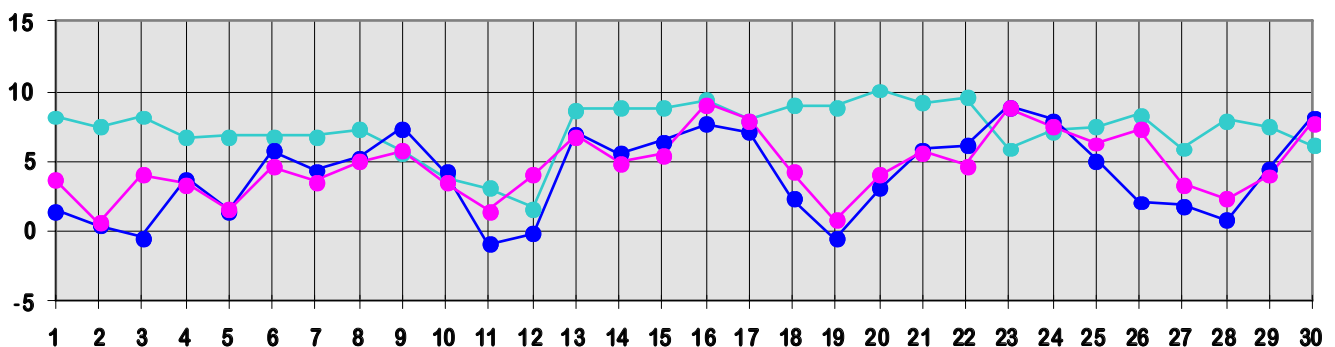


there on the 5th, while a grass minimum value of -8.0°C was recorded on both the 5th and 11th.

Daily 0-24h maximum temperatures (°C)



Daily 0-24h minimum temperatures (°C)



● Valentia Observatory      ● Dublin Airport      ● Birr

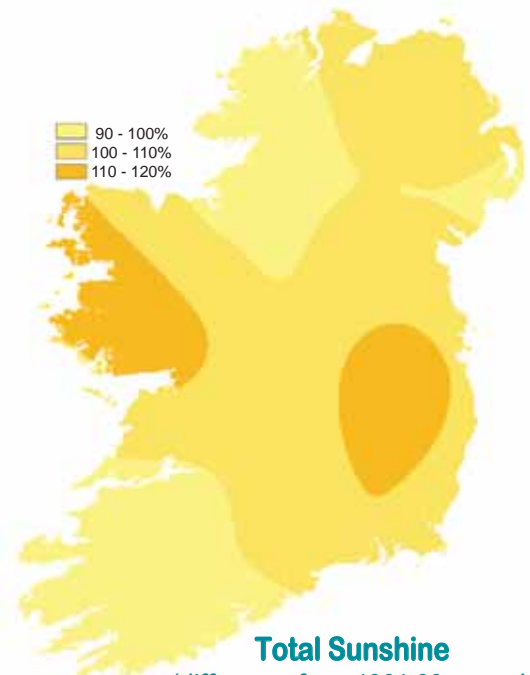
County/ Station	°C											
	Mean max.	Mean min.	Mean/ deviation from 1961-90 average		Highest max./date		Lowest min./date		Lowest grass min./date		Days with air frost ground frost	
<b>CO. CARLOW</b>												
CARLOW (OAK PARK)	13.1	5.3	9.2	1.1	17.8	20	0.8	2	-4.0	5	0	8
<b>CO. CAVAN</b>												
BALLYHAISE	12.8	5.2	9.0		17.2	20	-0.1	19	-1.5	28	1	2
CAVAN LORETO COLLEGE	13.3	5.4	9.4		18.7	20	0.2	19	-3.4	19	0	4
<b>CO. CLARE</b>												
SHANNON AIRPORT	13.6	6.4	10.0	1.1	17.2	20	1.1	2	-3.9	2	0	4
CARRON	12.5	5.1	8.8	1.1	16.1	20	0.4	12	-3.5	12	0	6
<b>CO. CORK</b>												
ROCHE'S POINT	11.6	6.9	9.3	0.7	15.0	21	3.4	11	-2.6	11	0	3
FERMOY (MOOREPARK)	13.1	5.4	9.3	1.3	17.4	21	-0.5	11	-1.4	11	2	3
CORK AIRPORT	11.7	5.4	8.6	0.7	16.9	21	1.4	11	-4.7	11	0	5
SHERKIN ISLAND	13.3	7.4	10.4	1.6	15.3	20	3.1	12	0.2	11	0	0
BALLINCURRIG (PEAFIELD)	12.9	4.5	8.7		17.0	21	-1.0	11	-2.1	5	1	4
<b>CO. DONEGAL</b>												
MALIN HEAD	12.1	6.8	9.5	1.7	17.2	19	3.1	12	1.7	12	0	0
GLENTIES HATCHERY	14.1	5.2	9.7	2.2	18.6	16	1.8	22	-1.4	27	0	4
BALLYSHANNON (CATHLEEN'S FALL)	13.0	6.0	9.5	1.6	18.0	19	2.0	12			0	
<b>CO. DUBLIN</b>												
DUBLIN (PHOENIX PARK)	13.4	5.3	9.4	1.5	17.8	21	0.3	11	-3.8	11	0	9
DUBLIN AIRPORT	12.5	4.8	8.7		16.8	21	-0.9	11	-5.0	11	4	9
CASEMENT AERODROME	12.8	5.3	9.1	1.4	17.8	20	0.2	28	-4.2	12	0	12
DUBLIN (MERRION SQUARE)	12.4	7.1	9.8	0.9	17.5	21	4.3	11			0	
<b>CO. GALWAY</b>												
GALWAY (UNIV. COLL.)	14.2	5.5	9.9	1.2	18.0	19	-0.2	19	-3.0	12	2	6
MAAM VALLEY	13.5	6.1	9.8		17.0	18	0.7	12	-3.3	12	0	1
CONNEMARA NATIONAL PARK	12.9	6.5	9.7		17.5	16	1.1	12			0	
BALLYGAR	14.1	4.3	9.2		18.6	21	-0.9	19	-2.0	2	1	6
<b>CO. KERRY</b>												
VALENTIA OBSERVATORY	12.7	7.4	10.1	1.1	16.7	17	1.7	12	-3.4	12	0	4
ARDFERT (LISCAHANE)	14.6	5.5	10.1	1.7	19.1	20	2.0	10	-1.2	12	0	4
<b>CO. LIMERICK</b>												
MOUNT RUSSELL	12.4	5.6	9.0		15.8	18	2.6	2	-1.9	2	0	1
<b>CO. LOUTH</b>												
ARDEE (BOHARNAMOE)	13.7	4.9	9.3	1.8	18.0	20	-0.1	5	-1.1	5	1	6
<b>CO. MAYO</b>												
BELMULLET	13.3	6.7	10.0	1.6	17.5	18	3.6	12	-0.7	12	0	1
STRAIDE	13.7	4.6	9.2	1.1	17.9	16	-1.0	12	-5.4	12	1	7
KNOCK AIRPORT	11.7	4.7	8.2		15.9	16	1.6	11	-4.0	12	0	2
<b>CO. MEATH</b>												
WARRENSTOWN	13.5	5.5	9.5	1.8	19.0	20	0.9	28	-3.2	5	0	7
<b>CO. OFFALY</b>												
BIRR	13.2	5.2	9.2	1.2	17.2	18	0.6	2	-6.4	19	0	11
DERRYGREENAGH	13.6	3.6	8.6	1.2	19.0	20	-1.0	19	-1.5	5	3	7
<b>CO. SLIGO</b>												
ARDTARMON	13.7	6.2	10.0		17.9	16	2.1	12	-0.3	12	0	1
<b>CO. TIPPERARY</b>												
FETHARD (PARSONSHILL)	12.5	5.0	8.8		16.6	20	1.7	11	-0.9	11	0	1
<b>CO. WATERFORD</b>												
WATERFORD (TYCOR)	13.3	6.5	9.9	1.5	16.6	30	1.0	11			0	
DUNGARVAN (CARRIGLEA)	13.3	5.4	9.4	0.9	19.0	21	-1.4	11	-2.9	11	2	5
<b>CO. WESTMEATH</b>												
MULLINGAR	12.9	4.8	8.9	1.4	17.6	20	-0.5	2	-4.0	5	1	6
<b>CO. WEXFORD</b>												
JOHNSTOWN CASTLE	12.0	6.2	9.1	1.2	14.7	21	1.4	5	-1.4	5	0	2
JOHN F. KENNEDY PARK	12.4	5.7	9.1	0.9	16.6	21	0.2	26	-2.2	5	0	8
CLONROCHE (KNOXTOWN)	12.6	4.8	8.7		17.1	21	-1.5	5	-8.0	5 11	2	18

County/ Station	Daily mean (hours/day)	% of average	% of possible	Most in a day/date
<b>CO. CAVAN</b>				
CAVAN LORETO COLLEGE	4.88			11.7 18
<b>CO. CLARE</b>				
SHANNON AIRPORT	4.89	99	35	13.6 30
<b>CO. CORK</b>				
FERMOY (MOOREPARK)	4.74	100	34	11.5 30
CORK AIRPORT	4.83	93	35	11.4 2
SHERKIN ISLAND	5.69	96	41	12.6 30
BALLINCURRIG (PEAFIELD)	5.18			11.7 2
<b>CO. DONEGAL</b>				
MALIN HEAD	5.28	104	37	12.6 18
BALLYSHANNON (CATHLEEN'S FALL)	4.43	93	31	11.4 2
<b>CO. DUBLIN</b>				
DUBLIN AIRPORT	5.55	106	40	12.8 18
CASEMENT AERODROME	5.55	113	40	12.1 19 20
<b>CO. GALWAY</b>				
GALWAY (UNIV. COLL.)	5.60	113	40	11.9 30
<b>CO. KERRY</b>				
VALENTIA OBSERVATORY	4.61	92	33	10.5 24
ARDFERT (LISCAHANE)	5.27		38	12.2 20
<b>CO. MAYO</b>				
BELMULLET	5.82	111	42	12.5 18
STRAIDE	5.10			12.1 18
KNOCK AIRPORT	4.49			11.6 2
<b>CO. OFFALY</b>				
BIRR	4.77	103	34	12.4 20
<b>CO. WATERFORD</b>				
DUNGARVAN (CARRIGLEA)	5.16	102	37	12.2 19
<b>CO. WEXFORD</b>				
JOHN F. KENNEDY PARK	5.34	108	38	12.0 18
CLONROCHE (KNOXTOWN)	5.27			11.6 19

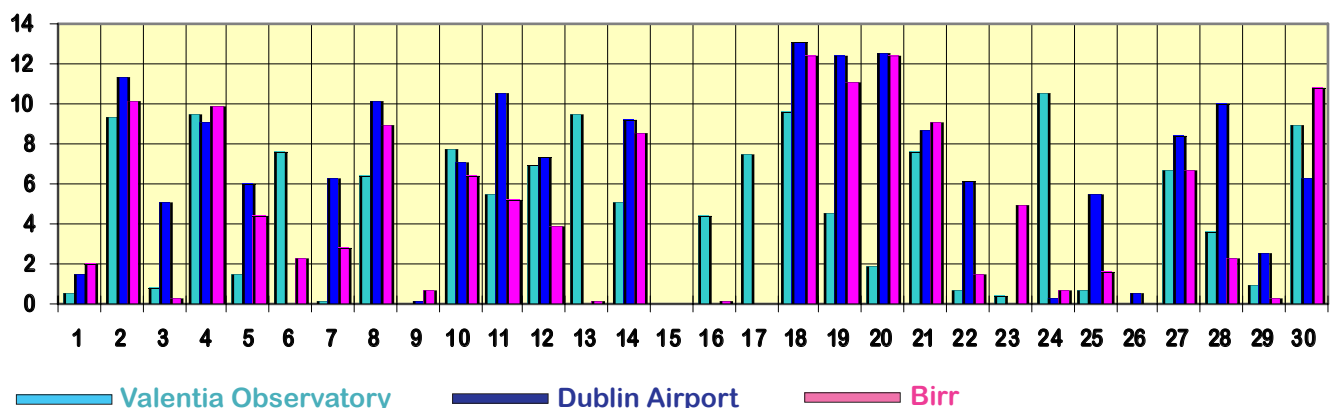
## Sunnier than normal in most areas

Sunshine totals for April were above normal generally, but it was a relatively dull month in southwestern and northwestern areas. Totals ranged from 133 hours at Ballyshannon (Cathleen's Fall), Co. Donegal, to 175 hours at Belmullet, with percentage of normal values between 92% at Valentia Observatory and 113% of normal at both Casement Aerodrome and Galway (University College).

Most sunshine was recorded during the second half of the month, particularly in the period 18th to 21st and on the 30th. Shannon Airport measured the highest daily value of the month, 13.6 hours on the 30th. Global solar radiation totals were below normal generally, ranging from 91% of normal at Birr to 105% at Belmullet.

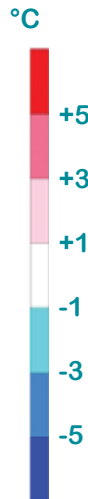
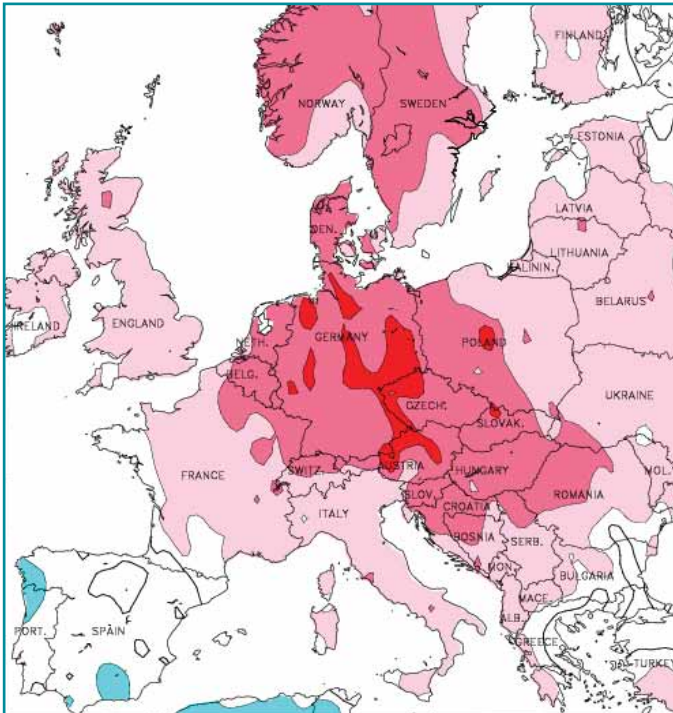
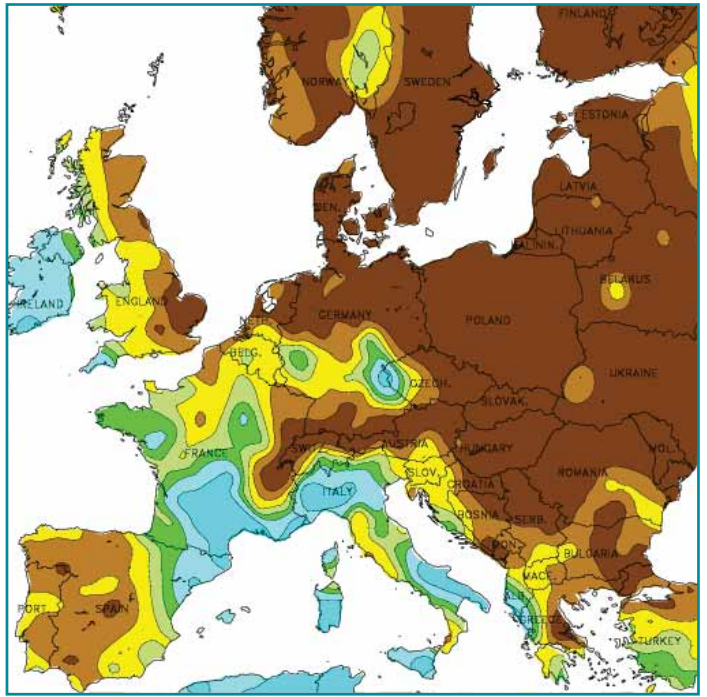


Daily sunshine values (hours)



Total Sunshine  
(difference from 1961-90 normals)

**APRIL RAINFALL**  
(percentage of 1961-1990 normal)



**APRIL MEAN TEMPERATURE**  
(difference from 1961-1990 normal)

Data supplied by NOAA  
Climate Prediction Centre,  
US Department of Commerce

Across the southern United States, a major outbreak of severe tornadoes occurred on the 9th/10th, with 112 tornadoes recorded, along with many reports of hail and wind damage. The violent weather claimed the lives of five people- three in Arkansas and two in Tennessee. The worst-hit area was the city of Mena, where an EF3 tornado killed three people and destroyed or damaged over 600 homes.

According to figures from the German Meteorological Office, the mean daily air temperature for April over the country was 11.8°C, 4.5° higher than normal, making this the warmest April in Germany since 1891. Rainfall was just less than half of normal, while sunshine duration was 63% higher than average.

Heavy rains that affected Zambia and Namibia since March continued during this month also. Torrential downpours prompted the overflow of rivers, flooded homes and cropland, and washed away roads. Nearly 700,000 people were affected in Zambia, while 344,000 people were affected in Namibia. The Zambezi River reached its highest level since 1969. Since the heavy rains began, 92 fatalities were reported across Namibia.

Floods described as a once-in-a-century deluge left thousands stranded or isolated on Australia's east coast. In Queensland, heavy rain and strong winds led to flash floods, blocking roads and causing widespread blackouts. Four areas were declared disaster zones, following 48-hour falls of 700mm in places.

An ice bridge linking the Wilkins Ice Shelf to two islands in Antarctica has broken away, raising the possibility of the shelf collapsing, and providing further evidence of rapid change in the region. Sited on the western side of the Antarctic Peninsula, the Wilkins shelf has been retreating since the 1990s. The removal of the ice bridge will allow ice to move more freely between Charcot and Latady islands, into the open ocean.

**Global weather highlights of the month**

