

National Parks and Wildlife Service

Conservation Objectives Series

Courtmacsherry Bay SPA 004219



An Roinn
Ealaíon, Oidhreachta agus Gaeltachta

Department of
Arts, Heritage and the Gaeltacht



**National Parks and Wildlife Service,
Department of Arts, Heritage and the Gaeltacht,**

7 Ely Place, Dublin 2, Ireland.

Web: www.npws.ie

E-mail: nature.conservation@ahg.gov.ie

Citation:

**NPWS (201) Conservation Objectives: Courtmacsherry Bay SPA 004219.
Version 1. National Parks and Wildlife Service, Department of Arts, Heritage
and the Gaeltacht.**

Series Editor: Rebecca Jeffrey

ISSN 2009-4086

The overall aim of the Habitats Directive is to maintain or restore the favourable conservation status of habitats and species of community interest. These habitats and species are listed in the Habitats and Birds Directives and Special Areas of Conservation and Special Protection Areas are designated to afford protection to the most vulnerable of them. These two designations are collectively known as the Natura 2000 network.

European and national legislation places a collective obligation on Ireland and its citizens to maintain habitats and species in the Natura 2000 network at favourable conservation condition. The Government and its agencies are responsible for the implementation and enforcement of regulations that will ensure the ecological integrity of these sites.

A site-specific conservation objective aims to define favourable conservation condition for a particular habitat or species at that site.

The maintenance of habitats and species within Natura 2000 sites at favourable conservation condition will contribute to the overall maintenance of favourable conservation status of those habitats and species at a national level.

Favourable conservation status of a habitat is achieved when:

- its natural range, and area it covers within that range, are stable or increasing, and
- the specific structure and functions which are necessary for its long-term maintenance exist and are likely to continue to exist for the foreseeable future, and
- the conservation status of its typical species is favourable.

The favourable conservation status of a species is achieved when:

- population dynamics data on the species concerned indicate that it is maintaining itself on a long-term basis as a viable component of its natural habitats, and
- the natural range of the species is neither being reduced nor is likely to be reduced for the foreseeable future, and
- there is, and will probably continue to be, a sufficiently large habitat to maintain its populations on a long-term basis.

Notes/Guidelines:

1. The targets given in these conservation objectives are based on best available information at the time of writing. As more information becomes available, targets for attributes may change. These will be updated periodically, as necessary.
2. An appropriate assessment based on these conservation objectives will remain valid even if the targets are subsequently updated, providing they were the most recent objectives available when the assessment was carried out. It is essential that the date and version are included when objectives are cited.
3. Assessments cannot consider an attribute in isolation from the others listed for that habitat or species, or for other habitats and species listed for that site. A plan or project with an apparently small impact on one attribute may have a significant impact on another.
4. Please note that the maps included in this document do not necessarily show the entire extent of the habitats and species for which the site is listed. This should be borne in mind when appropriate assessments are being carried out.
5. When using these objectives, it is essential that the relevant backing/supporting documents are consulted, particularly where instructed in the targets or notes for a particular attribute.

Qualifying Interests

* indicates a priority habitat under the Habitats Directive

004219	Courtmacsherry Bay SPA
A003	Great Northern Diver <i>Gavia immer</i>
A048	Shelduck <i>Tadorna tadorna</i>
A050	Wigeon <i>Anas penelope</i>
A069	Red-breasted Merganser <i>Mergus serrator</i>
A140	Golden Plover <i>Pluvialis apricaria</i>
A142	Lapwing <i>Vanellus vanellus</i>
A149	Dunlin <i>Calidris alpina alpina</i>
A156	Black-tailed Godwit <i>Limosa limosa</i>
A157	Bar-tailed Godwit <i>Limosa lapponica</i>
A160	Curlew <i>Numenius arquata</i>
A179	Black-headed Gull <i>Chroicocephalus ridibundus</i>
A182	Common Gull <i>Larus canus</i>
A999	Wetlands

Please note that this SPA overlaps with Courtmacsherry Estuary SAC (001230) and adjoins Seven Heads SPA (004191). See map 2. The conservation objectives for this site should be used in conjunction with those for overlapping and adjacent sites as appropriate.

Supporting documents, relevant reports & publications

Supporting documents, NPWS reports and publications are available for download from: www.npws.ie/Publications

NPWS Documents

Year : 2014
Title : Courtmacsherry Bay SPA (site code: 4219) Conservation objectives supporting document V1
Author : NPWS
Series : Conservation objectives supporting document

A003 Great Northern Diver *Gavia immer*

To maintain the favourable conservation condition of Great Northern Diver in Courtmacsherry Bay SPA, which is defined by the following list of attributes and targets:

Attribute	Measure	Target	Notes
Population trend	Percentage change	Long term population trend stable or increasing	Waterbird population trends are presented in part four of the conservation objectives supporting document
Distribution	Range, timing and intensity of use of areas	No significant decrease in the range, timing or intensity of use of areas by great northern diver, other than that occurring from natural patterns of variation	Waterbird distribution from the 2010/2011 waterbird survey programme is discussed in part five of the conservation objectives supporting document

A048 *Shelduck Tadorna tadorna*

To maintain the favourable conservation condition of Shelduck in Courtmacsherry Bay SPA, which is defined by the following list of attributes and targets:

Attribute	Measure	Target	Notes
Population trend	Percentage change	Long term population trend stable or increasing	Waterbird population trends are presented in part four of the conservation objectives supporting document
Distribution	Range, timing and intensity of use of areas	No significant decrease in the range, timing or intensity of use of areas by shelduck, other than that occurring from natural patterns of variation	Waterbird distribution from the 2010/2011 waterbird survey programme is discussed in part five of the conservation objectives supporting document

Conservation Objectives for : Courtmacsherry Bay SPA [004219]

A050 *Wigeon Anas penelope*

To maintain the favourable conservation condition of Wigeon in Courtmacsherry Bay SPA, which is defined by the following list of attributes and targets:

Attribute	Measure	Target	Notes
Population trend	Percentage change	Long term population trend stable or increasing	Waterbird population trends are presented in part four of the conservation objectives supporting document
Distribution	Range, timing and intensity of use of areas	No significant decrease in the range, timing or intensity of use of areas by wigeon, other than that occurring from natural patterns of variation	Waterbird distribution from the 2010/2011 waterbird survey programme is discussed in part five of the conservation objectives supporting document

Conservation Objectives for : Courtmacsherry Bay SPA [004219]

A069 Red-breasted Merganser *Mergus serrator*

To maintain the favourable conservation condition of Red-breasted Merganser in Courtmacsherry Bay SPA, which is defined by the following list of attributes and targets:

Attribute	Measure	Target	Notes
Population trend	Percentage change	Long term population trend stable or increasing	Waterbird population trends are presented in part four of the conservation objectives supporting document
Distribution	Range, timing and intensity of use of areas	No significant decrease in the range, timing or intensity of use of areas by red-breasted merganser, other than that occurring from natural patterns of variation	Waterbird distribution from the 2010/2011 waterbird survey programme is discussed in part five of the conservation objectives supporting document

Conservation Objectives for : Courtmacsherry Bay SPA [004219]

A140 Golden Plover *Pluvialis apricaria*

To maintain the favourable conservation condition of Golden Plover in Courtmacsherry Bay SPA, which is defined by the following list of attributes and targets:

Attribute	Measure	Target	Notes
Population trend	Percentage change	Long term population trend stable or increasing	Population trends are presented in part four of the conservation objectives supporting document
Distribution	Range, timing and intensity of use of areas	No significant decrease in the range, timing or intensity of use of areas by golden plover, other than that occurring from natural patterns of variation	Waterbird distribution from the 2010/2011 waterbird survey programme is discussed in part five of the conservation objectives supporting document

A142 **Lapwing *Vanellus vanellus***

To maintain the favourable conservation condition of Lapwing in Courtmacsherry Bay SPA, which is defined by the following list of attributes and targets:

Attribute	Measure	Target	Notes
Population trend	Percentage change	Long term population trend stable or increasing	Waterbird population trends are presented in part four of the conservation objectives supporting document
Distribution	Range, timing and intensity of use of areas	No significant decrease in the range, timing or intensity of use of areas by lapwing, other than that occurring from natural patterns of variation	Waterbird distribution from the 2010/2011 waterbird survey programme is discussed in part five of the conservation objectives supporting document

A149 **Dunlin *Calidris alpina alpina***

To maintain the favourable conservation condition of Dunlin in Courtmacsherry Bay SPA, which is defined by the following list of attributes and targets:

Attribute	Measure	Target	Notes
Population trend	Percentage change	Long term population trend stable or increasing	Population trends are presented in part four of the conservation objectives supporting document
Distribution	Range, timing and intensity of use of areas	No significant decrease in the range, timing or intensity of use of areas by dunlin, other than that occurring from natural patterns of variation	Waterbird distribution from the 2010/2011 waterbird survey programme is discussed in part five of the conservation objectives supporting document

A156 **Black-tailed Godwit *Limosa limosa***

To maintain the favourable conservation condition of Black-tailed Godwit in Courtmacsherry Bay SPA, which is defined by the following list of attributes and targets:

Attribute	Measure	Target	Notes
Population trend	Percentage change	Long term population trend stable or increasing	Population trends are presented in part four of the conservation objectives supporting document
Distribution	Range, timing and intensity of use of areas	No significant decrease in the range, timing or intensity of use of areas by black-tailed godwit, other than that occurring from natural patterns of variation	Waterbird distribution from the 2010/2011 waterbird survey programme is discussed in part five of the conservation objectives supporting document

A157 Bar-tailed Godwit *Limosa lapponica*

To maintain the favourable conservation condition of Bar-tailed Godwit in Courtmacsherry Bay SPA, which is defined by the following list of attributes and targets:

Attribute	Measure	Target	Notes
Population trend	Percentage change	Long term population trend stable or increasing	Population trends are presented in part four of the conservation objectives supporting document
Distribution	Range, timing and intensity of use of areas	No significant decrease in the range, timing or intensity of use of areas by bar-tailed godwit, other than that occurring from natural patterns of variation	Waterbird distribution from the 2010/2011 waterbird survey programme is discussed in part five of the conservation objectives supporting document

A160 **Curlew *Numenius arquata***

To maintain the favourable conservation condition of Curlew in Courtmacsherry Bay SPA, which is defined by the following list of attributes and targets:

Attribute	Measure	Target	Notes
Population trend	Percentage change	Long term population trend stable or increasing	Population trends are presented in part four of the conservation objectives supporting document
Distribution	Range, timing and intensity of use of areas	No significant decrease in the range, timing or intensity of use of areas by curlew, other than that occurring from natural patterns of variation	Waterbird distribution from the 2010/2011 waterbird survey programme is discussed in part five of the conservation objectives supporting document

Conservation Objectives for : Courtmacsherry Bay SPA [004219]

A179 Black-headed Gull *Chroicocephalus ridibundus*

To maintain the favourable conservation condition of Black-headed Gull in Courtmacsherry Bay SPA, which is defined by the following list of attributes and targets:

Attribute	Measure	Target	Notes
Population trend	Percentage change	Long term population trend stable or increasing	Waterbird population trends are presented in part four of the conservation objectives supporting document
Distribution	Range, timing and intensity of use of areas	No significant decrease in the range, timing or intensity of use of areas by black-headed gull other than that occurring from natural patterns of variation	Waterbird distribution from the 2010/2011 waterbird survey programme is discussed in part five of the conservation objectives supporting document

A182 Common Gull *Larus canus*

To maintain the favourable conservation condition of Common Gull in Courtmacsherry Bay SPA, which is defined by the following list of attributes and targets:

Attribute	Measure	Target	Notes
Population trend	Percentage change	Long term population trend stable or increasing	Population trends are presented in part four of the conservation objectives supporting document
Distribution	Range, timing and intensity of use of areas	No significant decrease in the range, timing or intensity of use of areas by common gull, other than that occurring from natural patterns of variation	Waterbird distribution from the 2010/2011 waterbird survey programme is discussed in part five of the conservation objectives supporting document


A999 Wetlands

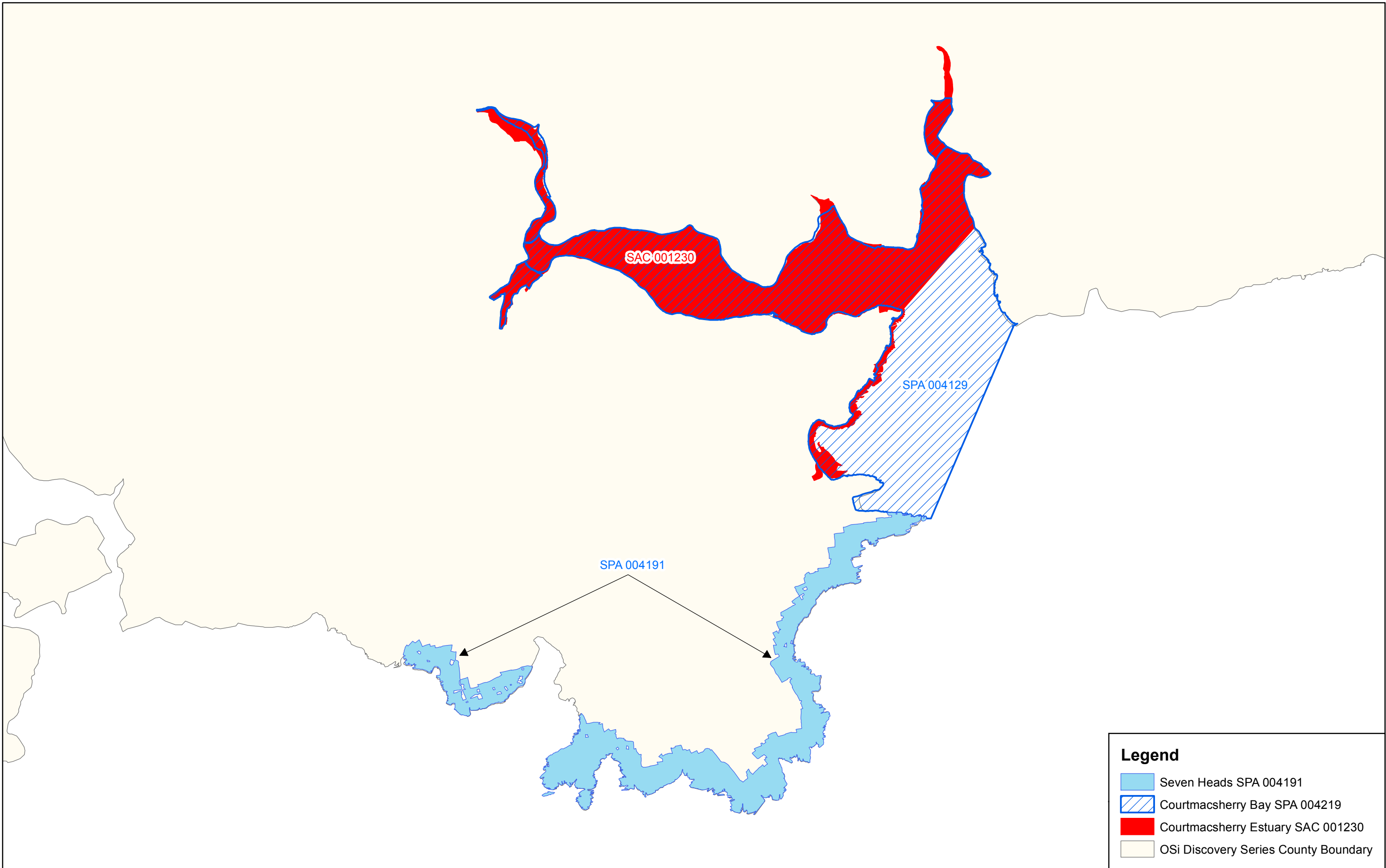
To maintain the favourable conservation condition of the wetland habitat in Courtmacsherry Bay SPA as a resource for the regularly occurring migratory waterbirds that utilise it. This is defined by the following attribute and target:

Attribute	Measure	Target	Notes
Habitat area	Hectares	The permanent area occupied by the wetland habitat should be stable and not significantly less than the area of 1,299 hectares, other than that occurring from natural patterns of variation	The wetland habitat area was estimated as 1,299ha using OSi data and relevant orthophotographs. For further information see part three of the conservation objectives supporting document



Legend

 Courtmacsherry Bay SPA 004219



Legend

- Seven Heads SPA 004191
- Courtmacsherry Bay SPA 004219
- Courtmacsherry Estuary SAC 001230
- OSi Discovery Series County Boundary