

EM😊JI - MUSIC

For solo piano and emoticon story telling.

by Brendan Breslin

EM🤗JI - MUSIC

For solo piano and emoticon story telling.

by Brendan Breslin

Meet Mr Emoji- the character that will lead you through the music!

Through his simple yet affective stories, performers can help describe his journey, feelings and surrounds through the use of music.

Try to best capture Mr Emoji's stories by playing what's written, writing your own, and expanding the story!

NOTES:

The following scores are designed as a fun guide to exploring the piano using stories told through emoticons, through the eyes of Mr Emoji.

The emoticons are designed to signify people, places, objects and feelings.

Where notes are provided the player is expected to play as written.

Where example notes are provided the player is expected to try various possibilities themselves.

Where general instructions are provided the player is expected to try various possibilities themselves.

These last two points mean some composing for the player as well- try and find music that imitates the story best, but avoid using any popular references to the exact music of films, t.v., shows etc.

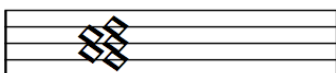
PERFORMING OPTIONS:

Play the music only- test your performing/composing ability, play for friends and family and see what they think the story is about after playing.

Play the music whilst reciting the story lines between musical inserts- play the story and tell the story yourself, or have a friend/family member do the talking.

Play the music, give the listener(s) the story insert provided- let people read the story for themselves as you play the music.

Play the music, let the listeners watch the live video- let people watch the animated video as you play the music.



= Play any notes in general area of keyboard,
as appropriate to the story requirements

EM😊JI - MUSIC

“ I HEAR YOU BARKING . . . ”

(AUDIENCE SHEET)



Mr Emoji . . .



was walking home . . .



when he got a sudden shock . . .



by a large dog!



Mr Emoji . . .



doesn't like dogs. . .



he loves cats . . .



especially when they purr!



He thinks cats are cool!



Mr Emoji . . .



ran as fast as he could . . .



all the way home!

EM🤪JI - MUSIC

“ I HEAR YOU BARKING . . . ” (PERFORMER SCORE)



Mr Emoji . . .

Quick & quirky- Mr Emoji theme tune

mp

A musical score for a piano piece. It consists of two staves: a treble clef staff on top and a bass clef staff on the bottom. The music is written in a key with one flat (B-flat major or D minor) and a 4/4 time signature. The tempo is marked 'Quick & quirky'. The dynamic is marked 'mp' (mezzo-piano). The score includes various note values, rests, and articulation marks like slurs and accents.



was walking home . . .

Walking tempo- hand palms down on keyboard

A musical score for a piano piece. It consists of two staves: a treble clef staff on top and a bass clef staff on the bottom. The music is written in a key with one flat (B-flat major or D minor) and a 4/4 time signature. The tempo is marked 'Walking tempo'. The dynamic is marked 'mp'. The score includes various note values, rests, and articulation marks like slurs and accents.



when he got a sudden shock . . .

Press as many notes as possible with arms

fff

A musical score for a piano piece. It consists of two staves: a treble clef staff on top and a bass clef staff on the bottom. The music is written in a key with one flat (B-flat major or D minor) and a 4/4 time signature. The tempo is marked 'Walking tempo'. The dynamic is marked 'fff' (fortissimo). The score includes various note values, rests, and articulation marks like slurs and accents.



by a large dog!

Like a barking dog

Musical score for 'Like a barking dog' in bass clef, 2/4 time. The piece features a series of chords and eighth notes with accents. Dynamics include *mf* and *f*. There are trills and triplets. A dashed line at the bottom is labeled '8th'.



Mr Emoji . . .

Quick & quirky

Musical score for 'Mr Emoji' in 3/4 time. The piece is characterized by triplets and a lively, quirky feel. Dynamics range from *mp* to *f*.



doesn't like dogs. . .

Sadly

rit.

Musical score for 'doesn't like dogs' in 4/4 time. The piece is slow and sad, featuring a triplet and a ritardando section. Dynamics include *p*, *mf*, and *p*.



he loves cats . . .

Cat 'Meow'

Musical notation for 'Cat Meow' in G major, 4/4 time. The melody consists of three identical phrases. Each phrase starts with a half-note G4, followed by a dotted quarter note G4, a quarter note A4, and a quarter note B4. The notes G4, A4, and B4 are beamed together and have a slur above them. The melody is repeated three times, each starting with a mezzo-piano (*mp*) dynamic marking.



especially when they purr!

Cat 'Purr'

Musical notation for 'Cat Purr' in bass clef. It features a tremolo trill (tr) on the G2 string, indicated by a wavy line above the staff. The notes G2, F2, and E2 are beamed together and have a slur above them. The dynamics are marked *pp* (pianissimo) and *15^{mb}* (15 mezzo-basso).



He thinks cats are cool!

Cool

Musical notation for 'Cool' in G major, 4/4 time. The melody is in the treble clef, starting with a half-note G4, followed by a dotted quarter note G4, a quarter note A4, and a quarter note B4. The notes G4, A4, and B4 are beamed together and have a slur above them. The melody is repeated three times, each starting with a forte (*f*) dynamic marking.



Mr Emoji . . .

Quick & quirky

A musical score for 'Mr. Emoji' consisting of two staves. The top staff is in treble clef and the bottom staff is in bass clef. The music is characterized by a 'Quick & quirky' tempo. It begins with a forte (*f*) dynamic. The melody in the treble clef features a sequence of notes: G4, A4, Bb4, C5, D5, E5, F#5, G5, A5, B5, C6, D6, E6, F#6, G6, A6, B6, C7. The bass line starts with a low octave G2, followed by a treble clef staff with notes G4, A4, Bb4, C5, D5, E5, F#5, G5, A5, B5, C6, D6, E6, F#6, G6, A6, B6, C7. The piece concludes with a fermata over the final notes.



ran as fast as he could . . .

Running tempo- hand palms down on keyboard

A diagram illustrating hand positions for a 'Running tempo' exercise. It shows two staves, one for the right hand (R) and one for the left hand (L). The right hand is positioned on the upper staff, and the left hand is on the lower staff. The diagram shows a sequence of chords: R-L, R-L, R-L, R-L, R-L, R-L, R-L, R-L. Each chord is represented by a diamond shape with internal lines, indicating the specific notes being played. The exercise is designed to be performed with 'hand palms down on keyboard'.



all the way home!

Soft and content

rall. . .

A musical score for 'all the way home!' consisting of two staves. The top staff is in treble clef and the bottom staff is in bass clef. The music is characterized by a 'Soft and content' tempo and a 'rall.' (rallentando) marking. It begins with a pianissimo (*pp*) dynamic. The melody in the treble clef features a sequence of notes: G4, A4, Bb4, C5, D5, E5, F#5, G5, A5, B5, C6, D6, E6, F#6, G6, A6, B6, C7. The bass line starts with a low octave G2, followed by a treble clef staff with notes G4, A4, Bb4, C5, D5, E5, F#5, G5, A5, B5, C6, D6, E6, F#6, G6, A6, B6, C7. The piece concludes with a fermata over the final notes. Dynamics include *sub p*, *mf*, and *p*.

THE END