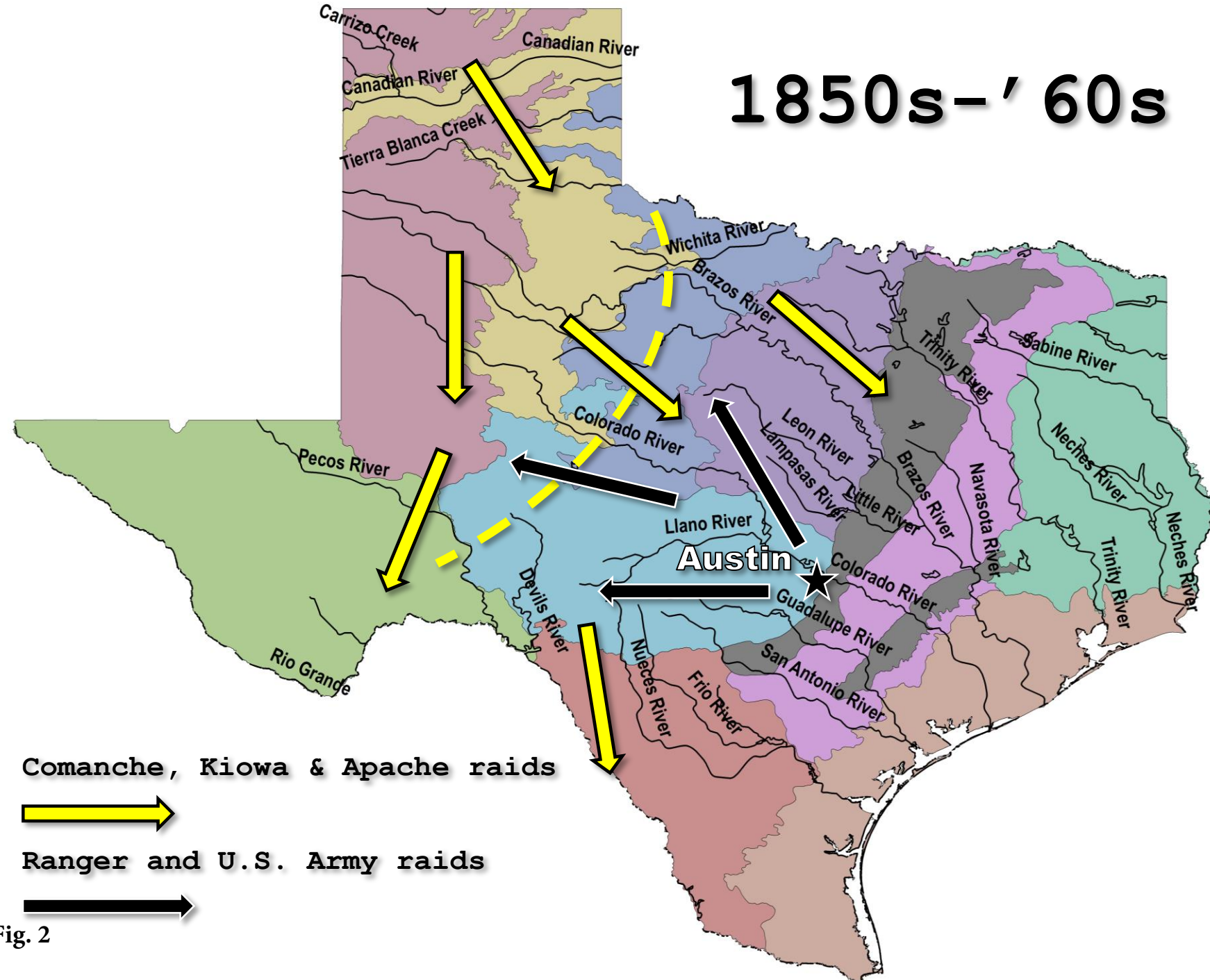
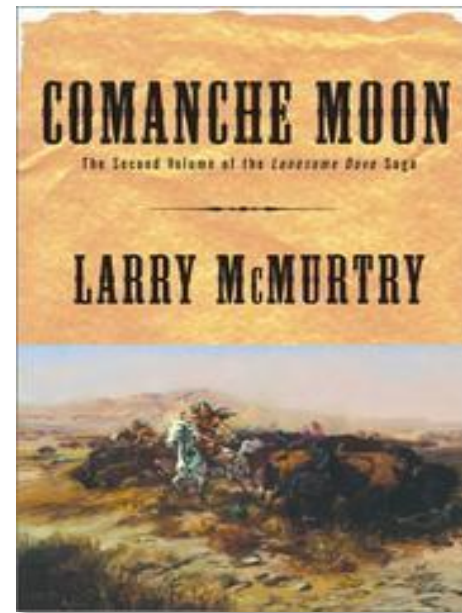




Fig 1.

# 1850s-'60s



## Eco-Regions

- Central Great Plains
- Chihuahuan Deserts
- Cross Timbers
- East Central Texas Plains
- Edwards Plateau
- High Plains
- South Central Plains
- Southern Texas Plains
- Southwestern Tablelands
- Texas Blackland Prairies
- Western Gulf Coastal Plain

Comanche, Kiowa & Apache raids



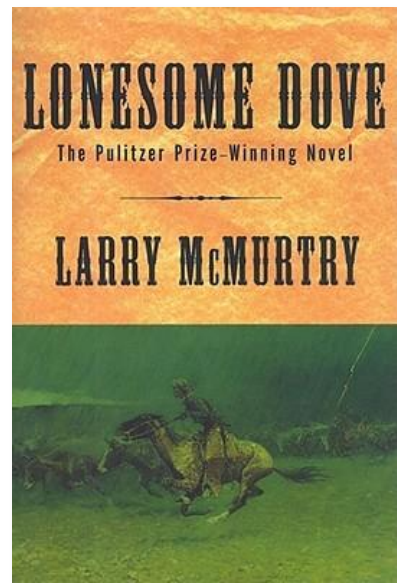
Ranger and U.S. Army raids



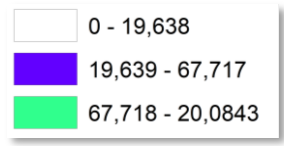
Fig. 2



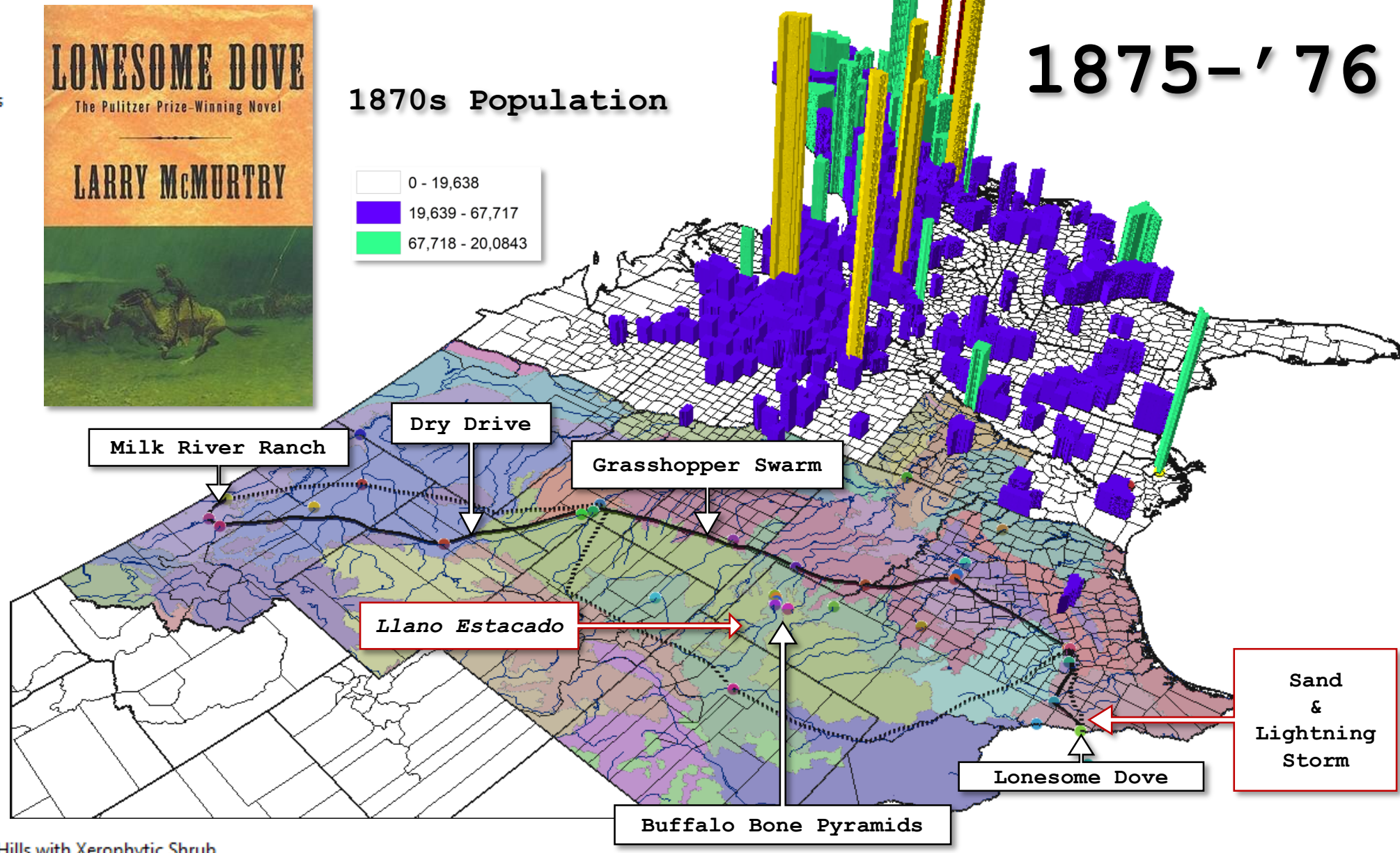
- Arizona/New Mexico Mountains
- Arizona/New Mexico Plateau
- Arkansas Valley
- Aspen Parkland/Northern Glaciated Plains
- Boston Mountains
- Canadian Rockies
- Central Great Plains
- Central Irregular Plains
- Chihuahuan Desert
- Colorado Plateaus
- Columbia Mountains/Northern Rockies
- Cross Timbers
- East Central Texas Plains
- Edwards Plateau
- Flint Hills
- High Plains
- Idaho Batholith
- Lake Manitoba and Lake Agassiz Plain
- Madrean Archipelago
- Middle Rockies
- Mississippi Alluvial Plain
- Mississippi Valley Loess Plains
- Nebraska Sand Hills
- Northwestern Glaciated Plains
- Northwestern Great Plains
- Ouachita Mountains
- Ozark Highlands
- Snake River Plain
- South Central Plains
- Southern Rockies
- Southern Texas Plains/Interior Plains and Hills with Xerophytic Shrub
- Southwestern Tablelands
- Texas Blackland Prairies
- Wasatch and Uinta Mountains
- Western Corn Belt Plains
- Western Gulf Coastal Plain



## 1870s Population



# 1875-'76



**Cattle Drive to Montana Territory** —————

**Return to Lonesome Dove** .....

Fig. 3



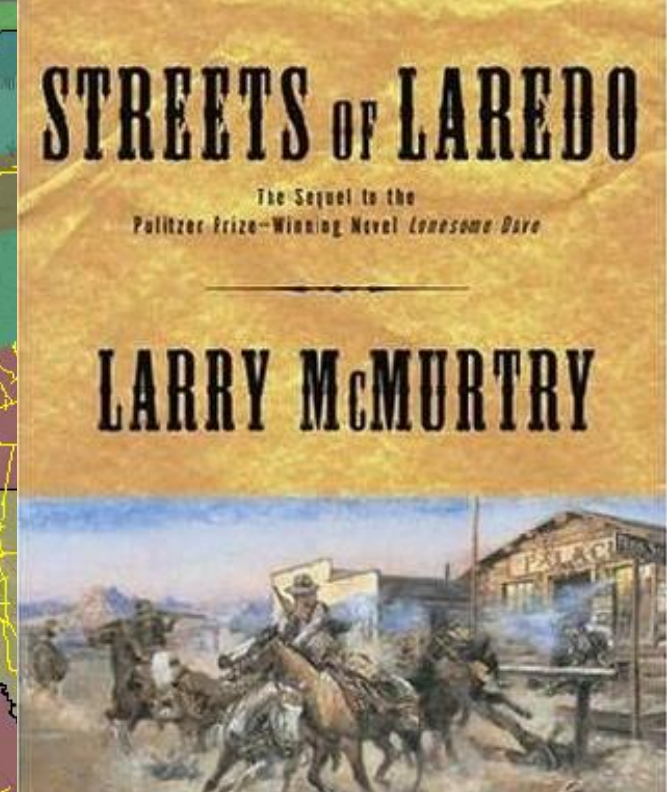
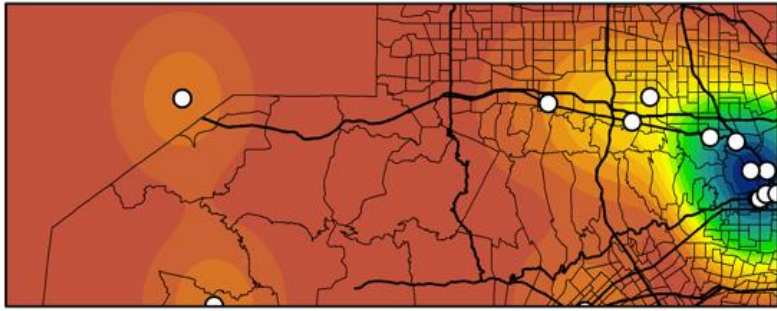


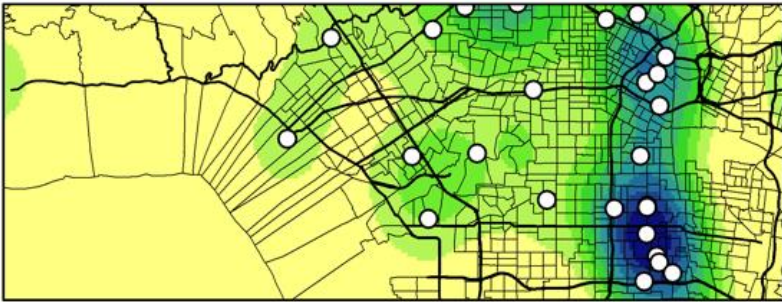
Fig. 4



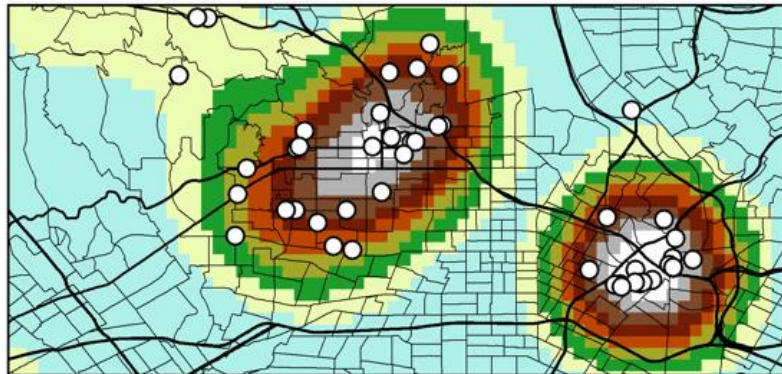
# L.A. Noirscales



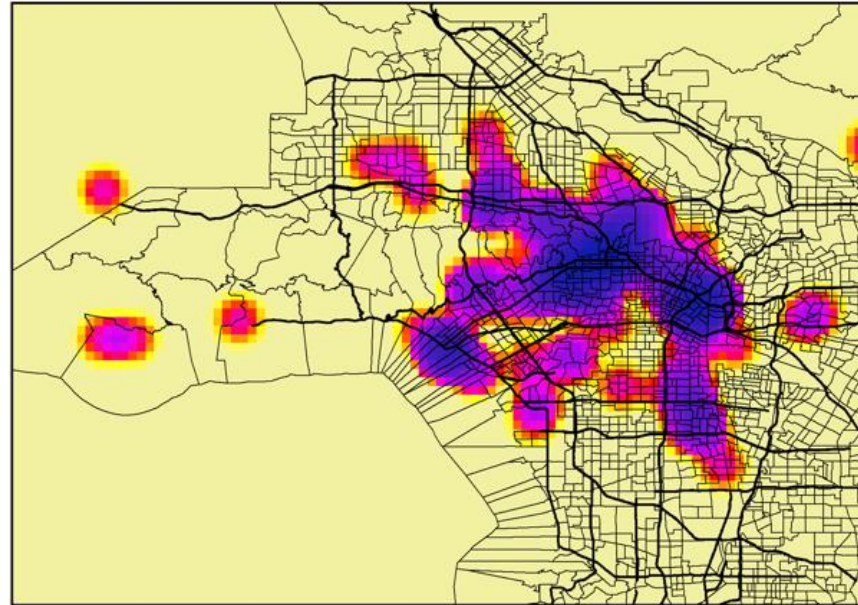
Sunset Blvd. to Malibu drive  
Raymond Chandler 'The Little Sister' (1949)



Coordinates of Segregation  
Walter Mosley 'Devil in a Blue Dress' (1990)



LAPD Siege Clusters  
Michael Connelly 'The Black Echo' (1990)



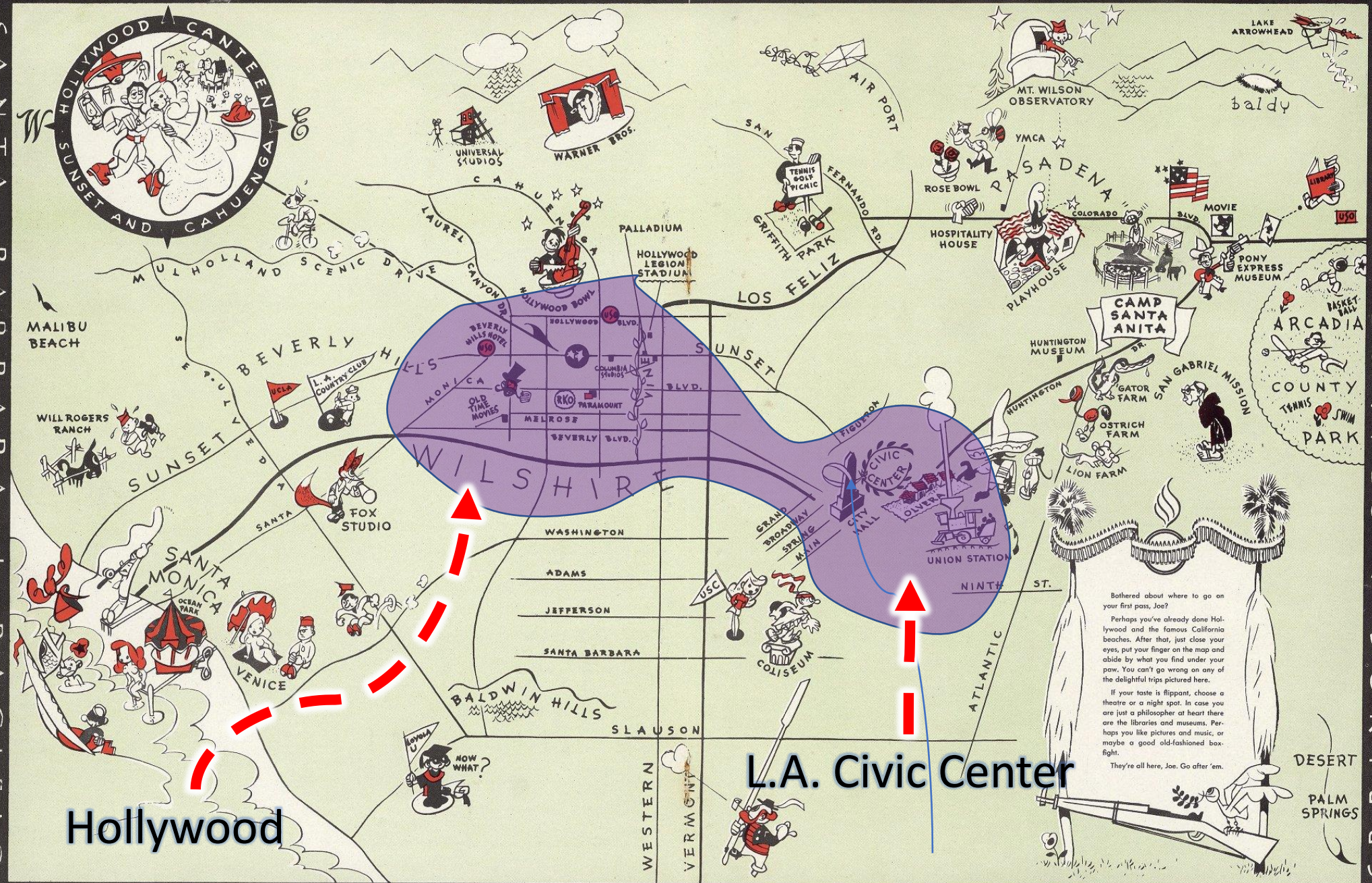
Aggregated Locations



L.A. Dantean Cartography  
Michael Nava 'The Burning Plain' (1997)

Fig. 5





Hollywood

L.A. Civic Center

Bothered about where to go on your first pass, Joe?

Perhaps you've already done Hollywood and the famous California beaches. After that, just close your eyes, put your finger on the map and abide by what you find under your paw. You can't go wrong on any of the delightful trips pictured here.

If your taste is flippant, choose a theatre or a night spot. In case you are just a philosopher at heart there are the libraries and museums. Perhaps you like pictures and music, or maybe a good old-fashioned box-fight.

They're all here, Joe. Go after 'em.

Fig. 6



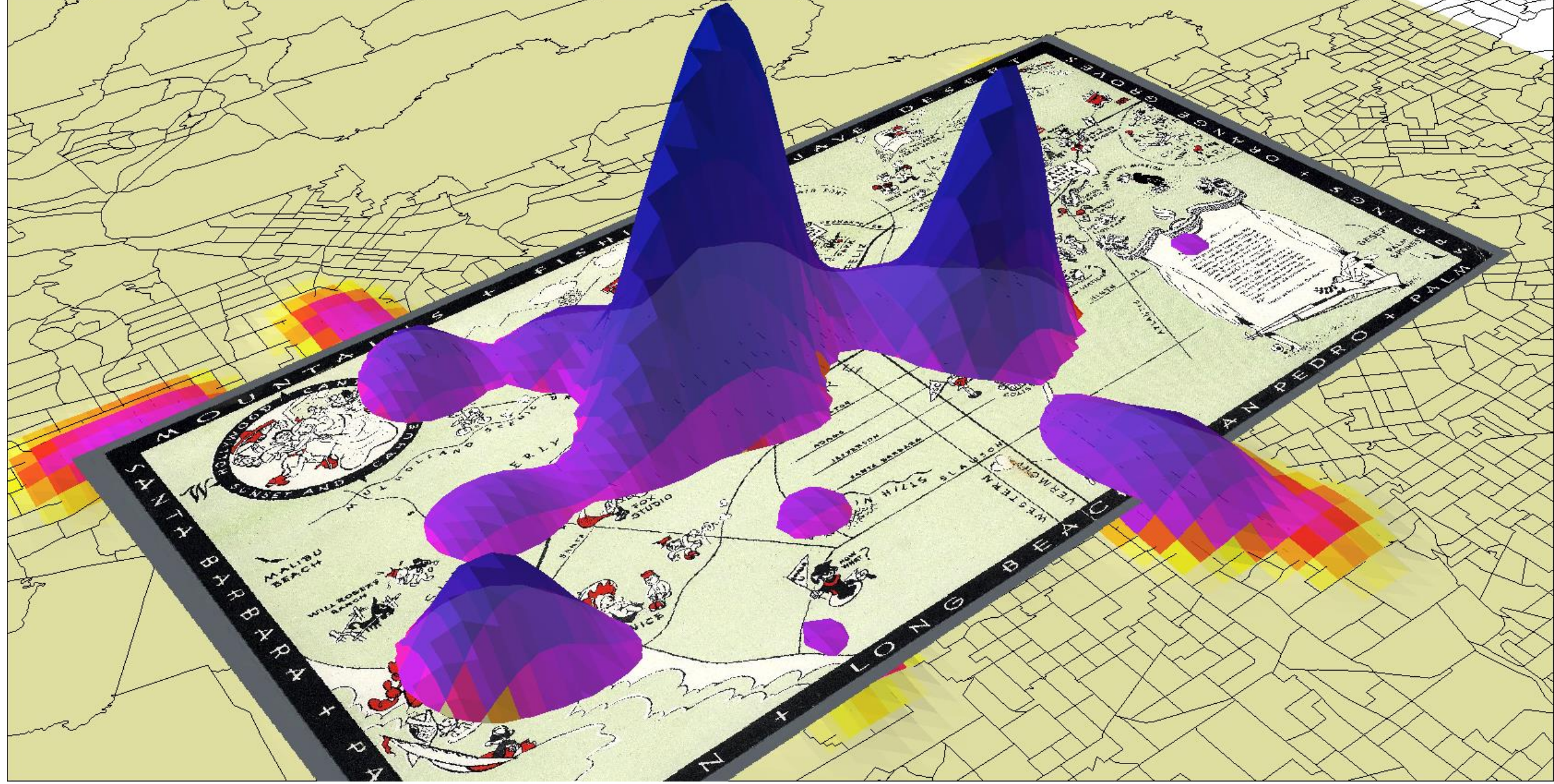


Fig. 7