

# National Parks and Wildlife Service

## *Conservation Objectives Series*

### Vale of Clara (Rathdrum Wood) SAC 000733



An Roinn Tithíochta,  
Rialtais Áitiúil agus Oidhreachta  
Department of Housing,  
Local Government and Heritage

**National Parks and Wildlife Service,  
Department of Housing, Local Government and Heritage,  
90 King Street North, Dublin 7, D07 N7CV, Ireland.  
Web: [www.npws.ie](http://www.npws.ie)  
E-mail: [nature.conservation@chg.gov.ie](mailto:nature.conservation@chg.gov.ie)**

**Citation:**

**NPWS (2021) Conservation Objectives: Vale of Clara (Rathdrum Wood) SAC  
000733. Version 1. National Parks and Wildlife Service, Department of Housing,  
Local Government and Heritage.**

**Series Editor: Rebecca Jeffrey  
ISSN 2009-4086**

## Introduction

The overall aim of the Habitats Directive is to maintain or restore the favourable conservation status of habitats and species of community interest. These habitats and species are listed in the Habitats and Birds Directives and Special Areas of Conservation and Special Protection Areas are designated to afford protection to the most vulnerable of them. These two designations are collectively known as the Natura 2000 network.

European and national legislation places a collective obligation on Ireland and its citizens to maintain habitats and species in the Natura 2000 network at favourable conservation condition. The Government and its agencies are responsible for the implementation and enforcement of regulations that will ensure the ecological integrity of these sites.

A site-specific conservation objective aims to define favourable conservation condition for a particular habitat or species at that site.

The maintenance of habitats and species within Natura 2000 sites at favourable conservation condition will contribute to the overall maintenance of favourable conservation status of those habitats and species at a national level.

Favourable conservation status of a habitat is achieved when:

- its natural range, and area it covers within that range, are stable or increasing, and
- the specific structure and functions which are necessary for its long-term maintenance exist and are likely to continue to exist for the foreseeable future, and
- the conservation status of its typical species is favourable.

The favourable conservation status of a species is achieved when:

- population dynamics data on the species concerned indicate that it is maintaining itself on a long-term basis as a viable component of its natural habitats, and
- the natural range of the species is neither being reduced nor is likely to be reduced for the foreseeable future, and
- there is, and will probably continue to be, a sufficiently large habitat to maintain its populations on a long-term basis.

### Notes/Guidelines:

1. The targets given in these conservation objectives are based on best available information at the time of writing. As more information becomes available, targets for attributes may change. These will be updated periodically, as necessary.
2. An appropriate assessment based on these conservation objectives will remain valid even if the targets are subsequently updated, providing they were the most recent objectives available when the assessment was carried out. It is essential that the date and version are included when objectives are cited.
3. Assessments cannot consider an attribute in isolation from the others listed for that habitat or species, or for other habitats and species listed for that site. A plan or project with an apparently small impact on one attribute may have a significant impact on another.
4. Please note that the maps included in this document do not necessarily show the entire extent of the habitats and species for which the site is listed. This should be borne in mind when appropriate assessments are being carried out.
5. When using these objectives, it is essential that the relevant backing/supporting documents are consulted, particularly where instructed in the targets or notes for a particular attribute.

## Qualifying Interests

*\* indicates a priority habitat under the Habitats Directive*

---

000733      Vale of Clara (Rathdrum Wood) SAC

---

91A0      Old sessile oak woods with *Ilex* and *Blechnum* in the British Isles

## Supporting documents, relevant reports & publications

Supporting documents, NPWS reports and publications are available for download from: [www.npws.ie/Publications](http://www.npws.ie/Publications)

### NPWS Documents

<b>Year :</b>	2008
<b>Title :</b>	National survey of native woodlands 2003-2008
<b>Author :</b>	Perrin, P.M.; Martin, J.; Barron, S.; O'Neill, F.H.; McNutt, K.E.; Delaney, A.
<b>Series :</b>	Unpublished report to NPWS
<b>Year :</b>	2010
<b>Title :</b>	A provisional inventory of ancient and long-established woodland in Ireland
<b>Author :</b>	Perrin, P.M.; Daly, O.H.
<b>Series :</b>	Irish Wildlife Manuals, No. 46
<b>Year :</b>	2013
<b>Title :</b>	Results of a monitoring survey of old sessile oak woods and alluvial forests
<b>Author :</b>	O'Neill, F.H.; Barron, S.J.
<b>Series :</b>	Irish Wildlife Manuals, No. 71
<b>Year :</b>	2016
<b>Title :</b>	Ireland Red List No. 10: Vascular Plants
<b>Author :</b>	Wyse Jackson, M.; FitzPatrick, Ú.; Cole, E.; Jebb, M.; McFerran, D.; Sheehy Skeffington, M.; Wright, M.
<b>Series :</b>	Ireland Red List Series, NPWS
<b>Year :</b>	in prep.
<b>Title :</b>	The monitoring and assessment of four EU Habitats Directive Annex I woodland habitats
<b>Author :</b>	Daly, O.H.; O'Neill, F.H.; Barron, S.J.
<b>Series :</b>	Irish Wildlife Manuals

### Other References

<b>Year :</b>	2000
<b>Title :</b>	Ecological survey of Ballygannon Wood, Rathdrum, Co. Wicklow for the Millennium Forest Project
<b>Author :</b>	Wann, J.
<b>Series :</b>	Report submitted to Coillte and Woodlands of Ireland
<b>Year :</b>	2002
<b>Title :</b>	Reversing the habitat fragmentation of British woodlands
<b>Author :</b>	Peterken, G.
<b>Series :</b>	WWF-UK, London
<b>Year :</b>	2016
<b>Title :</b>	Irish Vegetation Classification: Technical Progress Report No. 2
<b>Author :</b>	Perrin, P.
<b>Series :</b>	Report submitted to National Biodiversity Data Centre

## Spatial data sources

**Year :** Revision 2010  
**Title :** National Survey of Native Woodlands 2003-2008. Version 1  
**GIS Operations :** QI selected; clipped to SAC boundary. Expert opinion used as necessary to resolve any issues arising  
**Used For :** 91A0 (map 2)

---

**Year :** 2020  
**Title :** Coillte Biodiversity Dataset (2001-2005)  
**GIS Operations :** Dataset clipped to SAC boundary; QI selected. Expert opinion used as necessary to resolve any issues arising  
**Used For :** 91A0 (map 2)

---

## Conservation Objectives for : Vale of Clara (Rathdrum Wood) SAC [000733]

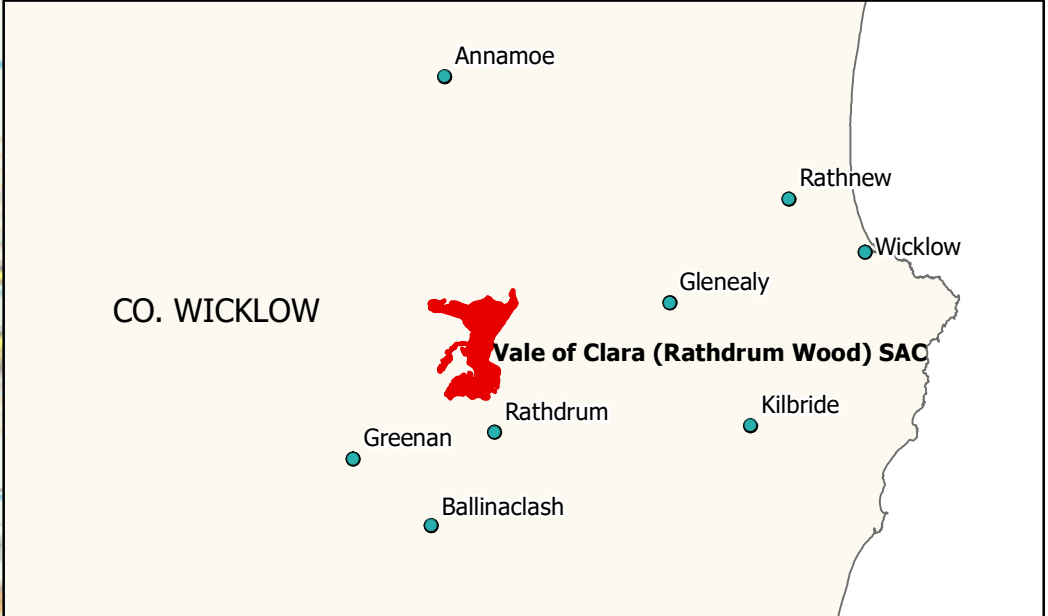
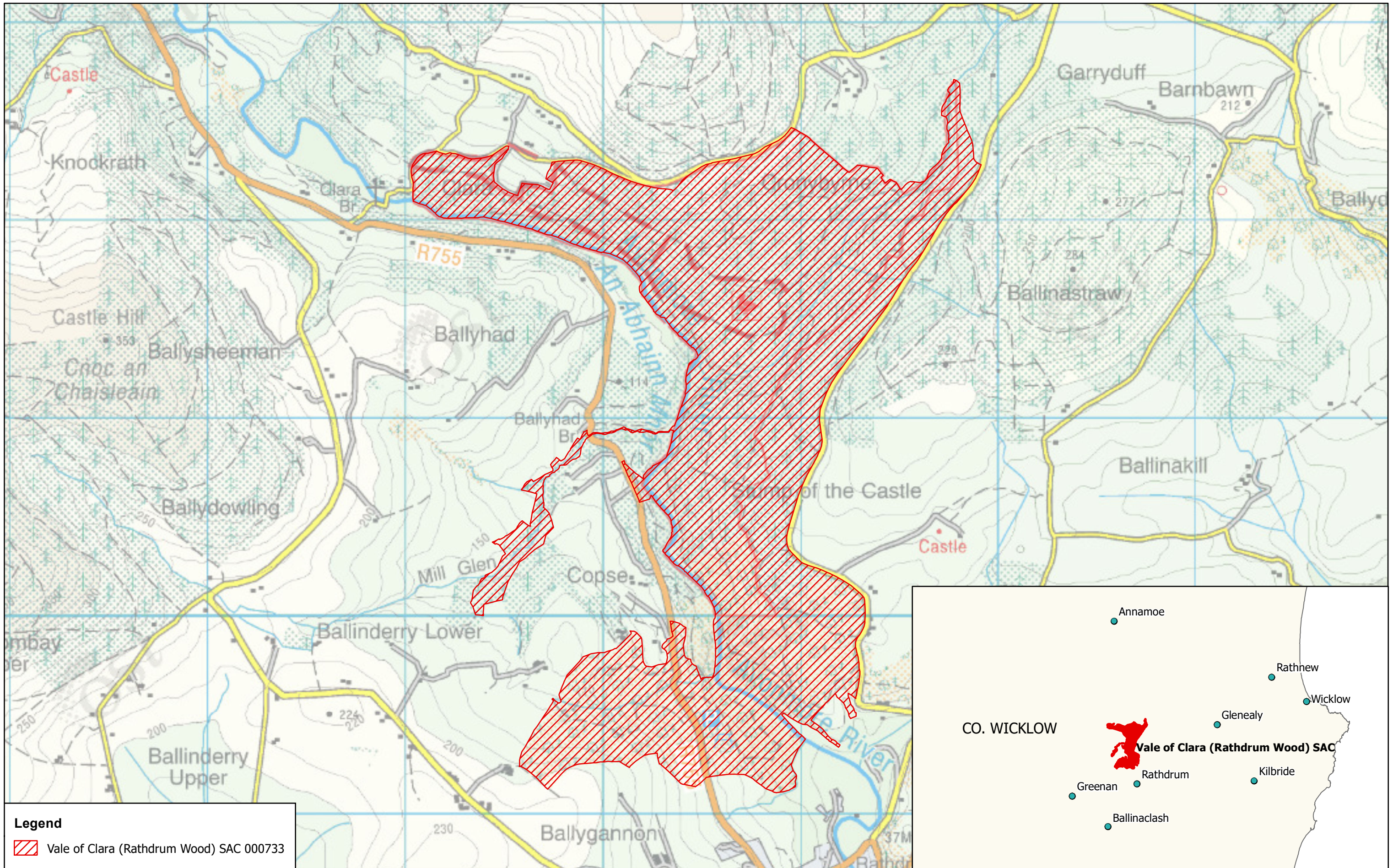
### 91A0 Old sessile oak woods with *Ilex* and *Blechnum* in the British Isles


To restore the favourable conservation condition of Old sessile oak woods with *Ilex* and *Blechnum* in the British Isles in Vale of Clara (Rathdrum Wood) SAC, which is defined by the following list of attributes and targets:

Attribute	Measure	Target	Notes
Habitat area	Hectares	Area stable or increasing, subject to natural processes. See map 2	Old sessile oak woods with <i>Ilex</i> and <i>Blechnum</i> in the British Isles is present at Vale of Clara (Rathdrum Wood) SAC. The SAC is predominantly state-owned and the majority of the SAC is also protected as a Nature Reserve. Vale of Clara (Rathdrum Wood) SAC comprises one of the largest stands of native woodland in Ireland (NPWS internal files). As part of the National Survey of Native Woodlands (NSNW), Vale of Clara (NSNW site code 338) was partially surveyed by Perrin et al. (2008). Vale of Clara (code 338) was also included in national monitoring surveys (O'Neill and Barron, 2013; Daly et al., in prep.). Map 2 shows the area within the SAC which was classified as old sessile oak woodland (45.7ha) by Perrin et al. (2008). Old sessile oak woods are also present at Ballygannon, at the southern end of the SAC (Wann, 2000). It is important to note that further areas of woodland within the SAC may contain 91A0
Habitat distribution	Occurrence	No decline, subject to natural processes. The surveyed woodland areas are shown on map 2	Distribution based on Perrin et al. (2008) and the Coillte Biodiversity Dataset (2001-2005)
Woodland size	Hectares	Area stable or increasing. Where topographically possible, "large" woods at least 25ha in size and "small" woods at least 3ha in size	The target areas for individual woodlands aim to reduce habitat fragmentation and benefit those species requiring 'deep' woodland conditions (Peterken, 2002). In some cases, topographical constraints may restrict expansion. Vale of Clara SAC encompasses one of the largest stands of native woodland in Ireland (NPWS internal files)
Woodland structure: cover and height	Percentage; metres; centimetres	Total canopy cover at least 30%; median canopy height at least 11m; native shrub layer cover 10-75%; native herb/dwarf shrub layer cover at least 20% and height at least 20 cm; bryophyte cover at least 4%	The target aims for a diverse structure with a relatively closed canopy containing mature trees; subcanopy layer with semi-mature trees and shrubs; and well-developed herb layer and ground layer. Assessment criteria are described in Daly et al. (in prep.) and O'Neill and Barron (2013)
Woodland structure: community diversity and extent	Hectares	Maintain diversity and extent of community types	Described in Perrin et al. (2008). See also the Irish Vegetation Classification (Perrin, 2016; <a href="http://www.biodiversityireland.ie/projects/national-vegetation-database/irish-vegetation-classification">www.biodiversityireland.ie/projects/national-vegetation-database/irish-vegetation-classification</a> )
Woodland structure: natural regeneration	Seedling: sapling: pole ratio	Seedlings, saplings and pole age-classes of target species for 91A0 woodlands and other native tree species occur in adequate proportions to ensure survival of woodland canopy	The target species for 91A0 are sessile oak ( <i>Quercus petraea</i> ) and the hybrid oak <i>Quercus x rosacea</i> . Assessment criteria are described in Daly et al. (in prep.) and O'Neill and Barron (2013)
Woodland structure: dead wood	Number per hectare	At least 19 stems/ha of dead wood of at least 20cm diameter	Dead wood is a valuable resource and an integral part of a healthy, functioning woodland ecosystem. Dead wood comprises old senescent trees, standing dead trees, fallen dead wood (including large branches) and rotten stumps of any species. Assessment criteria are described in Daly et al. (in prep.) and O'Neill and Barron (2013)

Woodland structure: veteran trees	Number per hectare	No decline	Veteran trees are important habitats for bryophytes, lichens, saproxylic organisms, and some bird species. Their retention is important to ensure continuity of habitats/niches and propagule sources
Woodland structure: indicators of local distinctiveness	Occurrence; population size	No decline in distribution and, in the case of red listed and other rare or localised species, population size	Includes ancient or long-established woodlands (see Perrin and Daly, 2010), archaeological and geological features as well as red listed and other rare or localised species. Almost all of the woodland within the SAC has been identified as Ancient Woodland or Long-Established Woodland (I) by Perrin and Daly (2010). Several rare Myxomycete fungi have been recorded from the site (NPWS internal files). The Near-threatened ivy-leaved bellflower ( <i>Wahlenbergia hederacea</i> ) and the Vulnerable narrow-leaved helleborine ( <i>Cephalanthera longifolia</i> ) have been recorded from the site (NPWS internal files; Wyse Jackson et al., 2016). The latter is also listed on the Flora (Protection) Order, 2015. The Vale of Clara SAC is a good example of the relatively dry, acid oakwoods of eastern Ireland
Woodland structure: indicators of overgrazing	Occurrence	All four indicators of overgrazing absent	There are four indicators of overgrazing within 91A0: topiary effect on shrubs and young trees, browse line on mature trees, abundant dung, and severe recent bark stripping (Daly et al., 2020 in prep.; O'Neill and Barron, 2013). Overgrazing by deer was recorded by Daly et al. (2020)
Vegetation composition: native tree cover	Percentage	No decline. Native tree cover at least 90% of canopy; target species cover at least 50% of canopy	The target species for 91A0 are sessile oak ( <i>Quercus petraea</i> ) and the hybrid oak <i>Quercus x rosacea</i> (Daly et al., in prep.; O'Neill and Barron, 2013)
Vegetation composition: typical species	Occurrence	At least 1 target species for 91A0 woodlands present; at least 6 positive indicator species for 91A0 woodlands present	A variety of typical native species should be present, depending on woodland type. The target species for 91A0 are sessile oak ( <i>Quercus petraea</i> ) and the hybrid oak <i>Quercus x rosacea</i> . Positive indicator species for 91A0 are listed in Daly et al. (in prep.) and O'Neill and Barron (2013)
Vegetation composition: negative indicator species	Occurrence	Negative indicator species cover not greater than 10%; regeneration of negative indicator species absent	Negative indicator species (i.e. any non-native species, including herbaceous species such as montbretia ( <i>Crocsmia x crocosmiiflora</i> ) should be absent or under control. In the twentieth century, much of the site was underplanted with conifers. Although conservation management projects have been undertaken within the Vale of Clara SAC by NPWS and Coillte (NPWS internal files; Wann, 2000), invasive non-native trees remain an issue in parts of the site (Daly et al., in prep.)







**Legend**  
 Vale of Clara (Rathdrum Wood) SAC 000733

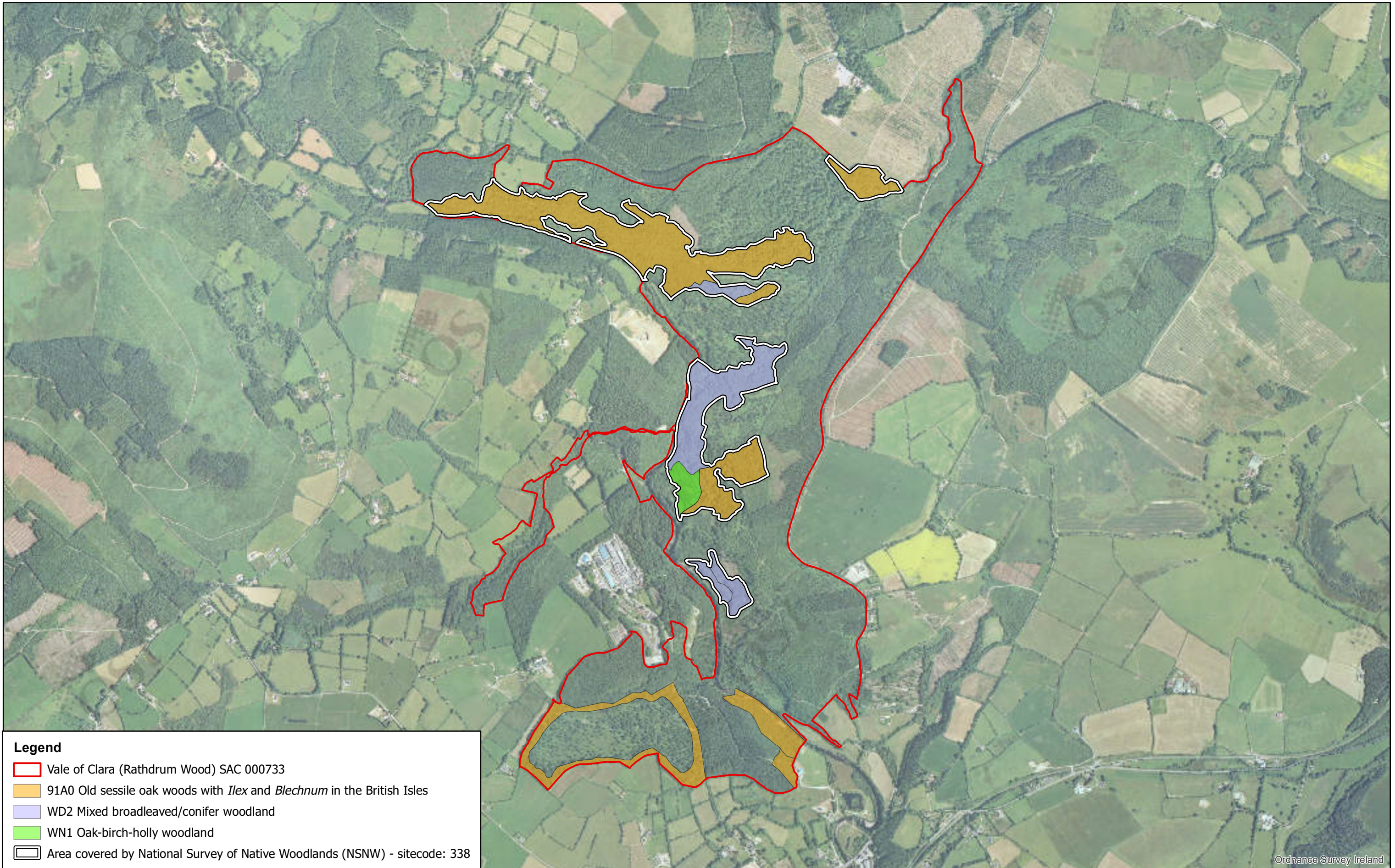
 **An Roinn Tithíochta, Rialtais Áitiúil agus Oidhreacht**  
 Department of Housing, Local Government and Heritage

**MAP 1:  
 VALE OF CLARA (RATHDRUM WOOD) SAC  
 CONSERVATION OBJECTIVES  
 SAC DESIGNATION**  
 Map to be read in conjunction with the NPWS Conservation Objectives Document

**SITE CODE:  
 SAC 000733; version 3.01. CO. WICKLOW**  
 0 125 250 500 Metres  


The mapped boundaries are of an indicative and general nature only. Boundaries of designated areas are subject to revision.  
 Ordnance Survey of Ireland Licence No OSI-NMA-014. © Ordnance Survey of Ireland Government of Ireland  
 Níl sna teorainneacha ar na léarscáilleana ach nod garshuíomhach ginearálta. Féadfar athbheithnithe a déanamh ar theorainneacha na gceantar comharthaith. Suirbhéarachta Ordonáis na hÉireann Ceadúnas Uimh OSI-NMA-014. © Suirbhéarachta Ordonáis na hÉireann Rialtas na hÉireann

  
**Date: October 2020**



**Legend**

- Vale of Clara (Rathdrum Wood) SAC 000733
- 91A0 Old sessile oak woods with *Ilex* and *Blechnum* in the British Isles
- WD2 Mixed broadleaved/conifer woodland
- WN1 Oak-birch-holly woodland
- Area covered by National Survey of Native Woodlands (NSNW) - sitecode: 338

Ordnance Survey Ireland

