



An Roinn Sláinte
Department of Health



Coronavirus
COVID-19
Public Health
Advice

Public Opinion Tracking Research: 06/09/21

VACCINE MODULE



ABOUT THE RESEARCH

The research findings in this report are based on surveys by **Amárach Research** on behalf of the Department of Health.

The polls are conducted and reported on the same day using Amárach's SmartPoll panel and weighted to the demographics of the 18+ adult population.

Sample size (06/09/21): n=1,600

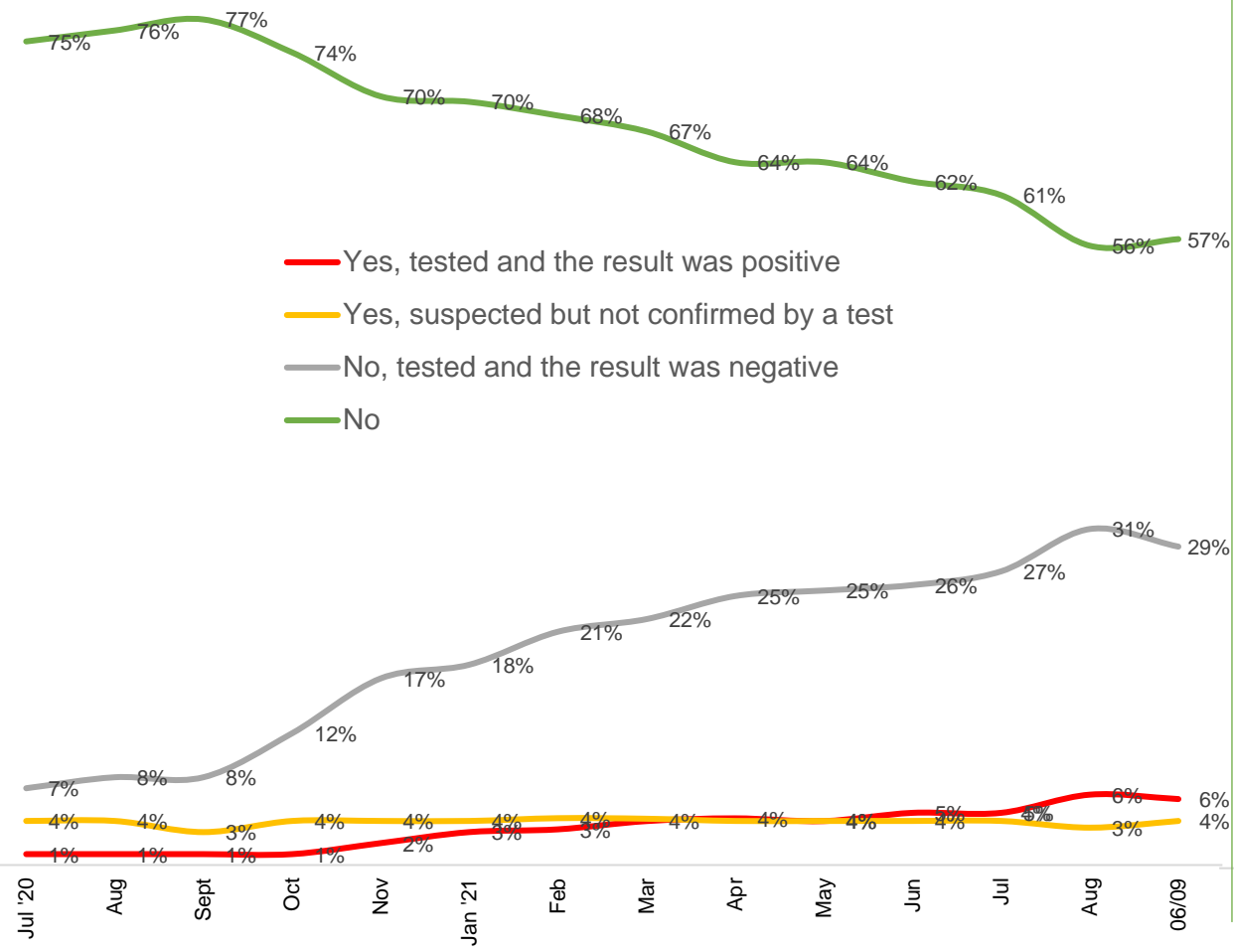


Module: Vaccines



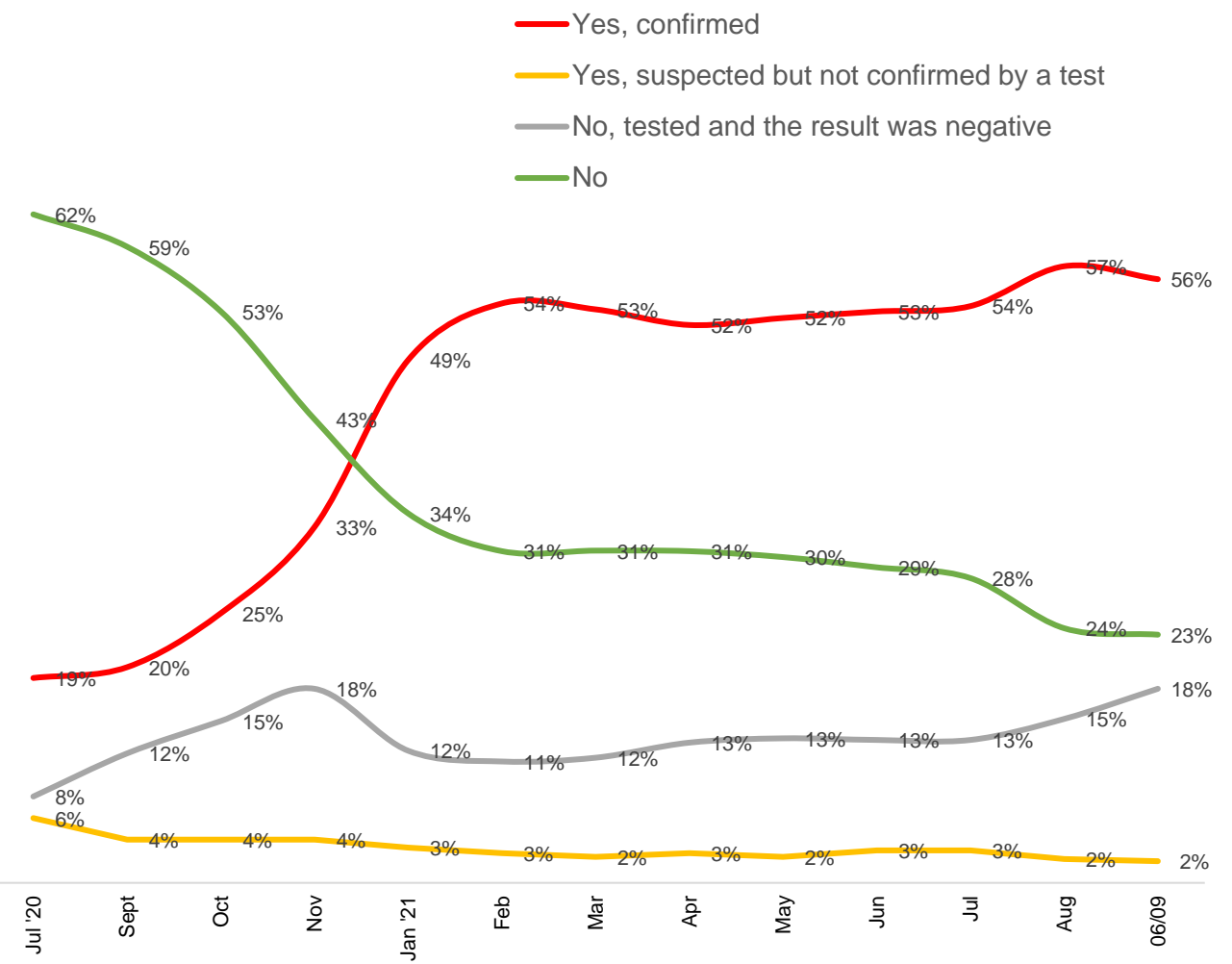
COVID-19 Infection – I

Are you, or have you been, infected with the coronavirus?



COVID-19 Infection – II

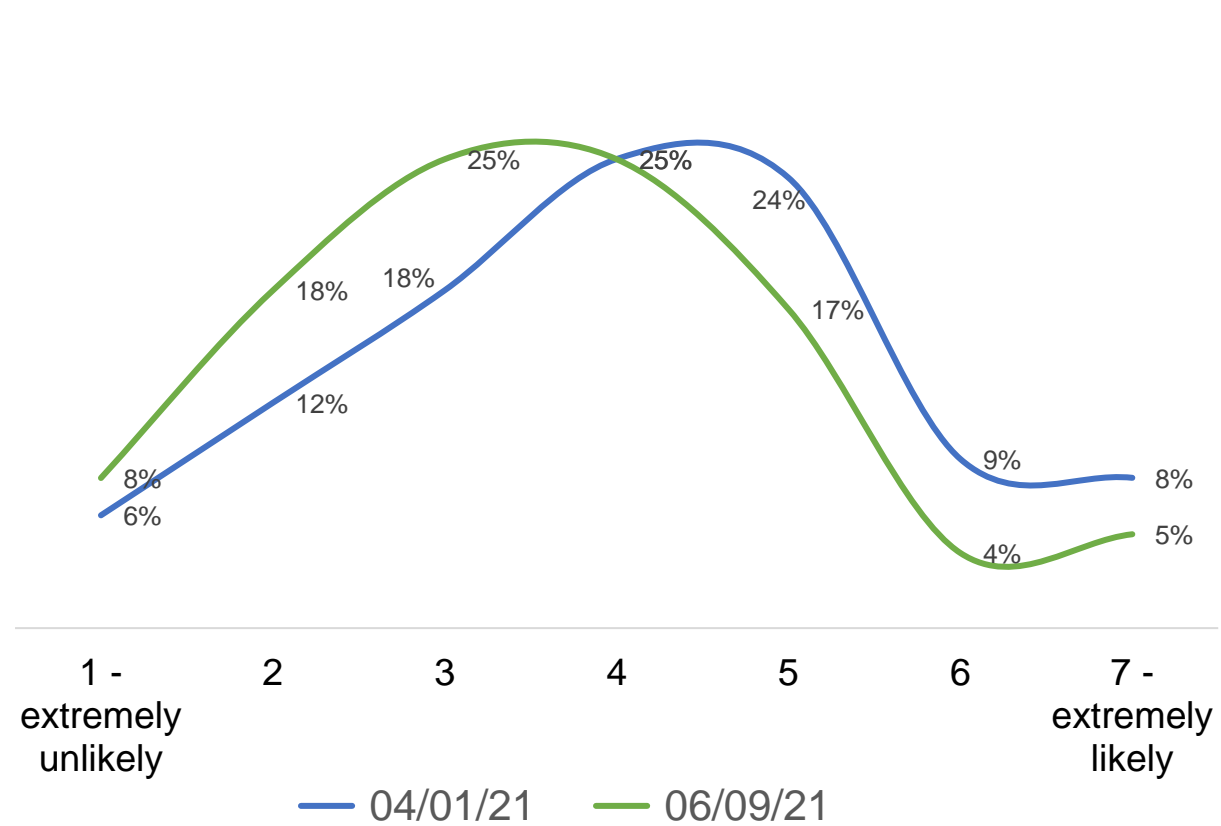
Do you know people in your immediate social environment who are or have been infected with the coronavirus?





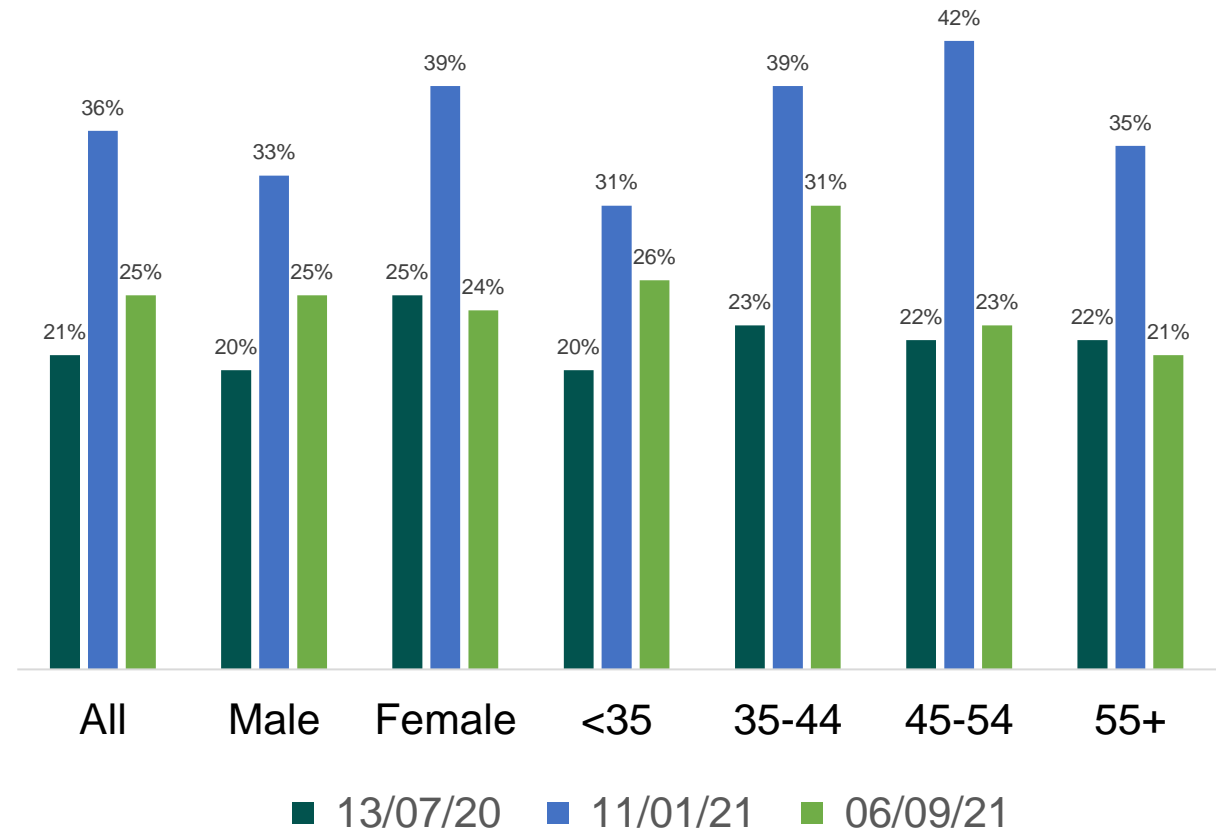
Infection Probability – I

What do you consider to be your own probability of getting infected with the coronavirus? Scale of 1 - 7



Infection Probability – II

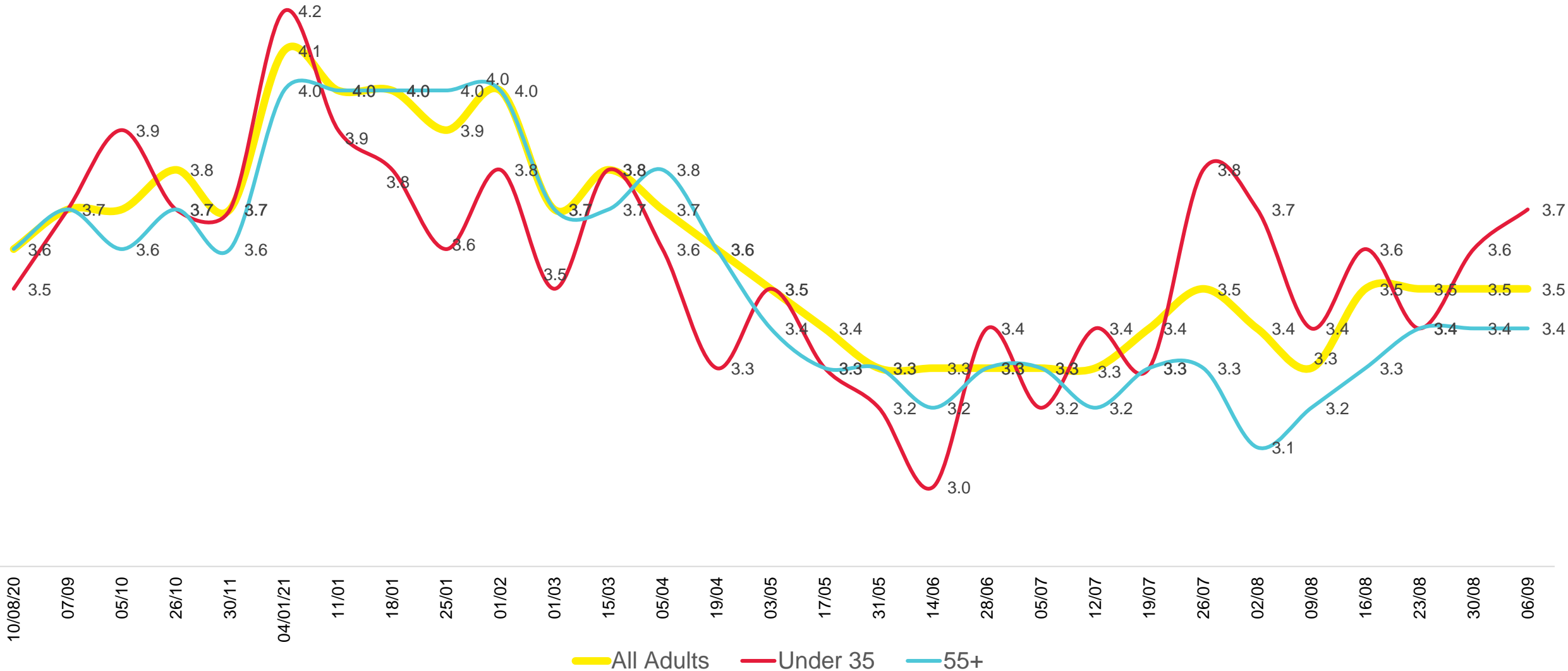
Demographics: % 5-7 – likely





Infection Probability – III

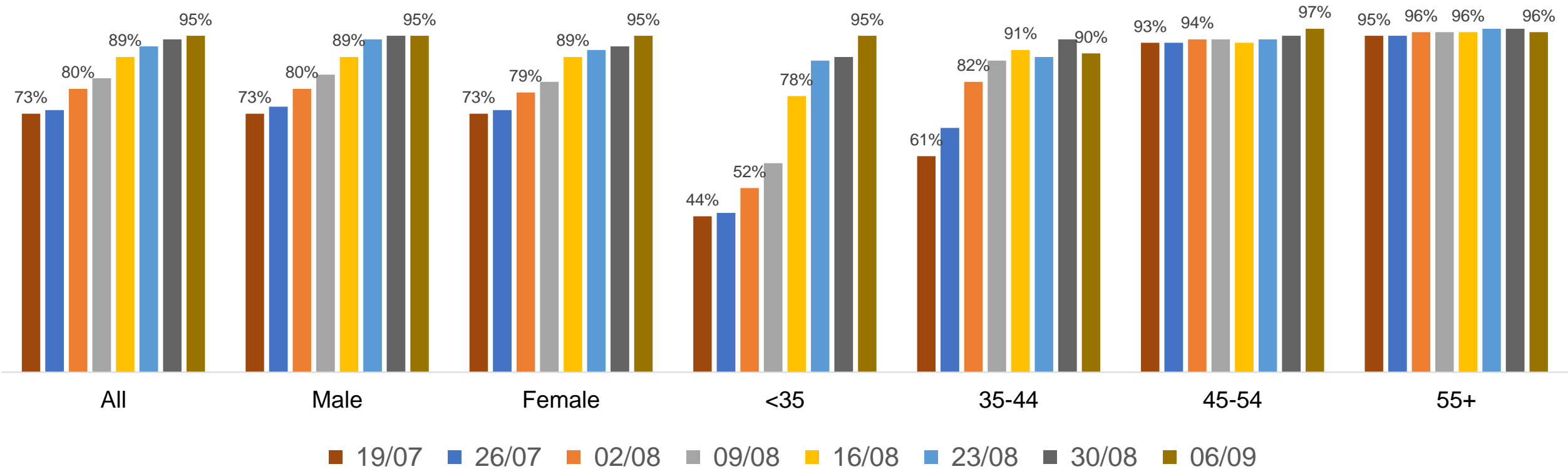
What do you consider to be your own probability of getting infected with the coronavirus?
Scale of 1-7: Mean Scores





COVID-19 Vaccine

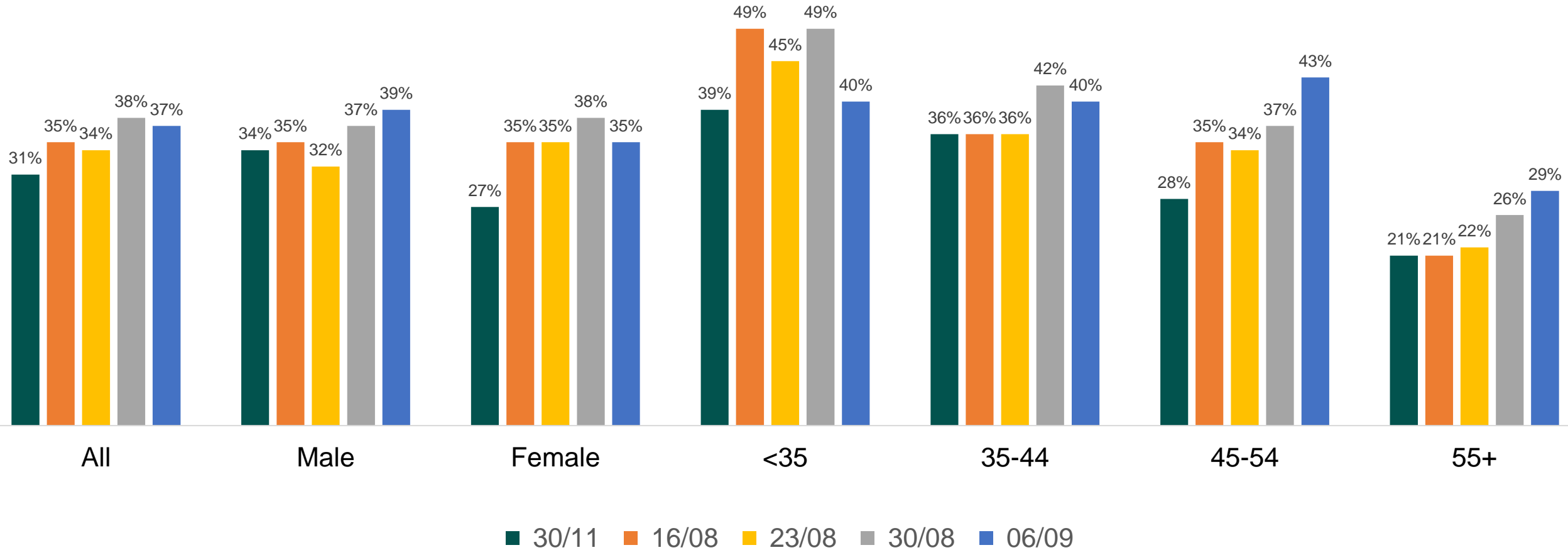
Are you fully vaccinated yet i.e. received two doses of AstraZeneca or Pfizer or Moderna or one dose of Jansen or J&J? Demographics: % Yes





COVID-19 Vaccine Restrictions

Once people start getting the COVID-19 vaccine in Ireland should the Government lift covid-related restrictions for everyone, including those who have not been vaccinated yet?(all adults): % YES





COVID-19 Vaccine – Trust

Who do you trust when it comes to advice about vaccines? Base All Adults – select all that apply:

